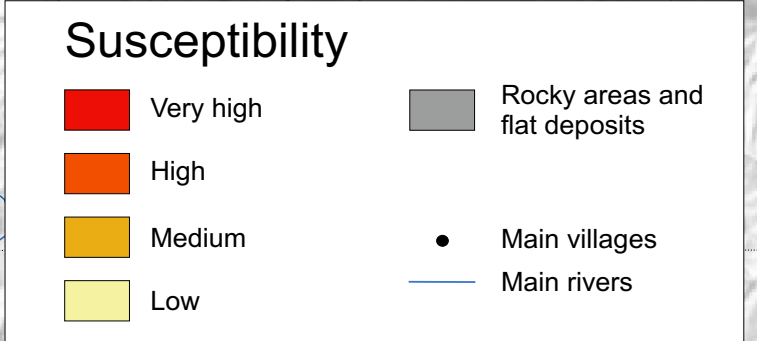
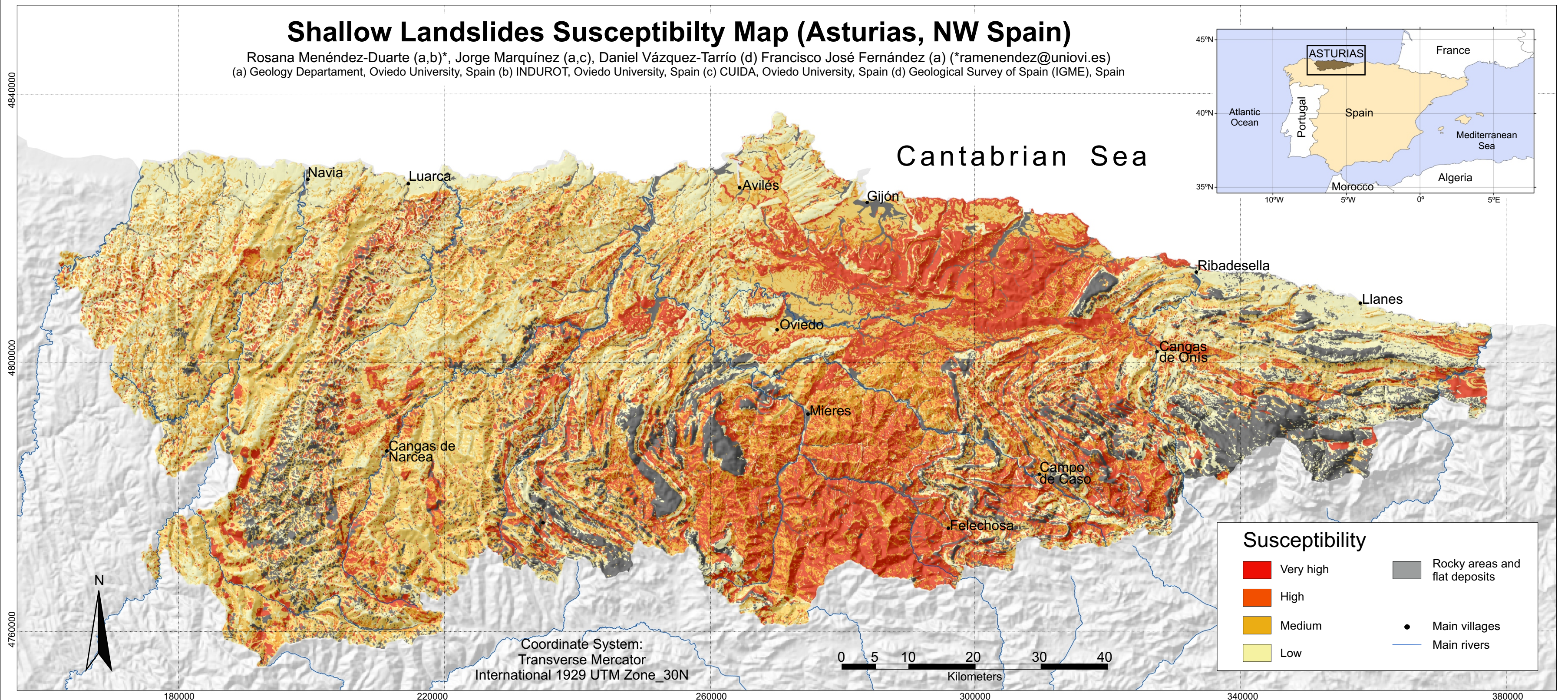


Shallow Landslides Susceptibility Map (Asturias, NW Spain)

Rosana Menéndez-Duarte (a,b)*, Jorge Marquínez (a,c), Daniel Vázquez-Tarrió (d) Francisco José Fernández (a) (*ramenendez@uniovi.es)
 (a) Geology Department, Oviedo University, Spain (b) INDUROT, Oviedo University, Spain (c) CUIDA, Oviedo University, Spain (d) Geological Survey of Spain (IGME), Spain



Shallow Landslide Susceptibility Mapping was constructed by combining geological/geomorphological maps and slope model. The attached figures show these maps for a small area located on the map of Asturias (red dot).

