



RESEARCH ARTICLE

Ship-to-ship dialogues and agreements for collision risk reduction

Reyes Poo Argüelles,¹ Jesús A. García Maza,^{2*} Felipe Mateos Martín,¹ and Marlene Bartolomé²

¹Electrical, Electronic, Computers and Systems Engineering Department, University of Oviedo, Oviedo, Spain.

²Marine Science and Technology Department, University of Oviedo, Oviedo, Spain.

*Corresponding author. E-mail: maza@uniovi.es

Received: 5 March 2021; **Accepted:** 4 May 2021; **First published online:** 24 May 2021

Keywords: collision risk reduction, COLREGs, decision support systems, inter-ship communications, maritime safety

Abstract

Non-compliance with or misinterpretation of the International Regulations for Preventing Collisions at Sea (COLREGs) when assessing vessel encounters, and the lack of good communication between the vessels involved in a critical situation, are primary contributing factors in collisions. Vessels engaged in an encounter should be aware that they are part of the same scenario and situation, which can become critical. Sharing and contrasting their information about the encounter would help those responsible to take manoeuvring decisions in a consistent way. There are situations whose evaluation by the respective officers in charge of the navigational watch may diverge and lead to disagreements on the actions to be taken. If there is no proper inter-ship communication, a collision may result. This paper presents a proposal for safety communication implemented in a programmable system using common equipment (automatic identification system), and applies it to a case study of one such special situation, showing how it could help to reduce the risk of collision.

1. Introduction

Reports and analysis of marine accidents (EMSA, 2019; DMAIB, 2020; JTSA, 2020; MAIB, 2020; MSIU, 2020; SHK, 2020) point to collisions as being the most common cause of navigational casualties, and to human erroneous actions as the primary accidental events. According to a review of the literature on collision avoidance methods (Huang et al., 2020), two main approaches are used in technologies for reducing the risk due to human factors:

1. techniques to assist on-board officers in charge of the navigational watch (OONWs), and
2. development of autonomous systems to eliminate human factors, by automating some of the operation or control tasks, depending on the different degrees of autonomy (IMO, 2018).

Among the main contributing human errors in ship collisions that have been reported (Sotiralis et al., 2016; Ung, 2019; Weng et al., 2019; Yıldırım et al., 2019) are: errors in supervision (not keeping appropriate lookout, failure to take early actions), misinterpretation of COLREGs (IMO, 1972) and poor/lack of communication between the vessels' OONWs. Communication failures are mainly related to ambiguities, misunderstandings, unsuitable devices and absence of closed-loop communication (Boström, 2020) to provide feedback on messages. Very high frequency radio (VHF) has been the only communication medium for many years and its misuse is a contributing factor in a significant number of casualties (MCA, 2016).

Whether under manual or automatic control, vessels involved in an encounter will face less risk if they reach an agreement (explicit or not) on the manoeuvres needed to avoid the hazardous situation. Regulations for decision making, COLREGs, have been designed to determine these manoeuvres without requiring any communication between the vessels. But, on the other hand, safe navigation demands the use of all available means to obtain optimum situational awareness (Tsimplis and Papadas, 2019), as stated in COLREG Rule 5.

Given that lack of communication between ships and violations of COLREGs, as already mentioned, occur frequently in collision cases, it seems necessary to reconsider the premise of non-communication. Some authors propose distributed calculations, assuming an inter-ship communication, with ships broadcasting (Zhang et al., 2015) or negotiating (Kim et al., 2017) their manoeuvring intentions.

A new approach that aimed to increase the OONW's ability to monitor and handle hazardous situations, in line with Safety II perspective (Hollnagel et al., 2013) in which 'humans are seen as a resource necessary for system flexibility and resilience', was introduced by Argüelles et al. (2019). The aim of the suggested system is to reduce the risk of collision from the above factors by helping the OONWs to take early and correct actions in accordance with COLREGs and improving the communication between them.

The application of these measures would consist of a system integrated on the bridge, in charge of detecting the dangerous situation, determining the actions and informing the OONW so that they can control the manoeuvres more safely, in compliance with the COLREGs and without conflict with the other vessel. Similar measures could also be applied to unmanned vessels. In that case, the safety instrumented system would be responsible for detecting, calculating and transmitting the reference signals of the manoeuvres to be carried out to the ship's movement control system.

The most innovative characteristic of the proposed safety system is that the decision on collision avoidance manoeuvres is not taken in isolation by each ship, but after comparing the information that the ships involved have about the situation. The strategy is simple: would it not be better and more reliable if, where possible, a vessel had the same information that the vessel with which she is in a close-quarters situation uses to make a decision, rather than having to 'guess' the other vessels' intentions? The aim would be to implement communicative encounters, understood as those in which each vessel makes information available to the other to assist in correct decision making in the event of collision risk.

The system's intended functionality can be summarised as follows. When the system installed on a ship detects a risk of collision or close-quarters situation with another ship, it will perform the following tasks, in order:

- Identify the COLREG rules to be applied depending on the scenario and the situation.
- Identify possible manoeuvres for a safe passage.
- Warn its OONW.
- Communicate with the system at the target, to inform and reach agreements for manoeuvring between both OONWs.

The implementation of this system entails the identification of all possible close-quarters situations, scenarios and navigational statuses in a vessel encounter, and the definition of unambiguous messages to inform the OONWs of the manoeuvres to be carried out, all in compliance with COLREGs.

This paper describes the defined inter-ship dialogue and communication messages, using a study case to illustrate the suitability of the prototype. Section 2 shows an analysis of vessel encounters, the corresponding manoeuvres inferred from COLREGs and the structure of the associated messages. In addition to considering the situations for 'vessels in sight' scenarios (head-on, overtaking and crossing), the analysis also includes the conduct of vessels in restricted visibility scenarios (Rule 19), since manoeuvres may differ. Section 3 outlines the main aspects concerning the implementation of the prototype. Section 4 presents an example of an encounter between two ships that may lead to disparate decisions and manoeuvres by their OONWs, and therefore with high risk of collision. Section 5 describes how the system would operate in this encounter and discusses the obtained results. Section 6 presents the main conclusions.

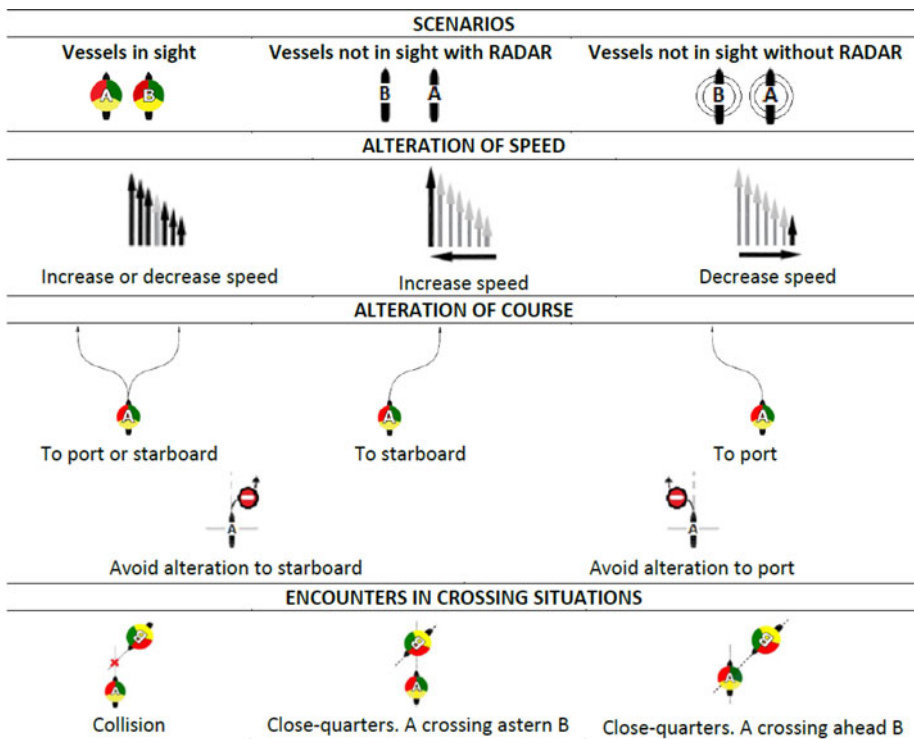


Figure 1. Basic symbols used in pictograms.

2. Analysis of vessel encounters and associated manoeuvres

One of the fundamental issues that this paper tries to avoid is the common oversimplification of COLREGs. It is a complex text, which generates uncertainties. We do not know whether it will be simplified or modified in the future, but we will start from the text in force today.

According to the visibility in the encounter area, COLREGs distinguish between three scenarios:

- Vessels in sight (COLREGs Section II),
- Vessels not in sight with radar (COLREGs Section III-19 d), and
- Vessel not in sight without radar (COLREGs Section III-19 e).

Any ship with a totally enclosed bridge must be equipped with a sound reception system. Although the inclusion and use of the information provided by such equipment could be considered, because of its simplicity (basically, only possible variations in bearings) and the fact that it is not compulsory for all ships, the authors decided to defer this scenario of detection only by sound signals (Rule 19 e) to later studies.

Due to constraints of word length, only navigation on the high seas is considered. Criteria and algorithms referring to geographical restrictions: narrow channels, traffic separation schemes, inshore traffic zones and traffic lanes, will be part of further work.

The first step in this analysis consists of identifying all the possible ship-to-ship approaches for each scenario, obtained from their relative positions and headings. Twenty-eight different encounters have been identified: 19 for vessels in sight scenarios and nine for vessels in restricted visibility scenarios. Each of these encounters will have an associated message to inform the OONWs of both vessels.

It should be noted that there is not a standardised language for collision avoidance in the International Maritime Organization (IMO) Standard Marine Communication Phrases (SMCP) (IMO, 2001). Even in the IMO Model Course 3·17 Maritime English, the importance of ‘understand and use vocabulary



Figure 2. Situations and manoeuvres for ‘vessels in sight’ scenarios (COLREGs Section II).

associated with COLREGs accurately’ is recognised, but without setting a standard phraseology. This is not logical, as the potential assistance that a VHF conversation could provide may be counter-productive if English is not adequately mastered (Sari and Sari, 2020).

The authors believe that there is a need for standardisation of messages that simply and unambiguously inform OONWs of what is considered essential to reduce the risks of encounters:

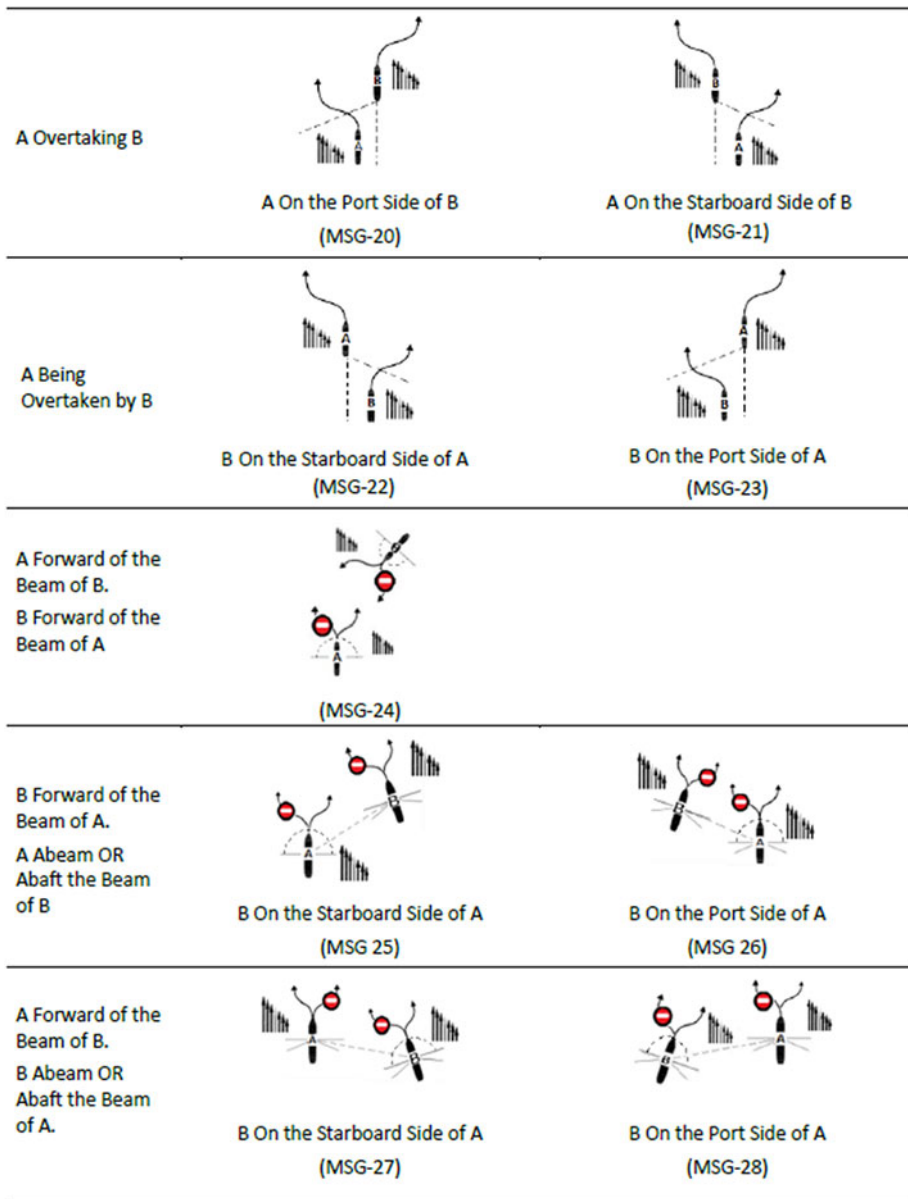


Figure 3. Situations and proposed manoeuvres for ‘vessels not in sight with radar’ scenarios.

- (a) Identification of situation + scenario.
- (b) COLREG Rule(s) to apply, including Rule 18, which, depending on the navigational status of the vessels, could alter the default priorities for manoeuvring.
- (c) Information about the situation and, when appropriate, about own shipside (port, starboard) or beam (forward-ahead, abeam, abaft-astern) in the closest point of approach (CPA) with the target. In this paper, CPA will refer to the distance at the closest point of approach as defined for RADAR equipment (IMO, 2004).
- (d) Prescribed conduct for the vessels (using text and/or images).

For this purpose, messages have been generated using pictograms and phrases that are in line with COLREGs. Figure 1 shows the basic symbols used for the representation of these situations and

Table 1. Text associated with some of the defined messages.

MSG-ID	Message
MSG-3	<ul style="list-style-type: none"> a) Overtaking. Vessels In Sight. b) Rule 13. c) A Being Overtaken By B. d) B SHALL KEEP OUT OF THE WAY OF A.
MSG-6	<ul style="list-style-type: none"> a) Head-On. Vessels In Sight. b) Rules 14 + 18. Priorities. c) A In Head-On Situation With B. d) A, WITHOUT PRIORITY, SHALL KEEP OUT OF THE WAY OF B.
MSG-18	<ul style="list-style-type: none"> a) Crossing. Vessels In Sight. b) Rule 15. c) A Crossing Ahead Of B. B On The Port Side Of A. d) B SHALL KEEP OUT THE WAY AND AVOID CROSSING AHEAD OF A.
MSG-22	<ul style="list-style-type: none"> a) Overtaking. Vessels In Restricted Visibility. Radar Detection. b) Rule 19. c) A Being Overtaken By B. d) B SHALL CHANGE COURSE TO STARBOARD SIDE/CHANGE SPEED. A SHALL CHANGE COURSE TO PORT SIDE/CHANGE SPEED.
MSG-26	<ul style="list-style-type: none"> a) B Is Forward Of The Beam Of A. A Is Abeam Or Aft The Beam Of B. Vessels In Restricted Visibility. Radar Detection. b) Rule 19. c) B On The Port Side Of A. d) A SHALL AVOID AN ALTERATION OF COURSE TO PORT SIDE. B SHALL AVOID AN ALTERATION OF COURSE TO STARBOARD SIDE.

associated manoeuvres. [Figure 2](#) outlines all the different encounters between two vessels (A, B) in a vessels in sight scenario and their expected conduct according to COLREGs, taking into account their passage priorities, obtained from their navigational status and responsibilities (Rule 18). [Figure 3](#) outlines the encounters for vessels in restricted visibility scenarios. Phrases and expressions used in the messages are mainly taken from COLREGs. [Table 1](#) shows the text of some of the defined messages.

3. Characteristics of the safety related system

The programmable electronic system that implements the safety functions for collision avoidance (conflict detection and resolution) is responsible for data acquisition, processing and communication on each ship. A programmable logic controller (PLC) receives from an automatic identification system (AIS) static and dynamic information about own ship and nearby targets. It uses the AIS as a communications channel to send and receive messages to/from the PLCs of the other ships, through addressed binary messages and acknowledgements (ACKs). [Figure 4](#) represents its structure.

3.1. Brief outline of the programmable electronic system

It was decided to use a PLC as the core of the system. The main reasons for using PLCs are: their real-time mode of operation, the availability of input and output interfaces for all process signals and for communications with other devices, and their robustness.

For correct functionality, the PLC requires some information from the OONW/System regarding several ship/scenario criteria, defined in [Table 2](#). Those parameters will determine the following logical terms:

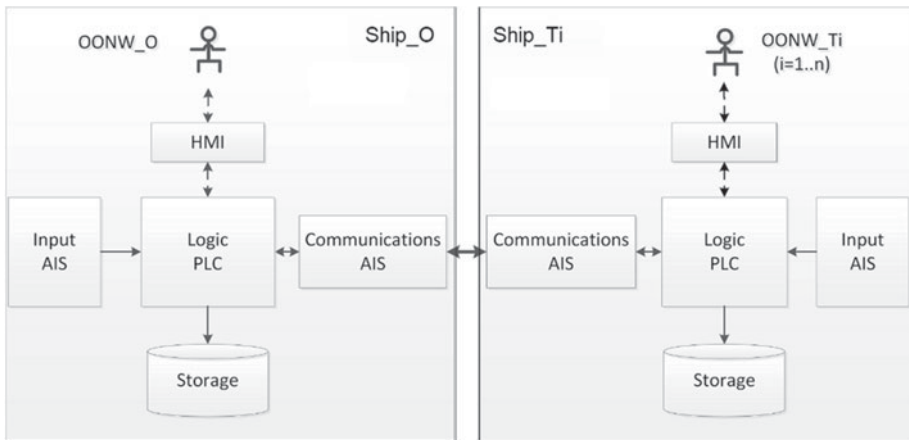


Figure 4. Diagram of programmable electronic system.

Table 2. Required parameters.

VIS	Visibility Scenario: in sight, not in sight with radar, and not in sight without radar.
LRS	Long Range Scanning: distance to start analysing encounters.
CPASafe	Limit value for CPA: minimum CPA, limit between safe distance and close quarters.
TCPASafe	Minimum value for TCPA, if CPA < CPASafe, to start manoeuvres (including the estimated time to decide and set the manoeuvre).
dPrealert	Distance to start manoeuvres (including the estimated distance to cover while deciding and setting the manoeuvre) if own ship is a vessel which is required not to impede the passage or safe passage of another vessel. It depends on the relative speed and on the type and dimensions of the ships.
dAlert	Distance to start manoeuvres (including the estimated distance to cover while deciding and setting the manoeuvre) if own ship is a vessel the passage of which is not to be impeded, in the event that the other vessel does not act correctly. It depends on the relative speed and on the type and dimensions of the ships.

- Safe distance: $CPA \geq CPASafe$.
- Close quarters/risk of collision: $CPA < CPASafe$.
- Prealert: $CPA < CPASafe$ and ($[distance \leq dPrealert]$ or $[TCPA < TCPASafe]$).

Once the information has been obtained, each PLC will, cyclically:

- Receive from the AIS the static information (identification, name, type of vessel, dimensions) and dynamic information (latitude, longitude, heading [H], speed over ground [SOG], rate of turn [ROT], navigational status) of own and nearby vessels, and the transmitted binary messages.
- Perform the calculations of distance (d), bearing (B), relative speed (S_R), relative course (C_R), CPA and TCPA .
- Determine if there is a close-quarters situation in each ship-to-ship encounter, and the actions to be taken by both ships.
- In case of prealert:
 - Communicate the data and the calculated rules to apply to the OONW and wait for his/her response.
 - Exchange messages with the PLC of the target ship.

Table 3. *Check and confirmation messages.*

Message (MSG) from PLC_Own to PLC_Target	MSG-ID
Own Ship enters in Prealert. Init and check comm with PLC_Target	MSG-50
Reception of MSG 50 from PLC_Target	MSG-51
OONW_Own agrees with the MSG received from Target	MSG-52
OONW_Own doesn't agree with MSG received from Target	MSG-53
PLC_Own has these available data about the Target	MSG-54
OONW_Own Resets the agreement with OONW_Target	MSG-55
PLC_Own agrees with the data received from PLC_Target – Response to MSG 54	MSG-56
PLC_Own doesn't agree with the data received from PLC_Target – Response to MSG 54	MSG-57
OONW_Own doesn't answer to the received MSGs	MSG-58
Periodic checking of communication between PLCs	MSG-59
Reception of MSG 55 from PLC_Target	MSG-60
Own Ship leaves Prealert	MSG-61

Table 4. *Initial data for own and target ships.*

	OWN _{SHIP}	TARGET _{SHIP}	CPA	TCPA
Position	(0,0)	(0.77, -2.59)	0.104'	21.1 min
Heading	329.0°	353.0°		
Speed	17 kn	12.2 kn		

- Send the calculated information to check if there is agreement in the data handled by both PLCs, and wait for the target PLC's answer. If there are differences between the data they handle, each PLC will warn its operator.
- If there is agreement on the previous point, the PLC sends the calculated manoeuvre to the target PLC and waits for it to inform its operator and his/her response.
 - (a) Inform OONWs of agreements, possible disagreements, delays, communication failures, etc.
 - (b) Inform OONWs about possible manoeuvres to achieve safe distance.
 - (c) Store all relevant information for future reference.

A group of messages (see [Table 3](#)) is used to initiate or confirm the communication between the PLCs of own and target ships (PLC_Own and PLC_Target), to check the correspondence between their data and to inform the OONWs about agreements or disagreements.

3.2. Manoeuvring calculations for collision avoidance

In case of prealert with a target, besides showing the OONW the information on the encounter and the messages according to COLREGs, the system will calculate and inform the OONW about ranges of course or speed for which $CPA \geq CPASafe$, as an aid to determine the manoeuvre to perform. [Table 4](#) shows the initial data for an illustrative example that will be used in the study case. Target positions (latitude [lat], longitude [lon]) are in miles relative to own ship.

The example is an overtaking situation in a vessels in sight scenario, with own ship overtaking target. According to Rule 13 of COLREGs, the overtaking vessel shall keep out the way of the vessel being overtaken, if there are no other impediments or priorities.

A $CPASafe = 0.5$ miles is set. The relative courses (C_{R1} and C_{R2}) at this distance to achieve the safe CPA are shown in [Figure 5](#) (lengths not proportional to distance).

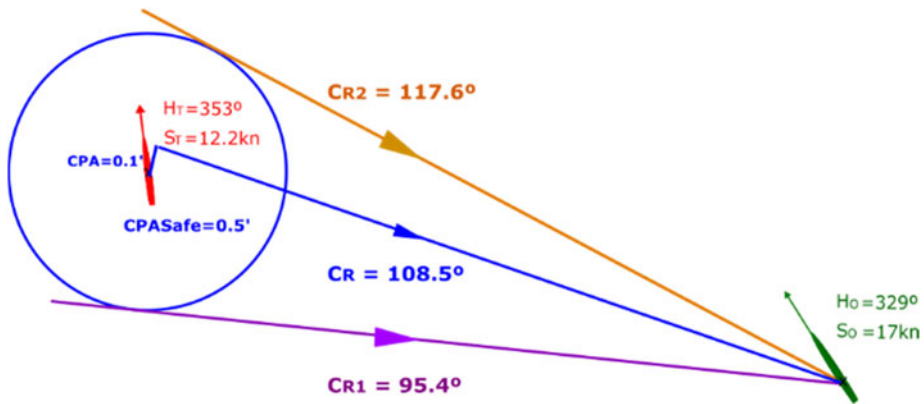


Figure 5. Relative courses, for CPASafe = 0.5 miles.

Figure 6 represents the polar chart (R, Theta) with velocity vectors (S_O, H_O), (S_T, H_T) and relative courses CR_1 and CR_2 . $S_{O\text{Max}}$ and $S_{O\text{Min}}$ are the maximum and minimum speeds for own ship. The shaded area corresponds to the values of the velocity vector (S_O, H_O) for which $CPA < CPASafe$, assuming the target is a stand-on ship. It is called the velocity obstacle (VO) area (Fiorini and Shiller, 1998). To pass at a safe distance by alteration of course alone, the selected heading must be out of the arc limited by H_{O1} and H_{O2} . Similarly, manoeuvring only by altering the speed will require that ($S_O > S_{O2}$) or ($S_O < S_{O1}$). Taking into account the dynamic characteristics of the ship (manoeuvrability parameters), the relative speed and the distance to the target, relative courses are recalculated, increasing the VO area.

A real-time graph similar to Figure 6(c) will be displayed. Own ship OONW can move the cursor over the chart, to select $R(S_O)$ and $\Theta(H_O)$ values for a safe manoeuvre.

4. A case study

All marine accident reports include a synopsis, factual information, analysis, conclusions and recommendations. The conclusions give a resumé of the probable causes of the accident. Frequent alleged causes for ship collisions are wrong decisions or lack of early actions by OONW and failures or misunderstandings in communications between OONWs.

One of the most striking cases is related to the boundary between overtaking and crossing situations, which can create errors of appreciation and incorrect application of COLREGs, as in one of the examples from the reports (MAIB, 2005). The legal outcome of a collision between two bulk carriers in Singapore waters (SGHC, 2017) has particularly caught the authors' attention.

Differences in the assessment of the situation can also result in a discrepancy regarding the responsibilities of the vessels. This special situation is a case to illustrate the functionality and applicability of the system.

The situation shown in Figure 7, equivalent to the example in the previous section, is used as the study case. If both ships continue with uniform movement, at a distance of 1.8 miles the situation becomes crossing, with SHIP-ONE on the starboard side of SHIP-TWO.

Let us suppose that the OONWs of both ships have set a CPASafe of 0.5 miles. Both should apply COLREGs since there is a risk of collision ($CPA < CPASafe$). When do the OONWs react and start applying the rules? Different possibilities are analysed, assuming a correct interpretation of COLREGs:

- Both OONWs react when the distance between the ships is greater than 1.8 miles ($d_{\text{Prealert}} > 1.8$). Both perform the calculations and determine that SHIP-ONE is overtaking SHIP-TWO, in a vessels in sight scenario. Applying Rule 13, SHIP-ONE must manoeuvre to keep out of the way of SHIP-TWO, which does not have to manoeuvre, in a first moment.

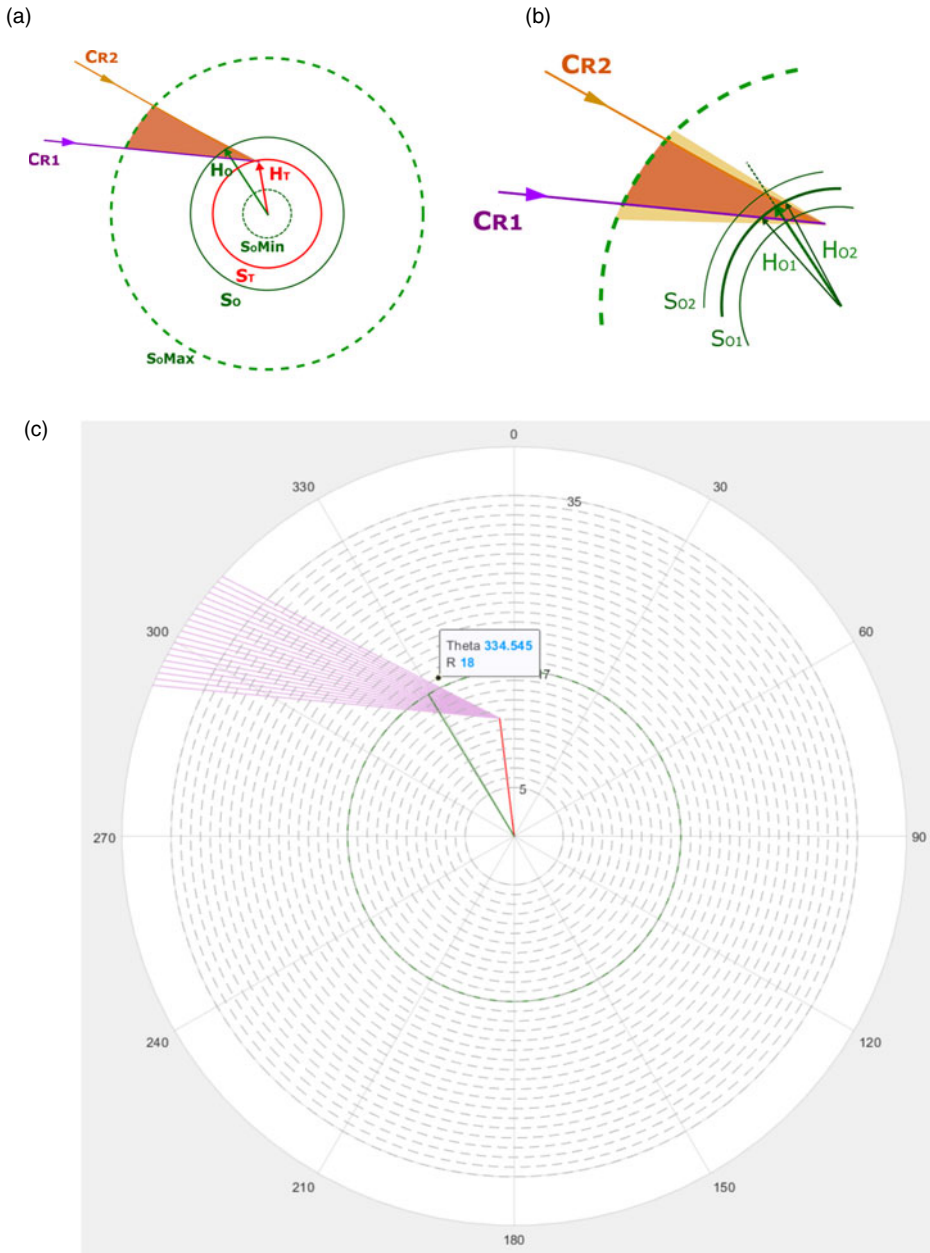


Figure 6. Polar chart with VO area for own ship velocity vectors: (a) current velocity vectors and relative courses bounding the unsafe CPA; (b) limit values for own ship heading and speed; (c) real-time polar graph.

- Both OONWs have $dP_{alert} < 1.8$ miles. Both perform the calculations and determine that they are in a crossing situation, SHIP-ONE on the starboard side of SHIP-TWO, in a vessels in sight scenario (Rule 15). SHIP-TWO must keep out of the way and avoid crossing ahead of SHIP-ONE, which does not have to manoeuvre, in a first moment.
- As it is not defined when (at what distance or how long in advance) operators have to react, let us suppose that $dP_{alert} > 1.8$ miles for SHIP-TWO and $dP_{alert} < 1.8$ miles for SHIP-ONE. SHIP-TWO OONW does not start a manoeuvre since he/she deduces (correctly) that Rule 13 has to



Figure 7. Overtaking situation, vessels in sight (lengths not proportional to distance).

be applied and that SHIP-ONE has to manoeuvre. And SHIP-ONE OONW does not start a manoeuvre since he/she deduces (also correctly) that Rule 15 must be applied, so that SHIP-TWO should manoeuvre, as in the Singapore case. Consequently neither ship manoeuvres and the distance between them keeps decreasing until, at best, an OONW realises that they are too close and is forced to manoeuvre, according to Rule 17, Action by stand-on vessel.

- Finally, if $d_{\text{PreAlert}} > 1.8$ miles for SHIP-ONE and $d_{\text{PreAlert}} < 1.8$ miles for SHIP-TWO, then SHIP-ONE OONW should manoeuvre in advance, as SHIP-ONE is overtaking SHIP-TWO. If this manoeuvre is not initiated or apparent before SHIP-TWO enters in prealert and identifies that they are in a crossing situation, however, both ships could turn to starboard, increasing the risk of the situation.
- In real conditions, the calculated boundary between overtaking distance and crossing distance may vary slightly. Near that distance both operators may have reacted at the same time, may have performed the calculations correctly and may have inferred different situations and therefore apply different COLREG rules. Anyway, SHIP-ONE OONW should keep in mind Rule 13 (c): ‘when a vessel is in any doubt as to whether she is overtaking another, she shall assume that this is the case and act accordingly’.

If a vessels in restricted visibility scenario is also considered, there will be more combinations of reactions from operators, thus increasing the risk of collision. The number of conflicting reactions increases further when adding the cases where there is not agreement about the visibility.

The foregoing considerations, assuming proper interpretations of COLREGs and correct calculations that nevertheless result in faulty manoeuvres, could be extrapolated to possible implementations for autonomous vessels, with the risk that this entails. Even by communicating a disagreement with the other ship’s diagnosis, to know it gives a degree of certainty that is not otherwise achieved.

To these considerations should be added those cases in which, for reasons of misinterpretation of COLREGs or faulty calculations, an OONW takes erroneous manoeuvring decisions that could be highlighted by the other vessel’s comments.

5. System performance: results and discussion

This section shows the results of applying the implemented prototype of the system to the described example case. Initial given values are displayed in Table 5. SHIP-ONE uses PLC1 and AIS1; SHIP-TWO PLC2 and AIS2.

Figure 8 includes information visualised by each OOWN, with the calculated data in PLC1 (left) and PLC2 (right) before detecting a prealert situation. The calculated CPA is less than CPA_{Safe} for both ships. From the initial data, SHIP-ONE will enter in prealert when ($\text{distance} \leq 1.5$) or ($TCPA \leq 10.0$). For SHIP-TWO, the selected distance for prealert is 2.3 miles. At that distance, as shown in Figure 9, vessels are in an overtaking situation (SHIP-ONE overtaking SHIP-TWO).

Figure 10 represents the sequence of messages between the systems. When PLC2 detects prealert, it shows its operator the information about the encounter. If the operator agrees, PLC2 sends PLC1 the message MSG-50 (see Table 3) to start the dialogue, it waits for the reception of MSG-51 and then

Table 5. *Initial data.*

Parameter	PLC1	PLC2
Ship name (ID)	SHIP-ONE	SHIP-TWO
Latitude	0° 0' 0'' N	0° 0' 47'' N
Longitude	0° 0' 0'' E	0° 2' 37'' W
Navigational status (0...15)	0 (under way using engine)	0 (under way using engine)
Visibility (good, restricted)	good	good
Heading	329.0	353.0
Speed	17.0	12.2
LRS (miles)	12.0	12.0
CPASafe (miles)	0.5	0.5
TCPASafe (min)	10.0	10.0
Dist Prealert (miles)	1.5	2.3
Dist. Alert (miles)	0.8	1.2

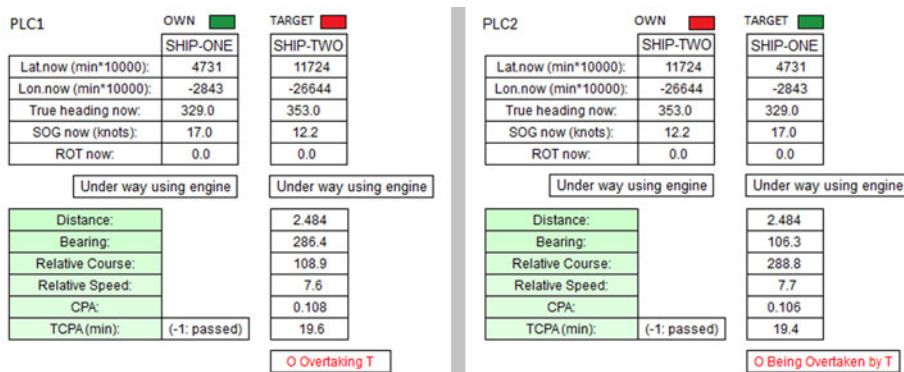


Figure 8. *Received and calculated data in each PLC, before prealerts.*

it sends to PLC1 the message with the associated dynamic information (MSG-54). PLC1 checks the matching with its data. If they match, PLC1 sends MSG-56 and then PLC2 sends MSG-3 (see Table 1), with the information for the agreement, and advises its operator that it is waiting for an answer from SHIP-ONE’s OONW. PLC1 displays the received information, and if the operator agrees, both PLCs inform about the agreement. MSG-50, MSG-51, MSG-52, MSG-54, MSG-56 and MSG-3 are sent by means of addressed binary AIS messages (AISMSG6). The AIS that receives an addressed binary message acknowledges it by sending back an ACK (AISMSG7). The waiting time for the reply to any message is limited. In case of delay, the PLC alerts its operator.

Figure 11 illustrates the prealert messages sent to the OONWs, as in Figure 10, but in a restricted visibility scenario (MSG-26).

The situation turns into crossing when distance <1.8 miles. As SHIP-TWO is already in prealert at this distance, she maintains the overtaking situation (in which the prealert has been generated), in compliance with COLREG Rule 13 d: ‘Any subsequent alteration of the bearing between the two vessels shall not make the overtaking vessel a crossing vessel within the meaning of these Rules or relieve her of the duty of keeping clear of the overtaken vessel until she is finally past and clear.’

As SHIP-ONE is not yet in prealert (her dPrealert = 1.5 miles), her system recognises the crossing situation. If distance <1.8 miles when SHIP-TWO sends to SHIP-ONE the manoeuvring message, the situations are those given in Figure 12.

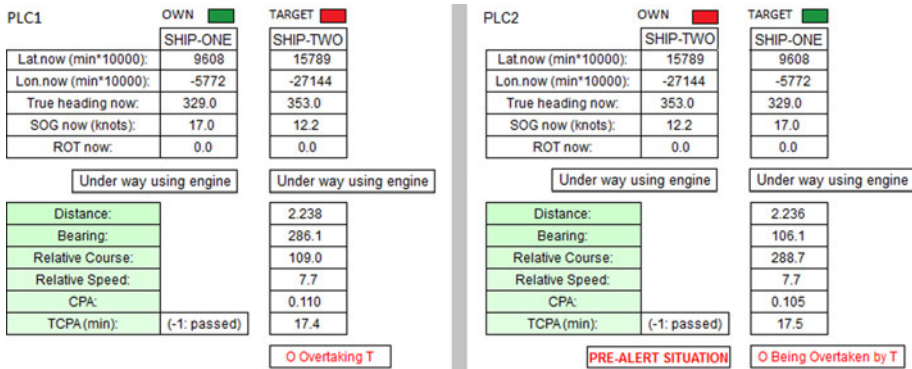


Figure 9. Received and calculated data, SHIP-TWO in prealert.

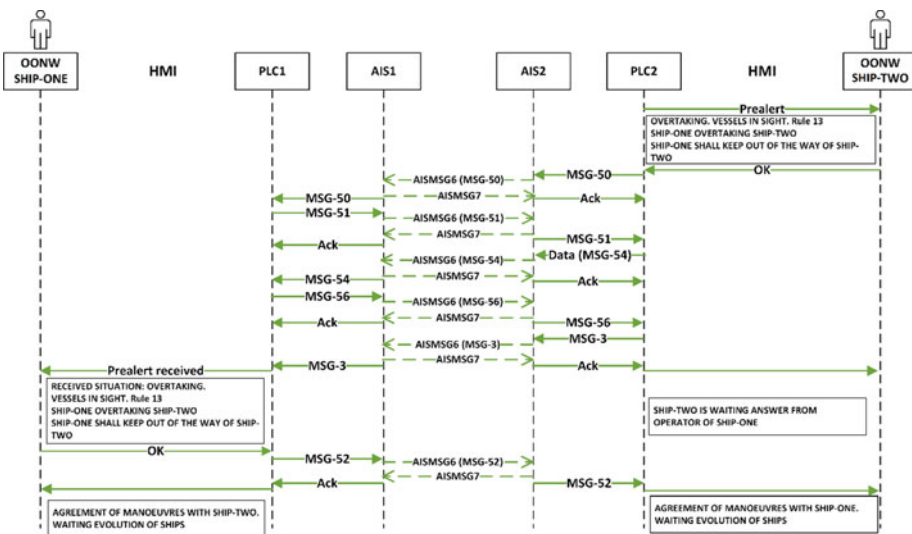


Figure 10. Sequence of messages, in case of agreement between OONWs.

The sequence of messages, if SHIP-TWO OONW agrees with the warning of prealert from PLC2, is shown in Figure 13. PLC1 detects differences in the received data (in MSG-54) with respect to its own data, and warns its operator. So, SHIP-ONE OONW sees that SHIP-TWO has detected a ‘being overtaken’ situation. In addition, PLC1 sends to PLC2 the message with the dynamic information available in SHIP-ONE, and SHIP-TWO OONW also sees the difference. Discrepancies in numerical values (distance, CPA, etc.) are allowed within predefined tolerance ranges.

Finally, let us assume that the prealert distance defined for SHIP-TWO (1.2 miles) is less than that given for SHIP-ONE (1.5 miles). In this case, PLC1 first detects the prealert situation, warns its operator and then the corresponding exchange of messages will take place. Both systems recognise a crossing situation, with SHIP-ONE crossing ahead on the starboard side of SHIP-TWO. The sequence of messages is shown in Figure 14.

All the sent or received messages and their associated dynamic data, with date and time, will be stored by each PLC in an external database, for further consultation.

The final implementation of this system will require ships to be equipped with a PLC and an AIS, for data acquisition and communication of messages for agreements between the OONWs. Although the availability and reliability of AIS data has been improving over time (Tu et al., 2018), its use can be combined with other equipment for data input. These data would be redundant with those from AIS and

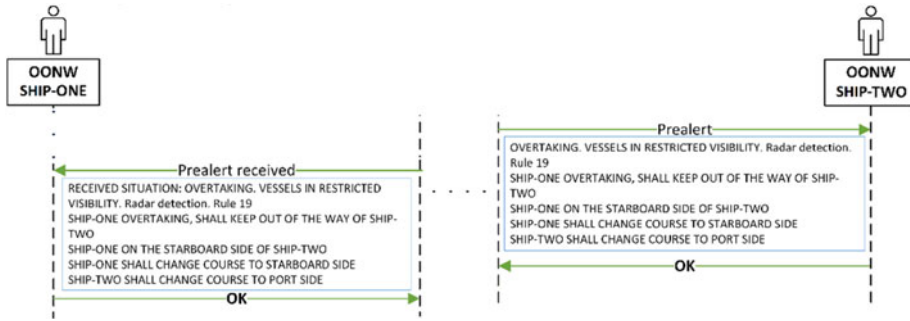


Figure 11. *Prealert messages, restricted visibility.*

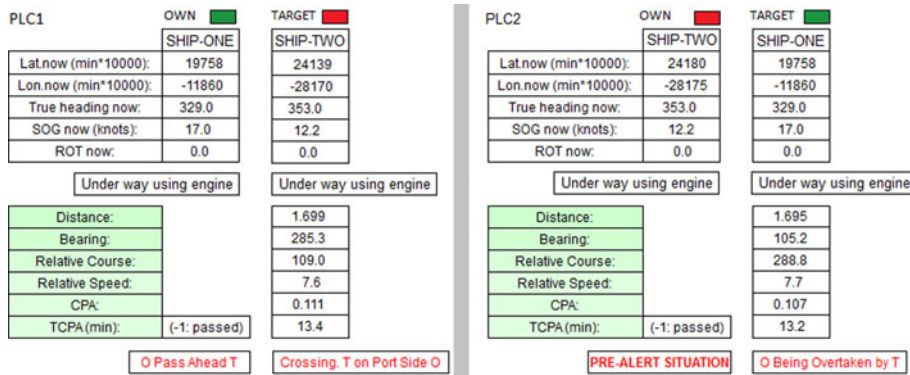


Figure 12. *Received and calculated data, discrepancies.*

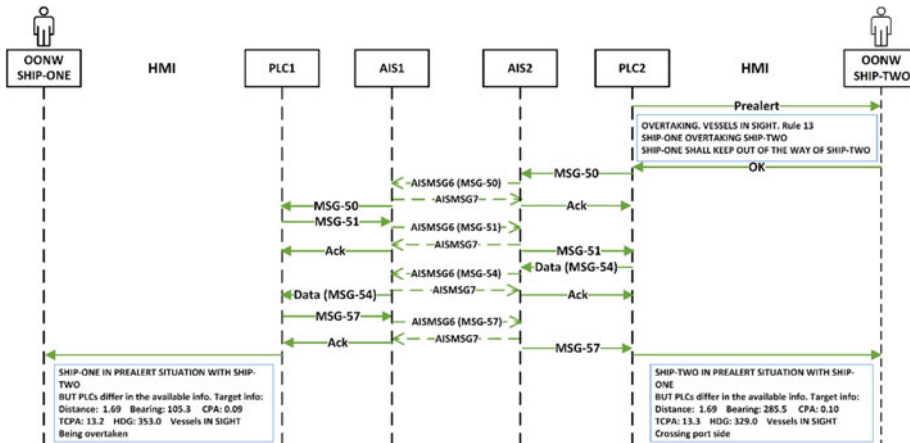


Figure 13. *Sequence of messages, in case of data discrepancies between PLCs.*

could be used to improve the availability and integrity of dynamic information (Last et al., 2014; Felski et al., 2015), and hence the reliability of the model.

A common criterion in the assignation of values for CPASafe, TCPASafe, LRS (long range scanning), dPrealert and dAlert, and their dependence on the type of vessels and relative speeds must be established. It is also necessary to define the allowed tolerance for the acquired dynamic values.

With the dynamic information provided by the AIS, the developed system has enough data to be able to apply COLREG Section II rules, corresponding to vessels in sight. However, for vessels in restricted

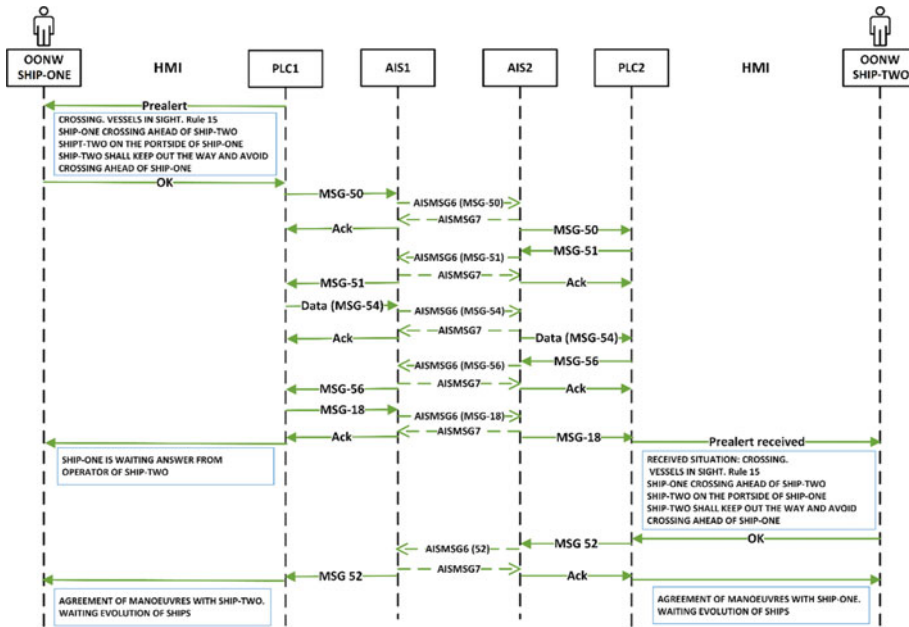


Figure 14. Sequence of messages, $d_{Prealert} = 1.5$ miles.

visibility, Section III must be applied. In this case, current COLREGs only consider explicitly the information provided by the radar or by sound signals for the detection of another vessel. If this rule is not modified, the decision about the manoeuvre based on the information obtained from the AIS could be questioned. Nevertheless, the use of AIS as the source of information made in this work is supported by IMO Resolution A.1106 (IMO, 2015), COLREG Rule 5 and legal interpretations, e.g., the *Western Neptune* and *St Louis Express* collision (Tsimplis and Papadas, 2019).

In this model input from the OONWs is necessary, indicating whether they are in a vessel in sight or not in sight scenario, in order to apply the rules of Section II or Section III. The overtaking situation of vessels in restricted visibility is identified in rule 19 d: ‘the following shall be avoided: (i) an alteration of course to port for a vessel forward of the beam, other than for a vessel *being overtaken*’. COLREGs do not define what to do in this case.

This model proposes the following:

- In an overtaking situation with restricted visibility, both vessels have to manoeuvre. The overtaking vessel must manoeuvre to the opposite side by which she is overtaking. The other vessel, to the opposite side by which she is being overtaken. See, as an example, Table 1, MSG-22.
- For the rest of situations in restricted visibility with radar detection, the system determines what alteration of course each ship should avoid, as shown in Table 1, MSG-26.

In each agreement, the OONWs of both vessels agree, or not, on the following:

- (a) Time to start actions to avoid collision.
- (b) Scenario in which they are: vessels in sight or vessels in restricted visibility with radar.
- (c) Situation, depending on the scenario.
- (d) Rule to apply, including the alternative dependent on the navigational status.

The agreement does not quantify the manoeuvre, that is, values for heading or speed that should be ordered if there is a close-quarters situation or risk of collision exists are not included in the inter-ship messages. It is assumed that the calculation of the manoeuvre is the mission of the OONW. Anyway,

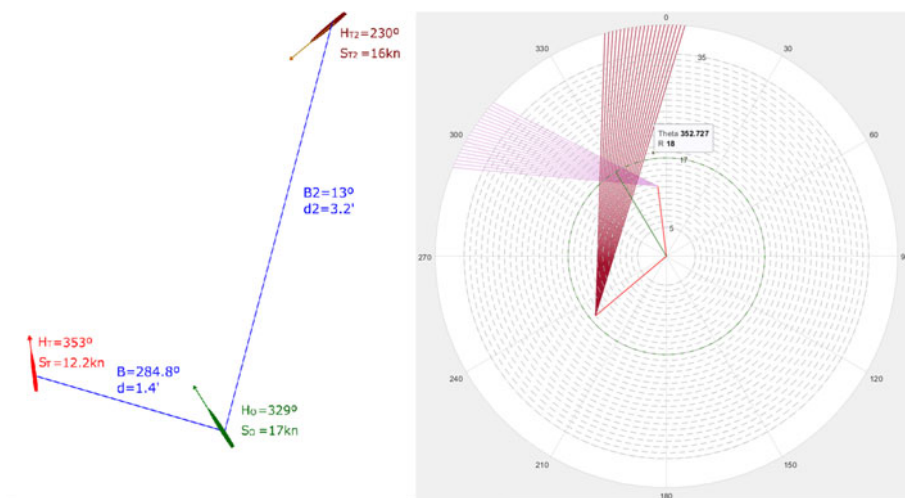


Figure 15. Chart display with two targets.

the system provides each operator with heading and speed values for which $CPA \geq CPASafe$. They can select between different options to visualise the VO areas:

- all targets in their LRS,
- only a particular target,
- targets for which there is a prealert situation,
- stand-on targets.

Figure 15 shows an example, with an additional target.

From these manoeuvring data, the visualisation of the COLREG rules to apply, and the information about the agreement (or disagreement) with the target, the OONW can decide the most suitable manoeuvre. A new binary message could be defined to broadcast, by using AIS MSG 8, the selected manoeuvre.

A simple human–machine interface (HMI) was used in the tests. Possible HMI formats are being analysed, to facilitate the OONW tasks without increasing the risk of human error (EU-OSHA, 2009; Szlupczynski and Szlupczynska, 2015; Pietrzykowski et al., 2017; Ramos et al., 2019). The HMI must include an audible signal to warn the OONW about the reception of any AIS binary message.

For a critical encounter, this communication system informs the involved ships about the Prealert and Alert distances ($d_{Prealert}$, d_{Alert}) of both. This could avoid high-risk situations, such as those that can occur in a critical encounter between ships of different sizes, in which a large ship, with large $d_{Prealert}$ and d_{Alert} values and still having priority of passage, would have the need to manoeuvre a small ship if $d_{Prealert}$ of the small ship is lower than d_{Alert} of the big one. (Rule 17, Action by stand-on vessel).

6. Conclusion

Ship encounters that may generate a critical situation should be dealt with according to the COLREGs. These rules, in most cases, are presented as good, effective and understandable references. Manoeuvres carried out according to COLREGs are what is known as good seamanship. Nevertheless, it may happen that the interpretation of the rules by the OONWs in charge of encountering vessels is not homogeneous, which can lead to catastrophic results.

The model presented in this paper can act as an available means for a ship to maintain a proper lookout, and provides an appraisal of the situation and of the risk of collision, in support of COLREG Rule 5. The system offers a solution using common on-board equipment along with other easily accessible electronic

programmable devices. The defined unambiguous and standardisable messages and pictograms mean that problems derived from miscommunication between OONWs due to lack of common language or limited English skills would be avoided.

Even in special situations, such as the shown study case, the system allows each of those involved in the situation to be informed about the intentions and characteristics of the other, in particular about the safe and prealert distances for each ship. The messages, accompanied by audible signals, warn the OONWs, an essential feature to prevent lookout errors. It will thus be easy to agree on the manoeuvres to be carried out. In case of disagreement, better knowledge of the facts will allow the consequent adoption of other collision prevention measures.

References

- Argüelles, R., Maza, J. A. and Martín, F.** (2019). Specification and design of safety functions for the prevention of ship-to-ship collisions on the high seas. *Journal of Navigation*, **72**, 53–68. doi:10.1017/S0373463318000553.
- Boström, M.** (2020). Mind the Gap! A quantitative comparison between ship-to-ship communication and intended communication protocol. *Safety Science*, **123**, 104567. <https://doi.org/10.1016/j.ssci.2019.104567>
- DMAIB.** (2020). Danish Maritime Accident Reports. Available at: <https://dmaib.com/reports>. Accessed 9 October 2020.
- EMSA.** (2019). Annual Overview of Marine Casualties and Incidents 2019. Available at: <http://www.emsa.europa.eu/newsroom/latest-news/item/3734-annual-overview-of-marine-casualties-and-incidents-2019.html>. Accessed 9 October 2020.
- EU-OSHA.** (2009). The Human Machine Interface as an Emerging Risk. European Agency for Safety and Health at Work. doi: 10.2802/21813
- Felski, A., Jaskólski, K. and Banyś, P.** (2015). Comprehensive assessment of automatic identification system (AIS) data application to anti-collision manoeuvring. *Journal of Navigation*, **68**, 697–717. doi:10.1017/S0373463314000897.
- Fiorini, P. and Shiller, Z.** (1998). Motion planning in dynamic environments using velocity obstacles. *International Journal of Robotics Research*, **17**, 760–772. doi:10.1177/027836499801700706.
- Hollnagel, E., Leonhardt, J., Licu, T. and Shorrock, S.** (2013). From Safety-I to Safety-II: A White Paper. European Organisation for the Safety of Air Navigation (EUROCONTROL). doi:10.13140/RG.2.1.1626.6961
- Huang, Y., Chen, L., Chen, P., Negenborn, R. R. and van Gelder, P. H. A. J. M.** (2020). Ship collision avoidance methods: State-of-the-art. *Safety Science*, **121**, 451–473. doi:10.1016/j.ssci.2019.09.018.
- IMO.** (1972). International Maritime Organization. Convention on the International Regulations for Preventing Collisions at Sea (COLREGs).
- IMO.** (2001). Resolution A.918(22). Standard Marine Communication Phrases. International Maritime Organization.
- IMO.** (2004). Adoption of the Revised Performance Standards for RADAR Equipment. International Maritime Organization. Resolution MSC.192(79)- Annex 34.
- IMO.** (2015). International Maritime Organization. Resolution A.1106. Revised Guidelines for the Onboard Operational Use of Shipborne Automatic Identification Systems (AIS).
- IMO.** (2018). Regulatory Scoping Exercise for the Use of Maritime Autonomous Surface Ships (MASS) – Report of the Working Group. MSC 100/WP.8. International Maritime Organization.
- JTSB.** (2020). Japan Transport Marine Accident and Incident Reports. Available at: <http://www.mlit.go.jp/jtsb/marrep.html>. Accessed 9 October 2020.
- Kim, D., Hirayama, K. and Okimoto, T.** (2017). Distributed stochastic search algorithm for multi-ship encounter situations. *Journal of Navigation*, **70**, 699–718. doi:10.1017/s037346331700008x.
- Last, P., Bahlke, C., Hering-Bertram, M. and Linsen, L.** (2014). Comprehensive analysis of automatic identification system (AIS) data in regard to vessel movement prediction. *Journal of Navigation*, **67**, 791–809. doi:10.1017/S0373463314000253.
- MAIB.** (2005). *Report on the Investigation of the Collision between Hyundai Dominion and Sky Hope in the East China Sea*. Report no. 17/2005. Marine Department, Hong Kong, and Marine Accident Investigation Branch, Southampton, UK. Available at: https://assets.publishing.service.gov.uk/media/547c70b8ed915d4c10000a9/Hyundai_Sky_Hope.pdf. Accessed 9 September 2020.
- MAIB.** (2020). Marine Accident Investigation Branch Reports. Available at: <https://www.gov.uk/maib-reports>. Accessed 9 October 2020.
- MCA.** (2016). Navigation: Watchkeeping Safety–Use of VHF Radio and AIS. Maritime and Coastguard Agency. <https://www.gov.uk/government/publications/mgn-324-mf-navigation-watchkeeping-safety-use-of-vhf-radio>
- MSIU.** (2020). Accident and Incident Safety Investigation. Marine Safety Investigation Unit, Malta. Available at: <https://mtip.gov.mt/en/Pages/MSIU/Marine-Safety-Investigation-Unit.aspx>. Accessed 9 September 2020.
- Pietrzykowski, Z., Wolejsza, P. and Borkowski, P.** (2017). Decision support in collision situations at sea. *Journal of Navigation*, **70**, 447–464. doi:10.1017/S0373463316000746.
- Ramos, M. A., Utne, I. B. and Mosleh, A.** (2019). Collision avoidance on maritime autonomous surface ships: Operators' tasks and human failure events. *Safety Science*, **116**, 33–44. doi:10.1016/j.ssci.2019.02.038.

- Sari, L. I. and Sari, R. H.** (2020). Exploring English language needs of Indonesian marine pilots: a need analysis and its implications in ESP classrooms. *TransNav. International Journal on Marine Navigation and Safety of Sea Transportation*, **14**, 909–917. doi:10.12716/1001.14.04.15.
- SGHC.** (2017). Collision Between Two Bulk Carriers, the *Meghna Princess* and the *Dream Star*. Supreme Court of Singapore. Available at: <https://www.supremecourt.gov.sg/docs/default-source/module-document/judgement/adm-9---12-sep-finalised-released-pdf.pdf>. Accessed 3 March 2021.
- SHK.** (2020). Swedish Accident Investigation Authority, Maritime Accidents and Serious Incidents. Available at: <https://www.havkom.se/en/om-shk/civil-sjoefart>. Accessed 9 October 2020.
- Sotiralis, P., Ventikos, N. P., Hamann, R., Golyshev, P. and Teixeira, A. P.** (2016). Incorporation of human factors into ship collision risk models focusing on human centred design aspects. *Reliability Engineering and System Safety*, **156**, 210–227. doi:10.1016/j.ress.2016.08.007.
- Szlapczynski, R. and Szlapczynska, J.** (2015). A target information display for visualising collision avoidance manoeuvres in various visibility conditions. *Journal of Navigation*, **68**, 1041–1055. doi:10.1017/S0373463315000296.
- Tsimplis, M. and Papadas, S.** (2019). Information technology in navigation: problems in legal implementation and liability. *Journal of Navigation*, **72**, 833–849. doi:10.1017/S0373463318001030.
- Tu, E., Zhang, G., Rachmawati, L., Rajabally, E. and Huang, G.-B.** (2018). Exploiting AIS data for intelligent maritime navigation: a comprehensive survey from data to methodology. *IEEE Transactions on Intelligent Transportation Systems*, **19**, 1159–1582. doi:10.1109/TITS.2017.2724551.
- Ung, S.-T.** (2019). Evaluation of human error contribution to oil tanker collision using fault tree analysis and modified fuzzy Bayesian network based CREAM. *Ocean Engineering*, **179**, 159–172.
- Weng, J., Yang, D., Chai, T. and Fu, S.** (2019). Investigation of occurrence likelihood of human errors in shipping operations. *Ocean Engineering*, **182**, 28–37.
- Yıldırım, U., Başar, E. and Uğurlu, Ö.** (2019). Assessment of collisions and grounding accidents with human factors analysis and classification system (HFACS) and statistical methods. *Safety Science*, **119**, 412–425. doi:10.1016/j.ssci.2017.09.022.
- Zhang, J., Zhang, D., Yan, X., Haugen, S. and Guedes Soares, C.** (2015). A distributed anti-collision decision support formulation in multi-ship encounter situations under COLREGs. *Ocean Engineering*, **105**, 336–348. doi:10.1016/j.oceaneng.2015.06.054.