

Over-density of SMGs in fields containing $z \sim 0.3$ galaxies: magnification bias and the implications for studies of galaxy evolution.

L. Dunne,^{1,2}  L. Bonavera,^{3,4} J. Gonzalez-Nuevo,^{3,4} S. J. Maddox,¹

C. Vlahakis⁵

¹*School of Physics & Astronomy, Cardiff University, Queens Buildings, The Parade, Cardiff, CF24 3AA, UK*

²*SUPA, Institute for Astronomy, University of Edinburgh, Royal Observatory, Blackford Hill, Edinburgh EH9 3HJ, UK*

³*Departamento de Física, Universidad de Oviedo C/ Federico Garcia Lorca, 18, 33007 Oviedo, Spain*

⁴*Instituto Universitario de Ciencias y Tecnologías Espaciales de Asturias (ICTEA), C. Independencia 13, 33004 Oviedo, Spain*

⁵*National Radio Astronomy Observatory, 520 Edgemont Road, Charlottesville, VA 22903-2475, USA*

30 September 2020

ABSTRACT

We report a remarkable over-density of high-redshift submillimeter galaxies (SMG), 4–7 times the background, around a statistically complete sample of twelve $250\mu\text{m}$ selected galaxies at $z = 0.35$, which were targeted by ALMA in a study of gas tracers. This over-density is consistent with the effect of lensing by the halos hosting the target $z = 0.35$ galaxies. The angular cross-correlation in this sample is consistent with statistical measures of this effect made using larger sub-mm samples. The magnitude of the over-density as a function of radial separation is consistent with intermediate scale lensing by halos of order $7 \times 10^{13} M_{\odot}$, which should host one or possibly two bright galaxies and several smaller satellites. This is supported by observational evidence of interaction with satellites in four out of the six fields with SMG, and membership of a spectroscopically defined group for a fifth. We also investigate the impact of these SMG on the reported *Herschel* fluxes of the $z = 0.35$ galaxies, as they produce significant contamination in the 350 and $500\mu\text{m}$ *Herschel* bands. The higher than random incidence of these boosting events implies a significantly larger bias in the sub-mm colours of *Herschel* sources associated with $z < 0.7$ galaxies than has previously been assumed, with $f_{\text{boost}} = 1.13, 1.26, 1.44$ at 250, 350 and $500\mu\text{m}$. This could have implications for studies of spectral energy distributions, source counts and luminosity functions based on *Herschel* samples at $z = 0.2 - 0.7$.

Key words: Galaxies: Local, Infrared, Star-forming, ISM

1 INTRODUCTION

The effect of gravitational lensing on our view of the distant submillimeter (sub-mm) sky has been known and exploited since the beginning of the era of sub-mm surveys. Lensing was originally seen as a tool for gaining information on the fainter end of the source counts, and surveys were targeted at massive clusters to benefit from the strong magnifications they produce (Smail et al. 1997; Blain et al. 1999; Cowie et al. 2002; Knudsen et al. 2008; Zemcov et al. 2010; Hsu et al. 2016). In more recent years, strong lensing due to individual galaxies has also been exploited to reveal the high redshift dusty star-bursts in exquisite detail, with wide area FIR/sub-mm surveys producing large samples of such strongly lensed systems (e.g. Negrello et al. 2010; Vieira et al. 2010; Cañameras et al. 2015; ALMA Partnership et al.

2015; Swinbank et al. 2015; Negrello et al. 2017; Zhang et al. 2018; Jarugula et al. 2019; Yang et al. 2019).

The reason that lensing has been so helpful to sub-mm astronomy is that the conditions for producing lots of lensing signal in the population are optimal, with steep sub-mm source counts and the population of SMG predominantly residing at high redshifts. (e.g. Blain 1997; Negrello et al. 2007; Lapi et al. 2012). However, this boon from the lensing phenomena comes with a price for those simply interested in the statistics of the galaxy populations. Lensing is so ubiquitous that it must be considered a possibility that any SMG which has a luminosity $L_{\text{IR}} > 10^{13} L_{\odot}$ is being lensed, even if the lens itself is not visible – either being too high redshift, or because the lensing is from intervening large scale structure such as a group or cluster (e.g. Rowan-Robinson et al. 1991; Graham & Liu 1995; Harris et al. 2012; Bussmann et al. 2015; Nayyeri et al. 2017).

Statistical analyses comparing the positions of high redshift sub-mm galaxies and lower redshift populations re-

* E-mail: DunneL6@cardiff.ac.uk

ported cross-correlation signals right from the earliest days, but with only marginal statistical significance given the small areas imaged (Almaini et al. 2005; Aretxaga et al. 2011; Wang et al. 2011). With the wide area submillimeter *Herschel*-ATLAS survey (Eales et al. 2010) and complementary optical spectroscopic survey from GAMA (Driver et al. 2011), a leap was made in the detection and characterisation of this signal as being that of cosmological lensing bias: the lensing effect from the foreground large-scale structure on the background high redshift galaxy population (González-Nuevo et al. 2014, 2017). The lensing is not thought to be strong, with magnification factors of 1.0–1.5 but it nevertheless changes the statistics and potentially imprints the correlation function of the high- z galaxies with the signal from the lower redshift structures which are magnifying them.

The two regimes of lensing, strong (from clusters or single galaxies producing arcs, rings or multiple images), and weak (from large scale foreground structure which produces the cosmological lensing bias at large angular scales seen in Hildebrandt et al. (2013) and González-Nuevo et al. (2014, 2017)), are reasonably well recognised and understood. There is, however, a third regime intermediate between strong and weak which has only recently been identified, and which is the subject of this paper. This regime, spanning scales of a few arcsec to a few tens of arcsec, produces an upturn in the cross-correlation signal between low redshift populations and $z > 1.5$ SMG. Statistical evidence for this intermediate lensing regime has been highlighted in the angular cross-correlation study of H-ATLAS high redshift sources with low redshift optical galaxies González-Nuevo et al. (2017). Pre-dating this study, it was also hypothesised as a possible explanation for a puzzling trend noted during the H-ATLAS cross-identification studies (Smith et al. 2011; Bourne et al. 2016) in which H-ATLAS sources with red sub-mm colours (aka high redshift) and SDSS optical galaxies had a broader cross-correlation peak in angular scale compared to H-ATLAS sources with blue sub-mm colours (aka low redshift) and the same SDSS optical galaxy catalogue (Bourne et al. 2014). Both statistical signals are thought to be due to the same effect: moderate lensing by halos hosting galaxy groups or very massive centrals with a number of satellite dwarfs. The lensing is not strong enough to create distortions in the sub-mm images, but should have amplifications in the range $\mu = 1 - 3$ (González-Nuevo et al. 2017). The lensing occurs on scales similar to the profile of the large halo or group of halos, so is at 3–15'' rather than the $< 3''$ expected for strong galaxy-galaxy lensing, or the $> 1'$ scales of weak lensing by the large scale structure.

In this paper we describe the serendipitous detection of a large over-density of SMG within 13'' of $z = 0.35$ galaxies. The galaxies were originally targeted by ALMA as a small, but homogeneously selected sample in the relatively local Universe, which could provide a calibration of gas tracers in dust, CO and [C I]. We believe that this is a first detection of the intermediate lensing regime in individual sources.

In Section 2 we describe the sample, observations and data reduction. In Section 3 we present the very surprising result that there is an over-density of a factor 4–6 in the number of SMG found in these fields compared to blank field surveys. In Section 3.2 we investigate a lensing mechanism for this over-density and in Section 4 we discuss the wider

implications of flux boosting in *Herschel* surveys. Throughout we use a cosmology with $\Omega_m = 0.308$, $\Omega_\Lambda = 0.692$ and $H_0 = 67.8 \text{ km s}^{-1} \text{ Mpc}^{-1}$ (Planck Collaboration et al. 2016).

2 SAMPLE AND DATA

The aim of the proposed ALMA observations was to map CO, dust and [C I]($^3\text{P}_1$ - $^3\text{P}_0$) in a sample of 250 μm selected galaxies to make a calibration of molecular gas mass based on three tracers. Full details of the project and results from the dust, CO and [C I] imaging are presented in a companion paper, Dunne et al. *submitted*. The sample was selected from the *Herschel*-ATLAS (Eales et al. 2010) Science Demonstration Phase (SDP) equatorial field at R.A. 09h. H-ATLAS is the *first unbiased survey of the dust content of local galaxies*, covering 660 sq. deg and sensitive to the cold dust component which dominates the mass of dust in galaxies. It was the widest area extragalactic survey carried out with the *Herschel* Space Observatory (Pilbratt et al. 2010), imaging 600 deg 2 in five bands centred on 100, 160, 250, 350 and 500 μm , using the PACS (Poglitsch et al. 2010) and SPIRE instruments (Griffin et al. 2010). The *Herschel* observations consist of two scans in parallel mode reaching a 4σ point source sensitivity of 28 mJy beam $^{-1}$ at 250 μm . The angular resolution is approximately 9'', 13'', 18'', 25'' and 35'' in each of the five bands. While the original sample for the proposal was selected from the SDP public release catalogue described in Rigby et al. (2011) to have $S_{250} > 5\sigma$ and a reliable optical identification with spectroscopic redshift from Smith et al. (2011), we update the *Herschel* photometry and optical parameters in this paper to those from the H-ATLAS DR1 release (Valiante et al. 2016; Bourne et al. 2016).

In order to fulfil the requirements of the ALMA Cycle 1 call where only Band 7 and Band 3 were available, all the sources had to be within 12 degrees of each other on the sky and had to be observed using no more than five tunings, resulting in a very limited redshift range around $z = 0.34 - 0.36$ that fulfilled these requirements. We selected *all* the H-ATLAS SDP sources within this redshift range, making this sample of twelve representative of sources from a blind 250 μm selected sample at $z \sim 0.3 - 0.4$. Details of the sample are given in Table 1.

The H-ATLAS DR1 photometry we use is given in Table 2, to which we add the ALMA 850 μm fluxes for the $z = 0.35$ sources which are taken from Dunne et al. *submitted*. We use the SPIRE matched filter photometry from the DR1 release, as these are all point sources and this is the most likely estimate of their flux (Maddox & Dunne 2020). In the case of PACS, the LAMBDA algorithm of Wright et al. (2016) produces, in our opinion, a more robust measure of the PACS fluxes and errors as instead of using a top hat aperture, it convolves the optical r-band aperture with the PACS PSF and so measures flux in a PSF-weighted aperture. However, in 5 cases there was a significant difference between the two catalogues, so we returned to the original H-ATLAS PACS maps and remeasured our own photometry (indicated with M in Table 2). Spectroscopic redshifts and UV-22 μm photometry are provided by the Galaxy and Mass Assembly (GAMA) survey (Driver et al. 2011; Liske et al. 2015; Wright et al. 2016).

The sample has a narrow range of $L_{\text{IR}} = 1.2 \times 10^{11} -$

Table 1. Properties of the target $z = 0.35$ galaxies.

H-ATLAS IAU	SDP name	GAMA ID	R.A hh:mm:ss.s	Dec. dd:mm:ss.s	z	S_{250} (mJy)	r_{pet} (mag)	SMG
J090506.2 + 020700	163	347099	09:05:06.1	02:07:02.2	0.345	107.6	18.8	N
J090030.0 + 012200	1160	301774	09:00:30.1	01:22:00.2	0.353	48.4	19.15	Y
J085849.3 + 012742	2173	376723	08:58:49.4	01:27:41.0	0.355	46.2	18.71	Y
J091435.3 - 000936	3132	575168	09:14:35.3	-00:09:35.6	0.359	40.6	19.02	N
J090450.0 - 001200	3366	574555	09:04:50.1	-00:12:03.0	0.354	40.3	18.93	Y
J090707.7 + 000003	4104	210168	09:07:07.9	00:00:02.1	0.350	46.2	19.38	Y
J090845.3 + 025322	5323	518630	09:08:45.3	02:53:20.0	0.353	28.6	18.98	N
J090658.6 + 020242	5347	382441	09:06:58.4	02:02:44.7	0.347	32.7	19.01	Y
J090444.9 + 002042	5526	600545	09:04:44.9	00:20:48.2	0.342	31.2	19.23	N
J090844.8 - 002119	6216	204249	09:08:44.8	-00:21:18.0	0.352	36.2	18.75	N
J090402.3 + 010800	6418	372500	09:04:02.2	01:07:58.2	0.347	31.6	18.96	Y
J090849.4 + 022557	6451	387660	09:08:49.5	02:25:56.9	0.353	33.7	19.08	N

Notes: Positions and redshifts refer to the optical properties of the XID in Bourne et al. (2016). $250\mu\text{m}$ flux is from the H-ATLAS DR1 release (Valiante et al. 2016). r_{pet} is the SDSS r-band petrosian magnitude from GAMA. SMG indicates whether a background high-redshift SMG is detected at $> 5\sigma$ in the Band 7 field.

Table 2. FIR photometry for the $z = 0.35$ galaxies from Herschel-ATLAS DR1 and our ALMA measurements.

Source	S_{100}	σ_{100}	S_{160}	σ_{160}	S_{250}	σ_{250}	S_{350}	σ_{350}	S_{500}	σ_{500}	S_{850}	σ_{850}
163	73.9	20.7	102.1	24.1	107.6	7.3	50.7	8.1	23.9	8.5	3.05	0.34
1160 [†]	49.8	17.5	57.1	19.7	48.4	7.2	32.4	8.1	21.6	8.7	0.54	0.12
2173 [†]	59.0 ^M	34.0	68.0 ^M	38.0	46.2	6.5	21.4	7.5	11.1	7.8	0.74	0.20
3132	64.3 ^M	26.5	65.1 ^M	20.0	40.6	6.4	23.6	7.4	13.1	7.8	0.95	0.29
3366 [†]	19.7	24.5	114	37.6	40.3	7.3	26.3	8.0	16.5	8.8	0.42	0.019
4104 [†]	77.9	17.6	53.3	26.4	46.2	7.2	28.3	8.1	12.1	8.8	0.92	0.24
5323	28.6	7.1	30.0	8.0	9.6	8.4	0.89	0.24
5347 [†]	33.0	41.2	68.0	17.7	32.7	7.5	29.8	8.2	17.2	8.7	1.84	0.35
5526	62.0 ^M	32.6	56.9 ^M	40.7	31.2	7.3	20.0	8.2	-10.7	8.5	1.11	0.27
6216	35.0 ^M	36.6	34.0 ^M	40.7	36.2	7.3	19.9	8.1	3.8	8.8	1.49	0.25
6418 [†]	40.4 ^M	19.8	27.0 ^M	33.3	31.6	7.3	18.5	8.0	16.6	8.4	1.06	0.32
6451 [†]	69.4	41.7	59.5	47.8	33.7	7.3	29.7	8.2	19.5	8.6	0.88	0.19

Notes: Fluxes are all in mJy. [†] indicates that there is evidence for contamination of these *Herschel* fluxes by high- z SMG in the beam. Before SED fitting we subtract from these fluxes the estimated contamination from high- z SMG listed in Table 9. See S 4 for details. ^M indicates a PACS flux re-measured from the DR1 maps.

$6 \times 10^{11} L_{\odot}$, making them far more ‘typical’ of galaxies at this redshift than previous very luminous IR samples (e.g. Combes et al. 2011). The stellar masses are in the range $M_{*} = 4 \times 10^{10} - 3 \times 10^{11} M_{\odot}$. Comparison of the $250\mu\text{m}$ selected sources with other optically selected galaxies at the same redshift from the GAMA survey (Driver et al. 2016; Baldry et al. 2018) in Figure 1 shows that the $250\mu\text{m}$ selection picks out the leading edge of the optical cloud of galaxies, i.e. only the most massive or highly star forming galaxies at this redshift make it above the *Herschel* flux limit.

2.1 ALMA observations and data reduction

Observations in the 3-mm band were made in Dec 2013 during Cycle 1 with the ALMA Band 3 receiver tuned to 85 GHz. The total integration time for all 12 sources plus calibrations was 96 minutes giving $\sigma_{\text{cont}} = 40\mu\text{Jy}$ per synthesised beam of $\theta_3 = 2.4'' \times 1.8''$. The $[\text{C}]\text{P}_1\text{--}^3\text{P}_0$ observations were split across Cycles 1 and 2 spanning a period from December 2013–January 2015, and using 4 tunings of the Band 7 receiver in the range 362–367 GHz. The total integration time was 10.7 hours giving

$\sigma_{\text{cont}} = 65 - 90\mu\text{Jy beam}^{-1}$ with $\theta_7 = 1.03'' \times 0.64''$. A list of the observations is presented in Table 3.

The 3-mm Band 3 data were reduced manually using the Common Astronomy Software Applications (CASA) v4.5 package (McMullin et al. 2007) with flux calibration from Mars and the phase/bandpass calibrator J0854+2006. The two measurement sets (MS), which were observed on the same day, were concatenated before imaging having been set to a common flux scale. We created spectral line cubes using TCLEAN in CASA in 100 km s^{-1} channels, natural weighting was used in order to maximise signal-to-noise. We also imaged in spectral line mode, the three TDM windows which were used for the continuum at 3-mm. We did so in order to search for emission lines in the high redshift SMG discovered in our fields. The noise in these cubes was $0.4\text{--}0.5 \text{ mJy beam}^{-1}$ respectively.

The Band 7 observations were set up in four Scheduling Blocks (SBs) where the sources that could share a single tuning were grouped into a given SB. Due to some of these data being taken during Cycle 2, the newer CASA v4.7 was used for the reduction. Some of the MS were calibrated using the ALMA pipeline, while others were reduced manually, depending on how the data were delivered. All MS were checked and reprocessed allowing for tailoring of the

Table 3. Details of the ALMA observing for Band 7.

SB name	ν_{obs} (GHz)	Date	MS	N_{ant}	t_{int} (min)	p.w.v (mm)	Phase Cal.	Flux Cal.	B.P.	σ_{cont} (μJy)	
LowV	365.2	14.12.13	X1644	26	50.2	0.84	J0854 + 20	Pallas	J1058 + 01	90	0.86 – 1.2
HighV	363.5	26.12.14	X2543	40	33.3	0.84	J0909 + 01	Ganymede	J0825 + 03	..	0.84 – 1.1
		21.2.14	X3e5	28	35.3	0.64	J0914 + 02	Ganymede	J0825 + 03	65	
		2.1.15	X1e75	39	34.2	0.69	J0909 + 01	Callisto	J0825 + 03	..	
		2.1.15	X2365	39	15.4	0.82	J0909 + 01	Ganymede	J0825 + 03	..	
		2.1.15	X2606	39	34.2	0.91	J0909 + 01	Ganymede	J0909 + 01	..	

σ_{cont} is the average rms in $\mu\text{Jy}/\text{beam}$ for the continuum.

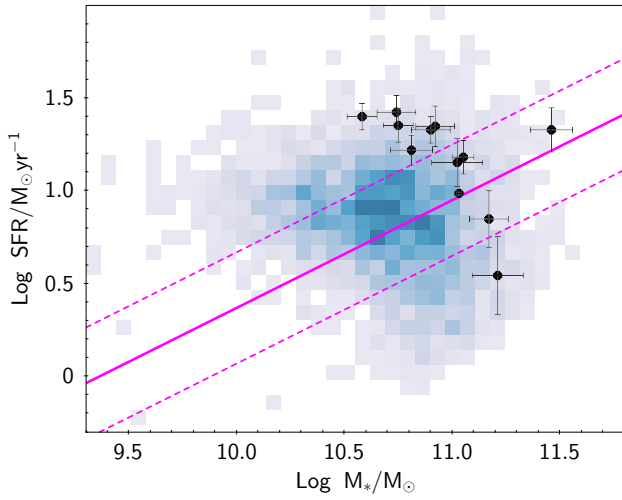


Figure 1. Star Formation Rate (SFR) versus stellar mass for the $z = 0.35$ sources with the best fit Main Sequence (solid) and ± 0.3 dex intrinsic scatter (dashed lines) from [Speagle et al. \(2014\)](#). The coloured region represents the density of galaxies in the range $0.33 < z < 0.36$ with $\log \text{sSFR} > -11.0$ and $\sigma_{M_*} < 0.15$, $\sigma_{\text{SFR}} < 0.2$ from GAMA ([Driver et al. 2016](#)). This also shows the effect of the $250\mu\text{m}$ selection at this redshift, where we sample the leading edge of the distribution in SFR- M_* for the optical selection $r < 19.8$ from GAMA.

calibration to the specific issues in this data-set. For example, there are several atmospheric lines which are evident in the Band 7 data and so the pipeline calibration was modified to avoid flagging the system noise temperature (T_{sys})¹ response in some cases, and to output the data-set from the pipeline after the generation of the water vapour radiometer (WVR) and T_{sys} calibration tables. The data were then manually processed from that stage so that the atmospheric lines could be flagged in the bandpass calibrator and the bandpass solutions interpolated in these regions. Additional manual flagging was also applied where required.

Imaging in B7 between 350-360 GHz was performed using the CASA task TCLEAN with a Hogbom algorithm, using

¹ T_{sys} is a representation of the noise from both receivers and the atmosphere and is used to calculate initial weightings of the visibility data. In spectral regions of high atmospheric opacity there is a resultant spike in T_{sys} with frequency, and as these spikes are genuine reductions in sensitivity in this part of the spectrum they should not be clipped from the T_{sys} calibration curves which are used in future calibrations.

natural weighting. Sources above 4σ in the dirty image were masked and lightly cleaned (to 1.5σ).

During imaging, it was obvious from the dirty images that there were point sources in the fields of at least half of the targets, which were not associated with the $z = 0.35$ system. They were very obvious as they were usually much higher SNR than the target source itself. We did not run any source extraction algorithms, but merely noted when a bright point source was present in the imaging (as it needed to be cleaned) and later on went back to analyse these serendipitous detections. To check the robustness of these sources, we made two analyses. Firstly, we noted the flux and SNR of each SMG in all of the different Execution Blocks (EB) in which they were observed. Four of the SMG were observed in four execution blocks, three on the same night and another taken almost a year earlier. The other three SMG were observed in two execution blocks, taken roughly one year apart. Table 4 shows the SNR ratios for each SMG in each of the EB imaged separately. In every case, the SMG is present in each of the EB going into the final data-set. Obviously, those EB with shorter integration times, poorer weather or fewer antennae have lower SNR for the SMG, but nevertheless they are positive peaks above 3σ in each of the separate observations. The resulting sample of seven robust SMG are all those detected with $\text{SNR} > 5\sigma$, (in fact all of them have $\text{SNR} \geq 6\sigma$). There are also two peaks just below the 5σ threshold, which are listed as candidate sources in Table C1 but are not considered further in the analysis. The second test that we did was to count the negative and positive peaks in the final images. The results are shown in Table 5, and in no cases are any negative peaks at or below -5σ found. Furthermore, four of the SMG (with the lowest SNR) also are found to have K-band counterparts in infrared imaging from the VIKING survey ([Edge et al. 2013](#)). This combined with the detection of all SMG in all the individual EB confirms that this is a very robust set of sources. Given the number of beams in the surveyed area, we expect a false detection rate at 5σ of 0.002 sources in this sample.

2.2 Flux and size measurements

We measured the fluxes of the source in two ways, firstly by fitting a Gaussian and taking the peak flux from the CASA task IMFIT, and secondly, by fitting a Gaussian in the (u, v) plane using UVMODELFIT ([Martí-Vidal et al. 2014](#)). We used both methods as a check for systematics, and also because very little size information can be derived in the image plane for sources which are smaller than the synthesised beam. Fitting in the (u, v) plane is more direct and

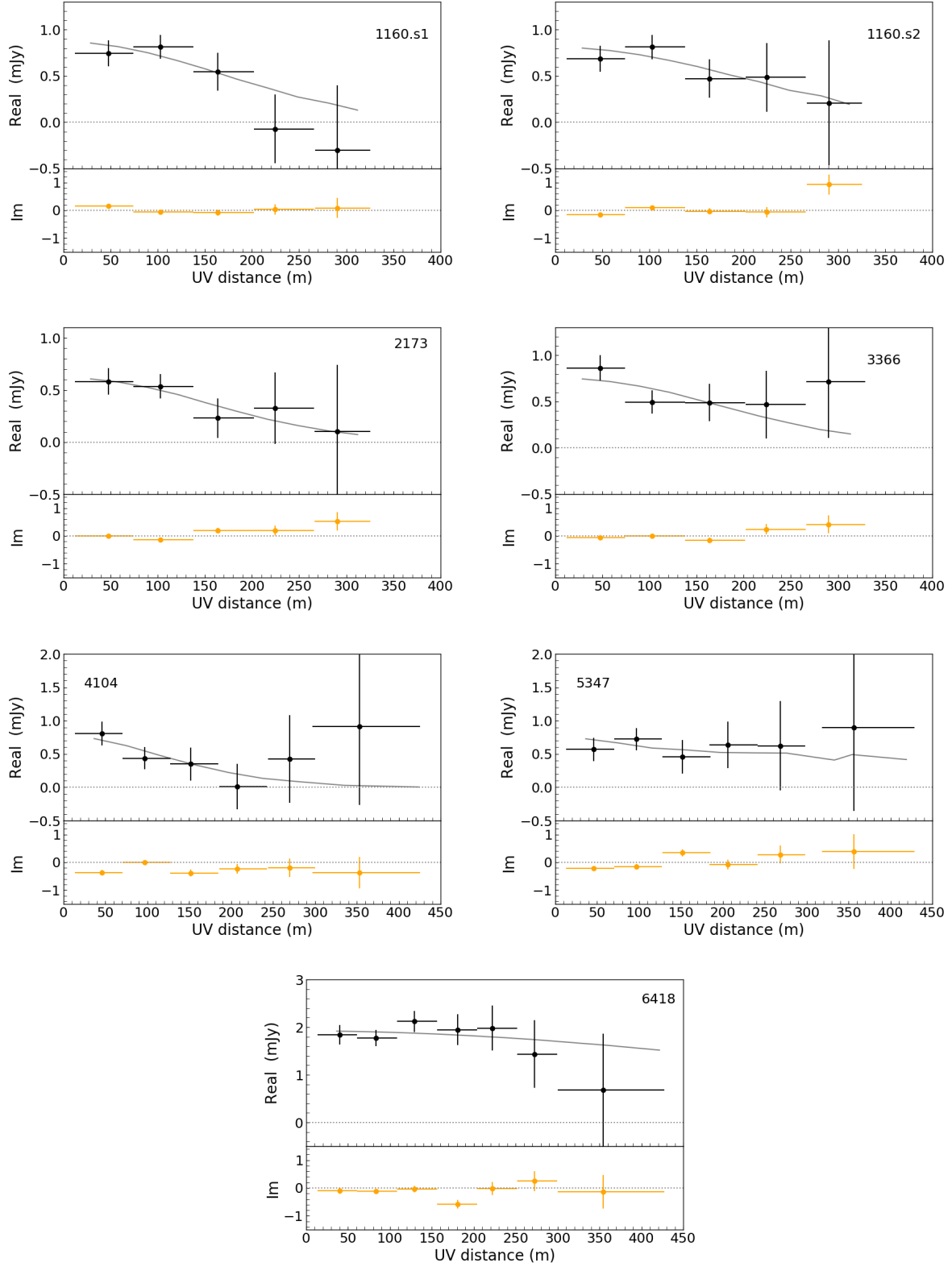


Figure 2. The binned u, v data with Gaussian fits from UVMODELFIT over-plotted for the 7 SMG. Details of the fit parameters are in Table 4. In all cases the data were averaged in frequency to one point per spectral window and in time by 30 seconds before fitting. Points are averaged in radial bins of $u-v$ distance using the weights from CASA. Error bars on points are estimated from the scatter of the data points within each bin (this is comparable but slightly larger than using the inverse square-root of the sum of the weights).

Table 4. Robustness check of detection of SMG in the individual data-sets.

EB	Typical rms ($\mu\text{Jy beam}^{-1}$)	Signal-to-noise ratio of the SMG in each individual EB.						
		1160.s1	1160.s2	2173	3366	4104	5437	6418
X3e5	136	5.7	3.4	3.8	5.5			
X1e75	100	7.9	8.4	5.3	4.6			
X2365	171	3.5	4.6	3.6	3.9			
X2606	170	4.8	3.1	3.8	5.5			
X1644	163					3.7	3.5	12.8
X2543	103					5.0	7.2	15.2

Notes: This table records the SNR of each SMG in all of the individual Execution Blocks. In every case, there is a positive source at the same position in each EB. Sources brighter than 4σ were cleaned, there is no significant change in properties with or without cleaning applied (except for the brightest source 6418, which is bright enough to self calibrate).

Table 5. Results of inverting the images for the SMG fields

Field	Number of peaks in given signal-to-noise range				
	(< -5)	(-5, -4)	(4, 5)	(5, 6)	(> 6)
1160	0	1	1 ^t	0	2
2173 ^K	0	0	1	0	1
3366 ^K	0	1	1	0	1
4104 ^K	0	0	1 ^t	1	0
5347 ^K	0	0	0	0	1
6418	0	0	0	0	1

Notes: Number of negative peaks more significant than -4σ compared to the positive peaks as a simple test of source robustness. There are no negative peaks at $< -5\sigma$ while there are 7 peaks at $> +5\sigma$. A ^K symbol at the field name indicates that the SMG has a K-band counterpart. A ^t symbol indicates that this positive peak is the target low-z galaxy.

avoids the uncertainties associated with the non-linear process of deconvolution in the imaging. The fluxes and sizes are reported in Table 6, the first row for each source lists the parameters from the (u, v) fitting while the second row lists the peak flux reported by IMFIT (equivalent to a point source flux).

For the u, v fitting we averaged the data across each spectral window and in intervals of 30 seconds, both of these do not lead to significant band-width or time smearing for this ALMA band. We then fixed the phase centre to be the position of the SMG and fitted with a 2D Gaussian where the flux S_{fit} , position, major axis size θ_{m1} and position angle (pa) were free parameters. The sixth parameter, the axial ratio b/a , was found to be unconstrained by fitting, tending to an axial ratio approaching zero, usually aligned with the pa of the beam. This tendency produces a bias in the values for S_{fit} and θ_{m1} , both of them being maximised. Since an axial ratio approaching zero is not physical, we have used a constrained fit as described in Appendix A.

The major axis source sizes fitted in this way range from $0.1\text{--}0.6''$, and the average value of the circularised size is $\theta = 0.36''$, which translates to $R_e \sim 2$ kpc for $z = 1 - 3$. This value is comparable to other studies of SMG in which the sources were much better resolved, and so this gives a measure of confidence in our fluxes and sizes (Simpson et al. 2015; Hodge et al. 2016; Oteo et al. 2016; Rujopakarn et al. 2016; Fujimoto et al. 2017; Tadaki et al. 2017; Lang et al. 2019). The limit for reliable size determination in interferometric observations is given by Martí-Vidal et al. (2012), and using their Eqn.7 with $\beta = 0.75$ and $\lambda_c = 3.84$ the 2σ limit to the minimum size which could be reliably measured for our sources is listed in Table 6. Two of the sources have

fit results which are comparable or slightly smaller than this limit and so for these we quote the 2σ upper limit to their sizes (SDP.5347, SDP.6418). Figure 2 shows the azimuthally binned (u, v) data, together with the model representing the best fit for the median likelihood axial ratio, $a/b = 0.75$.

There is a small difference between the peak flux derived from the fit to the imaging and the 2D fit to the (u, v) data described above (where the size is a free parameter), such that the integrated fluxes from the fits with finite size are higher than the point source fluxes. This is expected, a point source flux estimate will always underestimate the flux of a source with a finite size, the degree of underestimation being dependent on the ratio of the source area compared to the beam area. To be certain that this distinction (which for the most part is not highly significant, the most significant being SDP.4104.s1 at 2.6σ) does not bias our subsequent study of the number counts, we checked that repeating the analysis with the peak fluxes instead of the integrated fluxes does not change the conclusions.

All fluxes and errors were then corrected for the primary beam attenuation using the primary beam model output by CASA during the CLEAN stage. The fluxes presented in Table 6 are corrected for the primary beam, and the correction made for the primary beam attenuation is also listed there.

3 AN OVER-DENSITY OF HIGH REDSHIFT SMG AROUND MASSIVE GALAXIES AT $Z = 0.35$

Half of the fields observed contained one or more serendipitously detected high redshift SMG. In total 7 SMG are confidently detected at $S_{850} > 5\sigma$ in 6 fields. The details of these SMG are given in Table 6 and images are shown in Figure 3.² We give detailed notes on each source in Appendix B.

We looked for counterparts to these SMG in VIKING K-band imaging (Edge et al. 2013; Driver et al. 2016), which is the deepest ancillary data-set in this region, and find K-band counterparts to four out of seven SMG. Counterparts or upper limits to the K-band magnitudes are noted in Table 6 and the K-band images are shown also in Figure 3.

² The ALMA images have not been corrected for the variable attenuation of the primary beam. A source nearer to the edge of the map will have a higher flux at the same signal-to-noise contour level compared to a source in the centre. This is due to the fact that the primary beam attenuation increases the noise as a function of radius from the pointing centre.

Table 6. Serendipitous robust SMG found in the fields surrounding $z = 0.35$ H-ATLAS sources.

SMG	R.A.	Dec.	S_{850} (mJy)	SNR	decon. size "	θ_{\min} "	r	P.B.	K_{AB}
1160.s1	09:00:30.40	+01:22:02.90	1.06 ± 0.08 0.91 ± 0.08	11.4	$0.4 \pm 0.09 \times 0.3 \pm 0.08$	(0.20)	5.0	0.82	> 21.32
1160.s2	09:00:30.17	+01:22:12.44	4.05 ± 0.40 3.55 ± 0.32	11.1	$0.34 \pm 0.1 \times 0.26 \pm 0.09$	(0.21)	12.5	0.20	> 21.32
2173.s1	08:58:49.26	+01:27:48.3	1.05 ± 0.11 0.76 ± 0.12	6.3	$0.44 \pm 0.12 \times 0.33 \pm 0.10$	(0.28)	7.5	0.59	21.45 ± 0.03^1
3366.s1	09:04:50.20	−00:12:00.10	0.82 ± 0.073 0.74 ± 0.067	11.0	$0.39 \pm 0.10 \times 0.29 \pm 0.09$	(0.21)	3.4	0.91	19.02 ± 0.03^2
4104.s1	09:07:07.47	+00:00:06.94	1.33 ± 0.17 0.78 ± 0.13	6.0	$0.6 \pm 0.19 \times 0.45 \pm 0.10$	(0.29)	7.2	0.58	20.65 ± 0.12
5347.s1	09:06:58.65	+02:02:51.95	1.30 ± 0.21 1.18 ± 0.16	7.4	$0.25 \pm 0.22 \times 0.19 \pm 0.12$	< 0.26	8.0	0.52	21.55 ± 0.31
6418.s1	09:04:02.38	+01:07:53.4	2.56 ± 0.09 2.52 ± 0.07	23.7	$0.106 \pm 0.095 \times 0.08 \pm 0.065$	< 0.15	6.0	0.75	> 21.32

Name of SMG, R.A. and Dec., S_{850} : 850 μ m flux from two methods. First row from fitting in the (u, v) plane using UVMODELFIT, where the size fitted is also quoted. Second row is a minimum flux estimate, using the peak of a Gaussian fitted to the image with IMFIT. SNR: signal-to-noise ratio from the peak pixel and rms map noise. θ_{decon} : Deconvolved size from the (u, v) fitting (see text for details). θ_{\min} is the minimum reliable size which can be measured given the SNR of these sources using the formalism of Martí-Vidal et al. (2012). Where the fitted size is comparable to or smaller than this size, we quote the 2σ size limit in this column. r : distance of the SMG to the centre of the target $z = 0.35$ galaxy in arcseconds. P.B.: the primary beam correction which has been applied to these fluxes. K_{AB} : K-band magnitude (AB) or 3σ limit at the position of the SMG using VIKING data. ¹ flux measured in a $2''$ aperture on VIKING image created by Driver et al. (2016). ² flux measured on VIKING image using SeXtractor to deblend the red object from the foreground and using MAG AUTO.

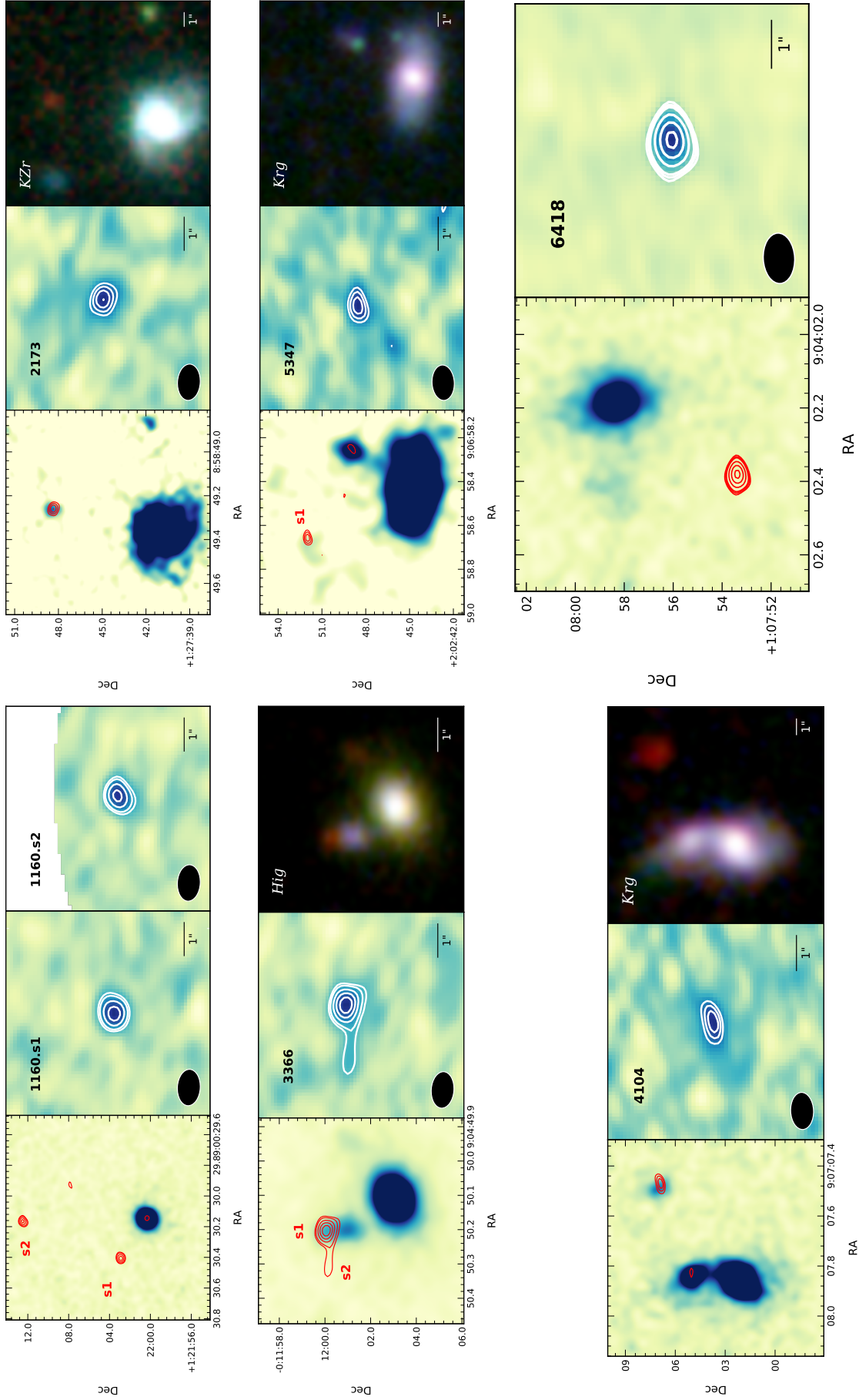


Figure 3. Panels for each field containing SMG, showing from left to right: (Left) K-band image from VIKING (Edge et al. 2013) with ALMA 850 μm contours overlaid in red, starting at 4σ . The stretch is made to highlight any faint K-band emission from the position of the SMG. (Centre) ALMA 850 μm image zoomed in and centred on the SMG(s) with contours starting at 4σ . Negative contours are shown starting at -4σ as black dashed lines. (Right) For the four fields with K-band emission at the SMG position we show colour composites from VST Kilo Degree Survey (de Jong et al. 2017) and VIKING which highlight the very red colours of those sources. For SDP.1160 and SDP.6418, there is no sign of any K-band emission down to the VIKING 3σ limit of $K_{AB} = 21.3$.

3.1 Over-density calculation

In order to estimate $850\mu\text{m}$ number counts from this sample, we must first sum the area observed in which a given source could have been detected with a $\text{SNR} > 5\sigma$.³

The sensitivity of our ALMA pointings is not uniform, due to the tapering effect of the primary beam. We created a noise-map for each of the twelve fields to capture this radially varying noise level by multiplying the primary beam attenuation image by the rms noise measured in a source free region of the flux image before primary beam correction. This gives us a map of the average noise as a function of radius for each field. For the 12 noise-maps (one for each of the 12 target fields), we sum the area over which we could have detected each source at its peak measured flux at a significance level of 5 times the local noise. The surface density of a source of a given flux is then simply the inverse of this area.

There are currently only two published measures of the faint number counts at $850\mu\text{m}$ using ALMA, those from [Oteo et al. \(2016\)](#) (henceforth O16) who used the ALMA calibrator data-set to produce a direct and unbiased measurement of the $850\mu\text{m}$ counts with ALMA down to sub-mJy levels, and more recently those from [Bethérmin et al. \(2020\)](#) (henceforth B20) who present serendipitous $850\mu\text{m}$ sources detected in fields targeted at $z > 4$ [CII] emitters. Both of these analyses were performed in comparable ways to ours, with a $\text{SNR} \geq 5$ selection criteria and measurement of the source fluxes using integrated 2D Gaussian fitting (although both of these works used image plane rather than (u, v) fitting).

With such small numbers, we cannot hope to make an accurate measure of the counts since our uncertainties are always going to be dominated by counting statistics. Our aim in this paper is to determine with some confidence level whether we are seeing a statistical over-density of SMG in these fields containing massive $z = 0.35$ galaxies. In order to do this, we will compare our results to those of O16 and B20, exploring the impact of different criteria for the flux measurement, and the magnitude of completeness corrections. In each comparison, we utilise the results of simulations by O16 and B20, who provide completeness estimates for samples similarly selected with $\text{SNR} \geq 5$.

To begin with, we provide short summary of the methods used by each of the comparison counts analyses and highlight any points of difference.

O16 measure fluxes by fitting 2-D Gaussians to the image plane and using the integrated flux, although sources are *detected* with an initial peak pixel flux requirement $\text{SNR} \geq 5$. The beam-sizes are $0.4 \times 0.3''$ for 8 sources, and $1 \times 0.6''$ for 3 sources. Their simulations consist of point sources injected into the visibilities and recovered using their normal procedure in a uniform manner. These simulations demonstrate that completeness reaches ~ 80 percent at $\text{SNR} = 6$ for catalogues with a 5σ detection threshold ([Oteo et al. 2016](#)). This is likely to be the best case scenario as the simulated sources are all point-like while the real sources would be expected

to have finite sizes (particularly in the cases with smaller synthesised beams).

B20 also measure their fluxes using integrated 2-D Gaussian fitting in the image plane, having detected the source based on a peak pixel $\text{SNR} \geq 5$. The beam sizes are typically $1.2 \times 0.8''$. Despite having a larger beam size compared to O16 (and other studies which have measured the sizes of SMG), [Bethérmin et al.](#) infer that the sources are marginally resolved by their $\sim 1''$ resolution imaging, based on their finding that the ratio of the integrated flux to the peak pixel flux is significantly greater than unity. While no size measurements are explicitly mentioned in B20, we have used their Eqn.4 and Fig. 4 which relate the peak/integrated flux ratio to $\Omega_{\text{source}}/\Omega_{\text{beam}}$, to estimate the average implied *deconvolved* size of their sources as $\sim 0.72''$. The beam size for our data-set is similar to B20, and yet our (u, v) plane analysis indicates that our sources have a size $< 0.52''$, with a mean of $0.31''$, comparable to the average size measured for SMG in the literature ($\sim 0.3''$ [Lang et al. 2019](#) and references within). The upper range of the reported sizes in the literature is $R_e \sim 4.5$ kpc ([Rujopakarn et al. 2016](#)), which translates to $\text{FWHM} \sim 0.68''$ for redshifts greater than unity. It is note-worthy that the *average* size of $\sim 0.72''$ implied by the B20 analysis of the peak-to-integrated flux ratio is larger than the upper end of the range found in all of the rest of the SMG literature. This has implications for our comparison of number counts, because B20 perform their simulations of completeness including size as a variable, finding that the larger sources have much lower completeness at a given detection signal-noise ratio. In the B20 simulations, sources are injected directly into the image plane rather than into the (u, v) visibilities as in O16. As a result, the completeness corrections derived by B20 are very different at the detection threshold $\text{SNR} = 6$ compared to those produced in O16 (80 percent for O16, 25–30 percent for a source with the average size of $0.72''$ implied by Fig. 4 in B20). Thus, for *a given set of sources, detected and measured in identical ways* the [Bethérmin et al.](#) method would produce counts a factor ~ 3 larger than using the [Oteo et al.](#) method, solely due to the size dependence of the completeness correction, and the interpretation of the peak/integrated flux ratio as a size measurement by [Bethérmin et al. \(2020\)](#).⁴

Having contrasted the methods and data-sets used we now contrast the number counts quoted by each survey. O16 use a fitting formula which describes the counts all the way from 0.4 mJy to the bright-end measured with ALMA by [Simpson et al. \(2015\)](#).

$$N_{850}(> S) = N_0 \left[\left(\frac{S}{S_0} \right)^\alpha + \left(\frac{S}{S_0} \right)^\beta \right]^{-1}$$

where $N_0 = 46.4 \text{ deg}^{-2}$, $S_0 = 8.4 \text{ mJy}$, $\alpha = 1.9$ and $\beta = 10.5$. B20 do not fit a function to their counts but present the cumulative counts in bins, which we logarithmically interpolate to the flux values of interest to us.

The counts for the two analyses are presented in Table 7, where we are listing the ‘robust $z < 4$ ’ counts from B20 to

³ Given that our least significant source is actually 6σ , going down to 5σ provides a more generous area and therefore lower density estimate than if we had stated a cut off at 6σ .

⁴ We note that B20 do not present any discussion of the impact of the source size on the derivation of the number counts, or the implications of their sample appearing to show such large extended sizes.

ensure we are not including any over-density associated with the target sources. The B20 counts are higher by a factor 1.7 – 2.5 compared to those of O16.⁵ We must acknowledge two factors in the way the counts have been obtained which may make the B20 counts tend to be higher than those of O16. Firstly, the fields used to derive the B20 counts are targeted at high-redshift galaxies with high star formation rates. They are therefore biased sight-lines as galaxies are clustered, thus an extra signal at the same redshift might be expected. For this reason, we compare to the robust $z < 4$ counts from B20 which will have removed any contamination from clustered sources at the same redshift as the targets. There is, however, another more subtle bias which may be present, which is in fact the topic of this paper. Magnification lensing bias means that the pre-selection of fields containing bright, high redshift objects increases the probability of sight-lines containing more large-scale structure; which weakly lenses the high redshift sources making them appear slightly brighter, and hence more likely to be selected as targets. Dusty galaxies present in any foreground structures could create a bias to higher number counts. Secondly, as mentioned earlier, the completeness corrections adopted by each study are very different, with the size-dependent completeness correction of B20 leading to much higher corrections on average for their sources compared to the point source estimates of O16.

Due to this uncertainty, we proceed to calculate our over-densities with three different assumptions about the completeness correction:

- (i) No completeness correction applied – gives a minimum estimate of the counts for our fields.
- (ii) Completeness correction following O16 simulations, meaning our two sources with $\text{SNR} \sim 6$ (SDP.2173, SDP.4104) have corrections of 80 percent applied to them.
- (iii) Completeness correction following B20 size dependent simulations, adopting the sizes measured for our sources using the u, v fitting (see Table 6). This gives a completeness for SDP.2173 of 80 percent (as it is compact) but for SDP.4104, the largest source, completeness is only 35 percent.

In Table 7 we present the counts we measure with each of the three completeness scenarios. We list the over-density of sources in our survey relative to both the predicted number counts from Oteo et al. (2016), and relative to the robust ($z < 4$) sample from B20. The minimum over-density we find when we apply *no completeness correction* to our counts at $S_{850} > 0.8, 1.3$ mJy, is 6.6–7.5 for O16 and 3–4 for B20. Furthermore, in contrast to the other studies, we have not excluded the area in the centre of the map which is covered by the target optical galaxy, *which makes our surface density estimates lower limits*.

Making a fairer comparison between our data and the literature, if we compare our counts using the O16 completeness correction to the O16 counts, we find an over-density of

a factor 7–8. If we compare our counts using the B20 completeness correction to the B20 counts, we find over-density factors of 5–5.5.

We have estimated the $1\text{-}\sigma$ uncertainties on our over-density measurements using the Bayesian approach described by Kraft et al. (1991). We used the same approach to estimate the probability that we could find the observed number of sources in our fields given the null hypothesis that there is no over-density compared to the background counts. Using the O16 counts, the resulting probability rules out the null hypothesis at the $4\text{-}\sigma$ level; using the B20 counts the null hypothesis is ruled out at $3.6\text{-}\sigma$. So, even though our over-density estimates have large uncertainties, we are confident that there is a significant over-density in our fields.

We next consider a possible physical explanation for this excess of SMG.

3.2 Lensing Magnification Bias

Cross-correlations between foreground structure traced by SDSS galaxies and background galaxies detected by *Herschel* have been detected with high significance (González-Nuevo et al. 2014, 2017). Anomalies in the positional offset distribution between *Herschel*-ATLAS sources with high-redshift submillimeter colours and foreground optical galaxies are also seen (Bourne et al. 2014). These findings both imply that there is significant magnification of the background SMG population by large scale structure in the foreground. The recent work by González-Nuevo et al. (2017) (hereafter GN17) shows that lensing from the foreground halo will produce an over-density of SMG relative to the unlensed background within $r < 20''$ of halos with $\log M_h/M_\odot > 13.5$. The magnitude of the over-density will correlate with the distance of the SMG from the projected centre of the halo mass distribution.

We have computed the relative over-density of SMG as a function of radius from the centre (assuming that the target $z = 0.35$ galaxy is the centre of its halo). Figure 4 shows our estimated cross-correlation (red dots) compared to the cross-correlation measurements obtained by GN17 (grey squares), who studied the magnification bias due to Luminous Red Galaxies with $0.2 < z < 0.8$ from GAMA (Baldry et al. 2018) which act as lenses on the high redshift ($z > 1.2$) SMG detected by H-ATLAS. There is a good agreement between both set of measurements. To derive physical information on the typical halo that can produce such magnification bias, we perform a similar analysis to that described in Bonavera et al. (2019). By neglecting the shear effect in the magnification bias, Bonavera et al. exploit the direct relationship between the cross-correlation function and the halo convergence: $\kappa(\theta) = 1 - (w_x(\theta) + 1)^{\frac{1}{2(\beta-1)}}$, where $\beta \gtrsim 3$ is the slope of the integrated source counts of the background SMG sample. As is common in previous works analysing the magnification bias, we model a Navarro Frenk and White (NFW: Navarro et al. 1997) mass density profile with the mass, M_{200c} , and concentration, C . The data do not allow a direct constraint with the current statistics, but Figure 4 shows that they are consistent with typical values of $M_{200c} = 7 \times 10^{13} M_\odot$ and $C = 5.5$ (blue solid line). Varying each parameter by ± 30 percent produces the dashed lines (C) and the pale blue solid lines (M_{200c}). There is intrinsic

⁵ The errors quoted on the O16 counts are very much larger than $1/\sqrt{N}$, but there is no explanation within the paper as to what other sources of error are contributing. Taking the O16 errors at face value, the B20 counts are compatible within the 1σ uncertainty, but if we used a $1/\sqrt{N}$ estimate for the O16 errors, then the B20 counts would be significantly higher.

Table 7. The number counts estimated from our data compared to other ALMA counts at 850 μ m.

S_{850} (mJy)	n	Reference counts	$N_{\text{obs}}(> S)$ (deg $^{-1}$)	$N_{\text{cor}}(> S)$ (deg $^{-1}$)	$N_{\text{bg}}(> S)$ (deg $^{-1}$)	Over-density		$P(\text{null})_{\text{obs}}$ (σ)	$P(\text{null})_{\text{cor}}$ (σ)
0.82	7	O16	25735	28089	3861	6.7 $^{+2.9}_{-2.2}$	7.3 $^{+3.1}_{-2.4}$	3.9	4.0
1.3	4		12109	13266	1609	7.5 $^{+4.5}_{-3.2}$	8.2 $^{+4.9}_{-3.5}$	3.1	3.2
0.82	7	B20	25735	35529	6431	4.0 $^{+1.7}_{-1.3}$	5.5 $^{+2.4}_{-1.9}$	3.1	3.6
1.3	4		12109	20707	4033	3.0 $^{+1.8}_{-1.3}$	5.1 $^{+3.1}_{-2.2}$	2.1	2.7

Estimated counts in bins of 850 μ m flux. n is the number of sources per bin, $N_{\text{obs}}(> S)$ is the surface density we measure *not corrected* for completeness, $N_{\text{cor}}(> S)$ accounts for the completeness correction using the same method as the background counts being compared to. $N_{\text{bg}}(> S)$ are the background cumulative counts from [Oteo et al. \(2016\)](#) (O16) and [Bethérmin et al. \(2020\)](#) (B20) respectively. These are *corrected* for completeness. The over-density columns are the relative over-density in our fields (both uncorrected and corrected for completeness) compared to the literature ‘blank-field’ measures including 1 σ errors derived from the approach of [Kraft et al. \(1991\)](#). $P(\text{null})$ is the significance at which the null hypothesis is rejected (that the number of sources we see is a random realisation of the number counts given by the literature reference).

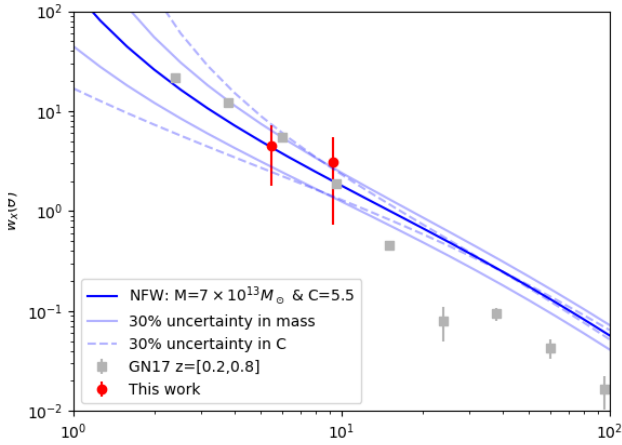


Figure 4. The cross correlation signal for background SMG and foreground structure in the range $0.2 < z < 0.8$ from SDSS and GAMA. Grey points are the results of the statistical cross-correlation using H-ATLAS sources with estimated FIR photo- z $z > 1$ from GN17. Red points are the SMG found in the fields of our $z = 0.35$ targets in two radial bins. The solid blue line is for a NFW halo with $M_{200c} = 7 \times 10^{13} M_{\odot}$ and concentration parameter $C = 5.5$. The dashed lines represent the model with a variation of ± 30 percent in C , while the translucent solid lines show a variation of ± 30 percent in halo mass.

degeneracy between mass and concentration in the fitting, and to provide direct constraints will require a larger sample which could be split over more radial bins.

The values which are representative of the cross-correlation are in good agreement with the M_{200c} vs C relationships from [Child et al. \(2018\)](#) and [Dutton & Macciò \(2014\)](#). The magnifications expected at $r = 3 - 12''$ for halos this massive are of the order $\mu = 1.5 - 3$ ([González-Nuevo et al. 2014](#)) which is enough to make a substantial over-density of SMG visible due to the steep number counts in the sub-mm waveband. This halo mass corresponds to $M_{*} \sim 1 - 3 \times 10^{11} M_{\odot}$ using the relationships for $M_{200c} - M_{*}$ from both [Moster et al. \(2010\)](#) and [Behroozi et al. \(2013\)](#). We might expect to find a small group of galaxies consisting of a bright, massive central galaxy with a few additional dwarf satellites of much lower mass.

The six SMG fields have central galaxies with $M_{*} = 6.5 \times 10^{10} - 1.6 \times 10^{11} M_{\odot}$; four of the six central galaxies are interacting with smaller satellites (evidence for this is the optical morphology and kinematics of CO and [C I], see [Dunne et al. submitted](#) for details), and a fifth (SDP.1160) is a member of a GAMA spectroscopic group with another $r < 19.8$ galaxy lying outside the ALMA B7 field of view. The only galaxy for which we have no spectroscopic evidence for a close neighbour is SDP.2173, although there are three dwarf galaxies in the KIDS catalogue ([de Jong et al. 2017](#); [Cavuoti et al. 2015](#); [Wright et al. 2018](#)) which have $z_{\text{ph}} = 0.37 - 0.38$ located 40-90 kpc in projection and could very plausibly be in the same halo. SDP.2173 also has the brightest r-band magnitude of any of the sources we observed, $R_{AB} = -21.70$. All four of the interacting systems in our sample of 12 have an SMG in the field. The GAMA survey is highly spectroscopically complete for $r < 19.8$ galaxies, and groups with $N \geq 2$ spectroscopic members have been catalogued in the GC 3 group catalogue of [Robotham & Driver \(2011\)](#). While only SDP.163 and SDP.1160 are listed as group members in the GC 3 , our own exploration of the GAMA data cube reveals a galaxy (GAMA 372510) located a co-moving projected distance of $D = 0.86$ Mpc with a $dv = 396 \text{ km s}^{-1}$ from SDP.6418. Not all the $z = 0.35$ galaxies with SMG in the field would be expected to be designated as groups by GAMA for two reasons. Firstly, the GAMA criteria for group identification requires $N \geq 2$ sources with $r < 19.8$ meeting the radius and velocity criteria. Smaller groups with one dominant bright galaxy would therefore probably not be identified as such because the second brightest group member would be fainter than the GAMA spectroscopic limit. All of our ALMA targets have $r < 19.4$, with a median $r = 19.0$ for the fields containing SMG – much brighter than the typical GAMA group brightest galaxy at this redshift. Secondly inspection of the GAMA $N(z)$ shows that the sensitivity to large scale structure drops dramatically at $z > 0.3$ so the group catalogue is likely to be incomplete for intermediate mass groups at the redshifts of this sample.

The environments and optical properties of the SMG field target galaxies are listed in Table 8.

Table 8. Environment of the $z = 0.35$ galaxies which have SMG in the field.

Field	R_{tot}	Environment	dwarf z_{ph}
1160	-21.98	GAMA group (103864)	
2173	-21.70	3 dwarfs $r_p = 40 - 90$ kpc	0.37–0.38
3366	-21.65	close pair	0.26–0.38
4104	-21.37	close pair	0.37
5347	-21.39	2 dwarfs, signs of interaction	0.62
6418	-22.04	GAMA 372510: $r = 0.86$ Mpc, and $\Delta v = 396 \text{ km s}^{-1}$ also dwarf interaction	0.42

R_{tot} Total absolute r-band magnitude of the galaxies in the halo. Environment: commentary on the type of environment for the target $z = 0.35$ galaxy whose halo is responsible for the lensing magnification bias. Dwarf z_{ph} : photo- z of any dwarf satellite galaxies using KIDS data (de Jong et al. 2017; Cavuoti et al. 2015; Wright et al. 2018).

4 BOOSTING OF THE H-ATLAS FLUXES BY SMG IN THE BEAM.

Lensing by the halo of the massive $z = 0.35$ system increases the probability of finding a high redshift SMG within the same *Herschel* beam as the target low redshift source. This is a proverbial can of worms for modelling statistical properties of sub-mm surveys, e.g. source counts, sub-mm colour distributions and SED modelling. Flux boosting from the SMG will affect all SPIRE fluxes, but those at longer wavelengths disproportionately so for two reasons. Firstly, the *Herschel* beam is larger at longer wavelengths, thus a contaminant at distance d will have a higher beam profile weighting at longer wavelengths. Secondly, the sub-mm colour of the high redshift SMG will be redder (relatively brighter at $500\mu\text{m}$) compared to the target source, as the observed frame samples closer to the peak of the SED at high redshift. The percentage contamination to the $500\mu\text{m}$ flux from the high- z SMG is thus larger than that at $250\mu\text{m}$.

To estimate the contamination of the H-ATLAS fluxes for this sample at $z = 0.35$, we take the ALMA $850\mu\text{m}$ flux measured for each SMG (S_{SMG}) and calculate the SPIRE fluxes the SMG should have using plausible values for the dust SED. We consider a range of redshift ($1 < z < 5$), ruling out redshift ranges where the predicted $250\text{--}500\mu\text{m}$ signal would be highly visible in the H-ATLAS maps at the position of the SMG. For the remaining possible redshifts we calculate S_{λ}^C , the contribution of the SMG to the *Herschel* $\lambda\mu\text{m}$ fluxes of the $z = 0.35$ galaxy, by weighting the predicted SMG flux in each SPIRE band by the beam attenuation at the location of the $z = 0.35$ galaxy relative to the position of the SMG:

$$S_{\lambda}^C = S_{\text{SMG}} \left(\frac{850\mu\text{m}}{\lambda} \right)^{4+\beta} \frac{e^{h(1+z)/c\lambda_{850k}T_d} - 1}{e^{h(1+z)/c\lambda kT_d} - 1} e^{-d^2/0.36\theta_{\lambda}^2}$$

Here λ refers to the SPIRE wavelength of interest in μm , θ_{λ} is the relevant beam size for SPIRE ($18''$, $25''$ and $35''$ for the 250 , 350 and $500\mu\text{m}$ bands). S_{SMG} is the $850\mu\text{m}$ ALMA flux of the SMG and z is the redshift chosen for the prediction. The dust SED parameters we use are $T_d = 38 \text{ K}$ and $\beta = 1.8$, which are plausible values for SMG (Chapman et al. 2005; da Cunha et al. 2015; Stach et al. 2019), and d is the separation between the SMG and the centre of the target galaxy in arcsec.

To determine the most likely contamination values, we

Table 9. Estimated sub-mm fluxes for the SMG and their boost effect to the $z = 0.35$ H-ATLAS source photometry.

SMG	z_{SED}	S_{250} (mJy)	S_{350} (mJy)	S_{500} (mJy)
1160.s1	2	11.0 (9.0)	8.0 (7.1)	3.9 (3.7)
1160.s2	3	16.4 (4.6)	18.1 (9.0)	12.0 (8.6)
1160.H1	4	17.0 (0.02)	28.6 (0.8)	26.0 (4.5)
2173	1.5	14.4 (9.2)	8.6 (6.7)	3.7 (3.3)
3366	1.5	13.7 (12.5)	8.1 (7.7)	3.5 (3.4)
4104	2	19.3 (12.7)	14.0 (11.1)	6.9 (6.2)
5347	4	3.3 (1.2)	.. (2.5)	... (2.7)
6418	5	1.6 (1.2)	4.1 (3.5)	5.1 (4.7)
6451.b7	4	1.2 (0.7)	1.9 (1.5)	1.8 (1.5)
6451.b3	4	3.4 (0.9)	5.7 (2.7)	5.2 (3.6)

z_{SED} is the redshift used to compute the SMG fluxes for an SED with $T_d = 38 \text{ K}$, $\beta = 1.8$ and the measured S_{850} flux from Table 6. Predicted flux of the SMG in the *Herschel* bands and in parentheses its contamination to the H-ATLAS fluxes of the $z = 0.35$ galaxy. The 1160.H1 red source catalogue fluxes, 18.0, 27.7, 23.9 mJy at 250, 350, $500\mu\text{m}$ Ivison et al. (2016) are replicated with an $S_{850} = 10 \text{ mJy}$ SMG for our standard SED, which produces the contamination listed above. 6451.b7 is a 4.9σ source in the band 7 image with a flux of $S_{850} = 0.68 \text{ mJy}$. 6451.b3 is a potential line emitter at 3 mm, which is given the maximum $S_{850} < 2 \text{ mJy}$ based on the 3σ noise at its position in the B7 image.

step through in redshift from 1.5–5 in steps of $\Delta z = 0.5$, calculating the estimated contamination signal at each redshift. We adjust the H-ATLAS catalogue fluxes for the low redshift targets (Table 2) by these contamination values and then fit the SED from UV– $850\mu\text{m}$ using MAGPHYS (see Section 4.2). We choose the redshift (z_{SED}) at which the correction produces the lowest overall χ^2 for the SED fit; z_{SED} and contamination values are listed in Table 9.⁶ Interestingly, we find that the fields containing SMG with K-band counterparts produce the best fits when the SMG is assumed to be at $z = 1.5 - 2$ while those without K-band counterparts have better fits when the SMG is assumed to have $z > 3$.

The boosting effect will also mean that a low redshift sub-mm source is more likely to be above the detection threshold in a flux-limited survey if its halo is acting as a lens for a SMG with small projected separation. In order to see what effect the best estimate of our boosting has on our initial sample selection, we subtract the $250\mu\text{m}$ contamination in Table 9 from the flux reported in the H-ATLAS SDP catalogue from Rigby et al. (2011).⁷ We then determine how many of the sources would still have been in the catalogue at $S_{250}/\sigma_{250} \geq 5$ had there been no SMG. There is clearly a lot of uncertainty in this rough estimate because a wide range of contaminating $250\mu\text{m}$ fluxes still produce acceptable fits to both the *Herschel* maps and the SED fits. The two brightest sources with SMG in the field (SDP.1160 and SDP.2173) remain at $S_{250}^{\text{cor}} > 5\sigma_{\text{SDP}}$ for any reasonable SMG contamination estimate. Of the other four, there are possi-

⁶ The redshift and T_d are roughly degenerate in this process but we are not attempting to constrain either; merely we wish to retrieve FIR colours which are most compatible with the PACS and ALMA $850\mu\text{m}$ photometry, which we know to be uncontaminated.

⁷ This is the relevant catalogue for the purpose of this calculation since it was from here that the sample was originally selected.

ble redshift ranges where the contamination would still allow them to remain in the sample (e.g. $z > 2.5$ for SDP.3366 and SDP.4104, $z > 3$ for SDP.5347 and $z > 5$ for SDP.6418).

Depending on the redshift of the SMG, it is entirely possible that all six sources would remain in the SDP sample even without the presence of the SMG, for the best estimate of contamination in Table 9 4/6 would remain in the sample and in the worst case, pushing the contamination to the highest permitted values only 2/6 would remain.

The possibility that the high fraction of ‘lensing’ systems in our $250\mu\text{m}$ catalogue is higher than it should be due to the effect of the boosting does not negate the magnification lensing bias as an explanation for this effect, however it would need to be accounted for in the modelling to derive more accurate parameters. This is beyond the scope of this study, and much larger samples which could be selected in flux bins to mitigate this uncertainty would be required to exploit this further.

4.1 How much boosting is there for flux limited surveys with *Herschel*?

The sample of 12 galaxies at $z = 0.35$ targeted by ALMA is a blind sample of $250\mu\text{m}$ selected sources from H-ATLAS, and while small, it is an unbiased set of sources from that survey. The implications of so much boosting in the long wavelength H-ATLAS photometry could be profound. Taking the results from Tables 2& 9 we find that the average 350 (500) μm boost for the fields with SMG is 1.44 (1.75). If we assume the other fields have no contamination at all then we arrive at a global average boost factor of 1.26 (1.44) at 350 (500) μm . This is significantly higher than that estimated from the simulations for the H-ATLAS data release (DR1) by Valiante et al. (2016), who report an average boost of 1.09-1.1 for these flux densities in the 350 and $500\mu\text{m}$ bands. At $250\mu\text{m}$ the average boost is 1.23 for the SMG fields and 1.13 overall (assuming the other fields have a boost of 1.0). This agrees reasonably well with the Valiante et al. (2016) and Rigby et al. (2011) simulations indicating that the analysis of $250\mu\text{m}$ data from H-ATLAS is tractable using the corrections produced in the data release papers. This boosting by lensing bias will be a redshift dependent effect because there is a higher probability for lensing events to occur for halos within a certain redshift range (dependent on the redshift distribution of the background population). For typical SMG, simulations by Lapi et al. (2012) suggest that this lensing bias will be greatest for lens halos around $z \sim 0.5$ and will decrease sharply below $z = 0.1 - 0.2$. To determine the boosting corrections with more accuracy, a larger sample across a larger redshift range would be required. This effect will not be limited to the H-ATLAS survey but will affect any *Herschel* survey where the sources are in the redshift interval with a high probability for lensing ($0.2 < z < 0.7$). The method of flux measurement is also unlikely to mitigate these boosts unless any high redshift SMG are identified at other wavelengths during source extraction using a cross-identification (XID) method (e.g. Hurley et al. 2017; Pearson et al. 2017; Wang et al. 2019).

4.2 Impact of ALMA data on SED fits to *Herschel* photometry

The discovery of such a large boost to the $350\mu\text{m}$ and $500\mu\text{m}$ fluxes in this sample suggests that in the absence of ALMA information, SED fits to H-ATLAS (and any other non-deblended *Herschel*) photometry could be biased in some significant fraction of sources.

To assess this, we fitted UV-FIR SEDs for the $z = 0.35$ targets to two versions of our photometry. We used the energy balance SED fitting code MAGPHYS (da Cunha et al. 2008) which uses libraries of optical and infrared SEDs with parameters drawn stochastically from physically motivated priors. We use extended infrared libraries which have an ISM cold temperature range of 10–30 K, as several of the sources favoured warmer ISM temperatures than allowed in the standard MAGPHYS infrared libraries. More details of the ancillary data used in the fitting and the full results for the $z = 0.35$ sample are in Dunne et al. *submitted*.

In Case 1, we used H-ATLAS only data for the FIR photometry (Table 2: longest wavelength $500\mu\text{m}$) without any adjustment for the contamination by high- z sources, i.e. what we would have done in ignorance of the $850\mu\text{m}$ information from ALMA. In Case 2, we used our full FIR data-set including the ALMA $850\mu\text{m}$ flux and having corrected the SPIRE 250 – $500\mu\text{m}$ photometry for the contamination by any high- z SMG in the field as described in Section 4.

The results of the comparison are shown in Table 10, where we compute L_{850}^{SED} from the MAGPHYS fit as has been done in some literature studies (Hughes et al. 2017). The fits using only the *Herschel* photometry give $L_{850}^{\text{SED}}(500\mu\text{m})$ while those which additionally include the ALMA B7 data give $L_{850}^{\text{SED}}(850\mu\text{m})$.

The average offset in the SED-based $850\mu\text{m}$ luminosity, $\Delta L_{850}^{\text{SED}} = L_{850}^{\text{SED}}(500\mu\text{m}) - L_{850}^{\text{SED}}(850\mu\text{m}) = 0.15$ dex (for the fields without SMG the average is 0.09 dex, while for those fields with SMG the average is 0.2 dex). The temperatures estimated for the cold dust in the diffuse ISM are sensitive to the *Herschel* SPIRE colours, and as expected, these are also biased in the fits to H-ATLAS only photometry in the fields with SMG. In Table 10, T_{500} is the cold ISM temperature from MAGPHYS for the fits to *Herschel* only photometry, while T_{850} are the temperatures from fits including the ALMA photometry, and having corrected the *Herschel* fluxes for SMG contamination. The average temperature without ALMA photometry is $\langle T_{500} \rangle = 22.2$ K (median 21.6 K), while that with ALMA $850\mu\text{m}$ data and corrected fluxes is $\langle T_{850} \rangle = 24.4 \pm 0.8$ K (median 24.5 K). Part of this effect is independent of any boosting by SMG and is due to the lower signal-to-noise at the 350 and $500\mu\text{m}$ wavelengths compared to $250\mu\text{m}$ in the *Herschel* photometry. The long-wavelength ALMA flux constrains the cold dust temperature and mass, and without it we suspect that MAGPHYS fits are returning close to the median of the flat prior (20 K).

For the dust masses the bias is greater with an average offset $\Delta M_d = M_d(500\mu\text{m}) - M_d(850\mu\text{m}) = 0.24$, again the effect is much larger in fields with SMG (0.36 vs. 0.11). The effect on the derived dust mass from MAGPHYS is larger than that on L_{850}^{SED} because the dust mass is sensitive to temperature as well as the overall flux, and the tempera-

tures from the *Herschel* only fits are lower than those which include the ALMA data.

The effect of the flux boosting on the SED fits is much smaller *once ALMA data are present* because the ALMA 850 μ m data force such a tight constraint on the SED shape. Using uncorrected SPIRE fluxes in conjunction with ALMA 850 μ m data produces differences in SED parameters which are well within the 1σ errors ($\Delta < 0.03$ dex in L_{IR} , $\Delta < 0.1$ dex in M_d , $\Delta < 0.1$ dex in sSFR, and $\Delta < 1$ K in T_c). Therefore, the boosting corrections are not so important as long as the high resolution long wavelength data are present; however without ALMA data, the lack of boosting correction may lead to large biases in analyses of *Herschel* samples. For example, the VALES survey (Villanueva et al. 2017) was an ALMA CO(1-0) follow-up of 160 μ m selected H-ATLAS sources in the redshift range $0.1 < z < 0.4$. In one paper (Hughes et al. 2017) the H-ATLAS photometry was fitted using MAGPHYS and the SED extrapolated to give $L_{850}^{\text{SED}}(500\mu\text{m})$. This was then compared to the CO luminosities and calibrations for the dust-to-ISM mass factor α_{850} derived. However, in a re-analysis of the literature, Dunne et al. *in prep* show that the average L_{850}/L'_{CO} from VALES is 0.2 dex lower than *any* other sample of low or high redshift sources, including this $z = 0.35$ sample. We expect that this offset in L_{850}/L'_{CO} is due to the lensing magnification boosting effect shown in this work; Table 10 shows that the difference in L_{850}^{SED} inferred with and without the ALMA data is of this order. Other analyses potentially affected by this bias are the evolution of the 350 and 500 μ m luminosity and dust mass functions (Dunne et al. 2011; Marchetti et al. 2016), modelling of the 350 and 500 μ m source counts (Clements et al. 2010; Béthermin et al. 2012; Valiante et al. 2016), SED evolution (e.g. Symeonidis et al. 2013; Viero et al. 2013) and stacking analyses (e.g. Bourne et al. 2012; Viero et al. 2013; Schreiber et al. 2015). In particular, the stacking analyses of both Bourne et al. (2012) and Viero et al. (2013) found that the dust temperatures decreased with stellar mass in the lowest redshift bin (as we would predict based on the extra boosting at 350 and 500 μ m due to the cosmic lensing bias). In Bourne et al. (2012), a strong increase in the stacked 500 μ m luminosity of optically red (passive) galaxies was also seen from $z = 0 - 0.35$. A strong lensing explanation did not seem to explain those findings at that time, but the possibility of the lensing bias reported here and in González-Nuevo et al. (2014) was not known at that time. A strongly evolving optically red population which had optical spectral signatures (in stacks) of both old stellar populations and ongoing SF was found in Eales et al. (2018) using the H-ATLAS catalogues. Could these optically red sources with strongly evolving dust emission be sign-posting the halos producing the magnification lensing bias?

A larger sample of $0.2 < z < 0.7$ galaxies selected at 250 μ m and imaged with ALMA will be required to understand and address these issues, and to determine the statistics of boosting due to this effect in bins of redshift and stellar mass.

4.3 Summary of flux boosting and its implications

In summary, the 250 μ m flux is the least affected of the SPIRE bands by the presence of a background SMG because

Table 10.

The difference in SED fitted parameters when using *Herschel* only photometry compared to the corrected *Herschel*+ ALMA data.

Name	SMG	T_{850}	T_{500}	ΔM_d	$\Delta L_{850}^{\text{SED}}$
163	N	22.5	21.6	0.07	0.08
3132	N	25.9	22.4	0.19	0.15
5323 [†]	N	21.8	16.5	0.53	0.45
5526	N	24.4	25.6	-0.10	-0.08
6216	N	20.0	20.3	-0.05	-0.1
6451	N	25.0	25.7	0.03	0.06
1160	Y	28.3	21.5	0.66	0.32
2173	Y	24.5	19.7	0.40	0.26
3366	Y	26.5	20.2	0.71	0.58
4104	Y	27.7	25.4	0.22	0.06
5347	Y	19.9	20.4	0.03	0.02
6418	Y	23.4	21.7	0.14	0.001

Notes: Sources are grouped as to whether they have an SMG detected in the field at 850 μ m. T_{850} is the cold dust temperature fitted by MAGPHYS using the 850 μ m ALMA data and making corrections for blending as described in Section 4. T_{500} is the temperature fitted to the catalogued H-ATLAS photometry only with no corrections. ΔM_d is the difference in log M_d between the H-ATLAS only and corrected H-ATLAS+850 μ m photometry. $\Delta L_{850}^{\text{SED}}$ is the difference in log L_{850}^{SED} from the best fitting MAGPHYS SED in the H-ATLAS only and corrected H-ATLAS+850 μ m cases. [†] SDP.5323 has no PACS coverage and therefore its SED is very poorly constrained without the ALMA data point. We do not use this source in the analysis of average properties.

(a) the beam size increases with increasing wavelength, and (b) the K-correction favours means that high redshift sources are relatively brighter at the longer wavelengths. The practical consequences of the contaminant sources are thus:

- The SMG in the *Herschel* beam boosts the 250 μ m flux of the $z = 0.35$ galaxy; in cases near the threshold for detection this could push the $z = 0.35$ source into the H-ATLAS catalogue. This effect results in an increased probability to find a nearby background SMG for 250 μ m sources close to the detection limit.

- The lensing explanation for the over-density of SMG in these fields is not weakened by the boosting effect, but the parameters derived from the modelling would be affected. This is beyond the scope of this study.

- The SMG in the beam reddens the *Herschel* sub-mm colours of the target galaxy, making them relatively brighter at 350 and 500 μ m than they would have been without the contaminant. This mimics the effect of colder dust in the SED and leads to an underestimate of the cold dust temperature in MAGPHYS or two-component MBB fitting. For single MBB fits, it would result in a lower value for β , if that were a free parameter.

- There are likely to be significant over-estimates of sub-mm fluxes if they are estimated by extrapolating SEDs fitted to *Herschel* fluxes which have been boosted in this way.

- The combination of flux-boosting and reddening of the SED means that M_d and L_{850}^{SED} can be biased high by 0.15-0.25 dex for samples affected by this process: 350–850 μ m sources $0.2 < z < 0.7$ measured with large beams.

5 CONCLUSIONS

We present serendipitous detections of high redshift dusty galaxies in ALMA 850 μ m images of a complete sample of twelve $z = 0.35$ galaxies, selected at 250 μ m from the H-ATLAS survey.

- Half of the ALMA Band 7 fields contained one or more high redshift SMG, an over-density of a factor 4–6 relative to the background counts.
- We compared the statistics for the SMG with models of the lensing effect of group scale halos finding a remarkably good agreement, both in terms of the cross-correlation signal and the correlation between galaxies in halos with interacting satellites and the presence of SMG. Thus lensing is certainly a plausible explanation for the excess SMG detected around these sources.
- These extra SMG contribute significantly to the SPIRE 350 and 500 μ m in some cases. We derive average flux-boosting factors of 1.13, 1.26 and 1.44 for the 250, 350 and 500 μ m SPIRE bands for this group of 12 representative 250 μ m sources at $z = 0.35$ from H-ATLAS. These are significantly larger corrections at 350 and 500 μ m than estimated by Valiante et al. (2016) who used simulations which did not include lensing between low and high-redshift sources. A boosting correction related to lensing is likely to be dependent on the redshifts of the target sources, as the probability for lensing depends on the lens-source geometry. For $z < 0.1$ the lensing probability is much lower, but from $z = 0.2 - 0.7$ it is likely that this sample is reasonably representative. Larger samples at different redshifts would be required to investigate this further.

DATA AVAILABILITY

The data underlying this article are publicly available from the ALMA archive <http://almascience.eso.org/aq/> using the project code 2012.1.00973.S.

ACKNOWLEDGEMENTS

We thank S. Eales for helpful discussions on the impact of boosting on the H-ATLAS photometry, R. J. Ivison for healthy paranoia and an encyclopedic knowledge of SMG, and H. Gomez for careful consideration of the draft manuscript. LD and SJM acknowledge support from the European Research Council Advanced Investigator grant, COSMICISM and Consolidator grant, COSMIC DUST. LB and JGN acknowledge financial support from the PGC 2018 project PGC2018-101948-B-I00 (MICINN, FEDER) and PAPI-19-EMERG-11 (Universidad de Oviedo). JGN acknowledges financial support from the Spanish MINECO for the ‘Ramon y Cajal’ fellowship (RYC-2013-13256). This paper makes use of the following ALMA data: ADS/JAO.ALMA#2012.1.00973.S. ALMA is a partnership of ESO (representing its member states), NSF (USA) and NINS (Japan), together with NRC (Canada), MOST and ASIAA (Taiwan), and KASI (Republic of Korea), in cooperation with the Republic of Chile. The Joint ALMA Observatory is operated by ESO, AUI/NRAO and

NAOJ. The National Radio Astronomy Observatory is a facility of the National Science Foundation operated under cooperative agreement by Associated Universities, Inc. The Herschel-ATLAS is a project with Herschel, which is an ESA space observatory with science instruments provided by European-led Principal Investigator consortia and with important participation from NASA. The H-ATLAS website is <http://www.h-atlas.org>. GAMA is a joint European-Australasian project based around a spectroscopic campaign using the Anglo-Australian Telescope. The GAMA input catalogue is based on data taken from the Sloan Digital Sky Survey and the UKIRT Infrared Deep Sky Survey. Complementary imaging of the GAMA regions is being obtained by a number of independent survey programs including GALEX MIS, VST KIDS, VISTA VIKING, WISE, *Herschel*-ATLAS, GMRT and ASKAP providing UV to radio coverage. GAMA is funded by the STFC (UK), the ARC (Australia), the AAO, and the participating institutions. The GAMA website is: <http://www.gama-survey.org/>. This publication has made use of data from the VIKING survey from VISTA at the ESO Paranal Observatory, programme ID 179.A-2004. Data processing has been contributed by the VISTA Data Flow System at CASU, Cambridge and WFAU, Edinburgh.

REFERENCES

- ALMA Partnership et al., 2015, *ApJ*, **808**, L4
 Almaini O., Dunlop J. S., Willott C. J., Alexander D. M., Bauer F. E., Liu C. T., 2005, *MNRAS*, **358**, 875
 Aretxaga I., et al., 2011, *MNRAS*, **415**, 3831
 Baldry I. K., et al., 2018, *MNRAS*, **474**, 3875
 Behroozi P. S., Wechsler R. H., Conroy C., 2013, *The Astrophysical Journal*, **770**, 57
 Béthermin M., et al., 2012, *A&A*, **542**, A58
 Béthermin M., et al., 2020, arXiv e-prints, p. [arXiv:2002.00962](https://arxiv.org/abs/2002.00962)
 Blain A. W., 1997, *MNRAS*, **290**, 553
 Blain A. W., Kneib J. P., Ivison R. J., Smail I., 1999, *ApJ*, **512**, L87
 Bonavera L., et al., 2019, arXiv e-prints, p. [arXiv:1902.03624](https://arxiv.org/abs/1902.03624)
 Bourne N., et al., 2012, *MNRAS*, **421**, 3027
 Bourne N., et al., 2014, *MNRAS*, **444**, 1884
 Bourne N., et al., 2016, *MNRAS*, **462**, 1714
 Bussmann R. S., et al., 2015, *ApJ*, **812**, 43
 Cañameras R., et al., 2015, *A&A*, **581**, A105
 Cavuoti S., et al., 2015, *MNRAS*, **452**, 3100
 Chapman S. C., Blain A. W., Smail I., Ivison R. J., 2005, *ApJ*, **622**, 772
 Child H. L., Habib S., Heitmann K., Frontiere N., Finkel H., Pope A., Morozov V., 2018, *ApJ*, **859**, 55
 Clements D. L., et al., 2010, *A&A*, **518**, L8
 Combes F., García-Burillo S., Braine J., Schinnerer E., Walter F., Colina L., 2011, *A&A*, **528**, A124
 Cowie L. L., Barger A. J., Kneib J. P., 2002, *AJ*, **123**, 2197
 Driver S. P., et al., 2011, *MNRAS*, **413**, 971
 Driver S. P., et al., 2016, *MNRAS*, **455**, 3911
 Dunne L., et al., 2011, *MNRAS*, **417**, 1510
 Dutton A. A., Macciò A. V., 2014, *MNRAS*, **441**, 3359
 Eales S., et al., 2010, *PASP*, **122**, 499
 Eales S., et al., 2018, *MNRAS*, **473**, 3507
 Edge A., Sutherland W., Kuijken K., Driver S., McMahon R., Eales S., Emerson J. P., 2013, *The Messenger*, **154**, 32
 Fujimoto S., Ouchi M., Shibuya T., Nagai H., 2017, *ApJ*, **850**, 83
 González-Nuevo J., et al., 2014, *MNRAS*, **442**, 2680
 González-Nuevo J., et al., 2017, *J. Cosmology Astropart. Phys.*, **2017**, 024

Graham J. R., Liu M. C., 1995, *ApJ*, **449**, L29
 Griffin M. J., et al., 2010, *A&A*, **518**, L3
 Harris A. I., et al., 2012, *ApJ*, **752**, 152
 Hildebrandt H., et al., 2013, *MNRAS*, **429**, 3230
 Hodge J. A., et al., 2016, *ApJ*, **833**, 103
 Hsu L.-Y., Cowie L. L., Chen C.-C., Barger A. J., Wang W.-H., 2016, *ApJ*, **829**, 25
 Hughes T. M., et al., 2017, *MNRAS*, **468**, L103
 Hurley P. D., et al., 2017, *MNRAS*, **464**, 885
 Ivison R. J., et al., 2016, *The Astrophysical Journal*, **832**, 78
 Jarugula S., et al., 2019, *ApJ*, **880**, 92
 Knudsen K. K., van der Werf P. P., Kneib J. P., 2008, *MNRAS*, **384**, 1611
 Kraft R. P., Burrows D. N., Nousek J. A., 1991, *ApJ*, **374**, 344
 Lang P., et al., 2019, *ApJ*, **879**, 54
 Lapi A., Negrello M., González-Nuevo J., Cai Z. Y., De Zotti G., Danese L., 2012, *ApJ*, **755**, 46
 Liske J., et al., 2015, *MNRAS*, **452**, 2087
 Maddox S. J., Dunne L., 2020, *MNRAS*, **493**, 2363
 Marchetti L., et al., 2016, *MNRAS*, **456**, 1999
 Martí-Vidal I., Pérez-Torres M. A., Lobanov A. P., 2012, *A&A*, **541**, A135
 Martí-Vidal I., Vlemmings W. H. T., Muller S., Casey S., 2014, *A&A*, **563**, A136
 McMullin J. P., Waters B., Schiebel D., Young W., Golap K., 2007, in Shaw R. A., Hill F., Bell D. J., eds, *Astronomical Society of the Pacific Conference Series Vol. 376, Astronomical Data Analysis Software and Systems XVI*. p. 127
 Moster B. P., Somerville R. S., Maulbetsch C., van den Bosch F. C., Macciò A. V., Naab T., Oser L., 2010, *ApJ*, **710**, 903
 Navarro J. F., Frenk C. S., White S. D. M., 1997, *ApJ*, **490**, 493
 Nayyeri H., et al., 2017, *ApJ*, **844**, 82
 Negrello M., Perrotta F., González-Nuevo J., Silva L., de Zotti G., Granato G. L., Baccigalupi C., Danese L., 2007, *MNRAS*, **377**, 1557
 Negrello M., et al., 2010, *Science*, **330**, 800
 Negrello M., et al., 2017, *MNRAS*, **465**, 3558
 Oteo I., Zwaan M. A., Ivison R. J., Smail I., Biggs A. D., 2016, *ApJ*, **822**, 36
 Oteo I., et al., 2018, *ApJ*, **856**, 72
 Pearson W. J., Wang L., van der Tak F. F. S., Hurley P. D., Burgarella D., Oliver S. J., 2017, *A&A*, **603**, A102
 Pilbratt G. L., et al., 2010, *A&A*, **518**, L1
 Planck Collaboration et al., 2016, *A&A*, **594**, A13
 Poglitsch A., et al., 2010, *A&A*, **518**, L2
 Rigby E. E., et al., 2011, *MNRAS*, **415**, 2336
 Robotham A. S. G., Driver S. P., 2011, *MNRAS*, **413**, 2570
 Rowan-Robinson M., et al., 1991, *Nature*, **351**, 719
 Rujopakarn W., et al., 2016, *ApJ*, **833**, 12
 Schreiber C., et al., 2015, *A&A*, **575**, A74
 Simpson J. M., et al., 2015, *The Astrophysical Journal*, **799**, 81
 Smail I., Ivison R. J., Blain A. W., 1997, *ApJ*, **490**, L5
 Smith D. J. B., et al., 2011, *MNRAS*, **416**, 857
 Speagle J. S., Steinhardt C. L., Capak P. L., Silverman J. D., 2014, *The Astrophysical Journal Supplement Series*, **214**, 15
 Stach S. M., et al., 2019, *MNRAS*, **487**, 4648
 Swinbank A. M., et al., 2015, *ApJ*, **806**, L17
 Symeonidis M., et al., 2013, *MNRAS*, **431**, 2317
 Tadaki K.-i., et al., 2017, *ApJ*, **841**, L25
 Valiante E., et al., 2016, *MNRAS*, **462**, 3146
 Vieira J. D., et al., 2010, *ApJ*, **719**, 763
 Viero M. P., et al., 2013, *ApJ*, **779**, 32
 Villanueva V., et al., 2017, *MNRAS*, **470**, 3775
 Wang L., et al., 2011, *MNRAS*, **414**, 596
 Wang L., Pearson W. J., Cowley W., Trayford J. W., Béthermin M., Gruppioni C., Hurley P., Michałowski M. J., 2019, *A&A*, **624**, A98
 Wright A. H., et al., 2016, *MNRAS*, **460**, 765

Wright A. H., et al., 2018, arXiv e-prints, p. [arXiv:1812.06077](https://arxiv.org/abs/1812.06077)
 Yang C., et al., 2019, *A&A*, **624**, A138
 Zemcov M., Blain A., Halpern M., Levenson L., 2010, *ApJ*, **721**, 424
 Zhang Z.-Y., et al., 2018, *MNRAS*, **481**, 59
 da Cunha E., Charlot S., Elbaz D., 2008, *MNRAS*, **388**, 1595
 da Cunha E., et al., 2015, *ApJ*, **806**, 110
 de Jong J. T. A., et al., 2017, *A&A*, **604**, A134

This paper has been typeset from a \LaTeX file prepared by the author.

APPENDIX A: SIZE FITTING PROCEDURE

For the u, v source fitting we use the CASA task `UVMODELFIT` with a 2-d Gaussian model. The model is described by 6 parameters: the flux S_{fit} , position in RA and DEC, major axis size θ_{m1} , P.A., and the axial ratio b/a . For our data, the axial ratio is very poorly constrained and this led to a bias towards an axial ratio very close to zero, usually aligned with the P.A. of the beam. This tendency produces a bias in the value for S_{fit} and θ_{m1} , both of them being pushed towards the maximum allowable values. Since an axial ratio approaching zero is not physical, we conclude that no information can be derived on the axial ratio of these sources. To avoid the bias we chose to constrain the axial ratio to physically sensible values.

If we assume that galaxies are randomly oriented disks with inclination i , the distribution of $\sin i$ will be uniform. The resulting distribution of the apparent axial ratios (b/a) is non-uniform such that:

$$b/a = \sqrt{\cos^2 i (1 - q^2) + q^2}$$

where q is the intrinsic axial ratio of the disk, which is thought to be between 0.1–0.2 for disk galaxies. For a randomly oriented distribution of disks the expectation value of $\sin i$ is 0.5, which gives $\langle b/a \rangle = 0.753$. We therefore fitted the model to the data with the axial ratio fixed at $b/a = 0.753$ and these parameters are listed in Table 6.

The range of possible unknown disk orientations will contribute to the uncertainties of the other parameters, even though we have fixed the axial ratio in the fit. The upper and lower 1- σ ranges of b/a from the distribution of disk orientations are represented by the 16th and 84th percentiles ($b/a = 0.549, 0.987$) respectively. So to estimate the total uncertainties, we fit the model with b/a fixed to its 16th and 84th percentile values, and use the resulting parameters to set the 1- σ upper and lower bounds on θ_{m1} and S_{fit} . We then add this error in quadrature to the quoted fitting errors, $\delta x(\text{fit})$ to arrive at our best estimate of the uncertainties:

$$\frac{\delta \theta_{m1}(\text{tot})}{\theta_{m1}} = \sqrt{\frac{\delta \theta_{m1}(\text{fit})^2}{\theta_{m1}^2} + \left(\frac{\theta_{m1}(84) - \theta_{m1}(16)}{2 \theta_{m1}} \right)^2}$$

with a similar formalism for the other two parameters, S_{fit} and θ_{m2} (which is simply the axial ratio times the major axis).

In the majority of cases, the variation of b/a from the 16th–84th percentile range causes little extra variation in θ_{m1} or S_{fit} , and so the quoted parameter is rather insensitive to the exact value of axial ratio (1–3 percent in flux and 10–20 percent for major axis). For two sources (SDP.4104, SDP.5347) there is a larger sensitivity (5–7 percent in flux and 23–62 percent in major axis), this is reflected in larger errors on the parameters.

APPENDIX B: NOTES ON INDIVIDUAL FIELDS

SDP.1160

There are two bright SMG in this field located 5 and 12.5'' from the optical galaxy (Fig. 3); neither have a counterpart in the VIKING K-band image ($K_{AB} > 21.32$). There is also a 500 μm *Herschel* source 28.5'' to the South that is identified in the H-ATLAS 'red source' catalogue, which uses a subtractive method to recover sources which are very faint at 250 μm but brighter at 500 μm (Ivison et al. 2016). The H-ATLAS red source contributes 4.5 mJy to the 500 μm flux for SDP.1160. This source is outside the Band 7 imaged area, but searching in the Band 3 cube we find tentative evidence for two 3-mm line sources at similar redshift at the position of the 350 and 500 μm peaks, see Table C1. Combining the line information with the SPIRE colours (using the red source catalogue fluxes) we find that the most plausible redshift is $z = 4.4 - 4.8$ with the lines being either CO(4-3) or [CII]($^3\text{P}_1 - ^3\text{P}_0$). A very bright 850 μm source with a flux of 8-12 mJy would be expected in this scenario, or a number of weaker sources which together produce the red *Herschel* colours, such as those found by Oteo et al. (2018).

SDP.2173

There is an SMG in this field located 7.5'' from the optical galaxy, which has a K-band counterpart ($K_{AB} = 21.45$) clearly visible in the VIKING K-band image (Fig. 3 and Table 6). No 3-mm continuum or lines are detected at the location of the SMG.

SDP.3366

The $z = 0.35$ galaxy is interacting with a smaller companion to the North-East, as evidenced from the [CII] kinematics. Slightly further north we find strong 850 μm continuum emission from a SMG coincident with a very red source ($K_{AB} = 19.0$) located 3.4'' to the north-east of the $z = 0.35$ galaxy (Fig 3). There is a second, fainter, candidate SMG ($4 - 5\sigma$) just to the left of first, which is listed in Table C1 as 3366.s2. No 3-mm continuum or lines are detected at the location of the SMG.

SDP.4104

The $z = 0.35$ galaxy is interacting with a similar sized companion, as evidenced by the CO and [CII] kinematics. There is a bright SMG in this field located 7.2'' from the largest member of the pair, which has $K_{AB} = 20.7$ (see Fig. 3). No 3 mm continuum or lines are detected at the location of the SMG.

SDP.5347

The $z = 0.35$ galaxy is interacting with several small satellites, leaving a tidal trail of CO, [CII] and some dust to the western side of the galaxy. There is a 850 μm continuum source to the north-east, which we assume to be a high redshift SMG; details are presented in Table 6 and Fig. 3. There is a faint whiff of K-band emission in a highly smoothed image, and no 3 mm continuum or line detection.

SDP.6418

The $z = 0.35$ galaxy is interacting with a smaller neighbour, as evidenced by the [CII] kinematics. The SMG in this image is strong enough for self-calibration. There is no K-band counterpart and no 3 mm or line emission detected.

SDP.6451

The SPIRE colours of this source are most definitely contaminated, as is obvious when attempting an SED fit. We searched the data-set for any evidence of sources which may be contributing to the red SPIRE colours and find two potential candidates, which are listed in Table C1. 6451.s1 is a 4.9σ 850 μm source, which is only just below the threshold we consider for calculation of the number counts. 6451^l refers to a potential 3-mm line source, which just overlaps the B7 fov giving an upper limit to the 850 μm flux. These are not considered in the over-density calculation but listed in the Appendix for further information.

APPENDIX C: CANDIDATE HIGH REDSHIFT SOURCES.

Table C1. Properties of candidate SMG which are between $4\text{--}5\sigma$ in continuum, or possible line detections in band 3.

SMG	R.A.	Dec.	S_{850} (mJy)	SNR	r ($''$)	K_{AB}	
3366.s2	09:04:50.31	−00:12:00.17	0.33 ± 0.082^g	5.1	point	4.2	< 21.32
			0.32 ± 0.067^{pp}	4.8			
6451.s1	09:08:50.0	+02:26:00.85	0.68 ± 0.14	4.9	8.7	< 21.32	
SMG	R.A.	Dec.	S_{line} (Jy km s $^{-1}$)	σ_{line} (Jy km s $^{-1}$)	r ($''$)	K_{AB}	ν_{line} (GHz)
1160.l1	09:00:29.32	+01:21:46.8	2.83	0.76	30	< 21.32	85.25
1160.l2	09:00:28.86	+01:21:45.1	0.62	0.12	30	< 21.32	85.485
1160.l3	09:00:29.24	+01:21:46.8	0.56	0.12	30	< 21.32	87.525
5347.l1	09:06:59.22	+02:02:20.74	1.73	0.52	26.9	< 21.32	85.948
5347.l2	09:06:59.14	+02:02:27.17	0.52	0.17	20.7	< 21.32	85.948
6451.l1	09:08:48.6	+02:26:00.8	1.64	0.37	13	< 21.32	99.1678
6451.l2	09:08:49.3	+02:25:59.3	1.95	0.57	4	< 21.32	99.509

Line candidates at 3-mm. There is no continuum imaging at $850\mu\text{m}$ at the location of the SDP.1160 line candidates. Plausible line identifications are: $z = 3.06$ CO(3–2), $z = 4.4/4.77$ CO(4–3)/[C I]($^3\text{P}_1\text{--}^3\text{P}_0$) and $z = 5.76$ CO(5–4), but only the $z = 4.5\text{--}4.8$ solutions fit well with the SPIRE colours.