

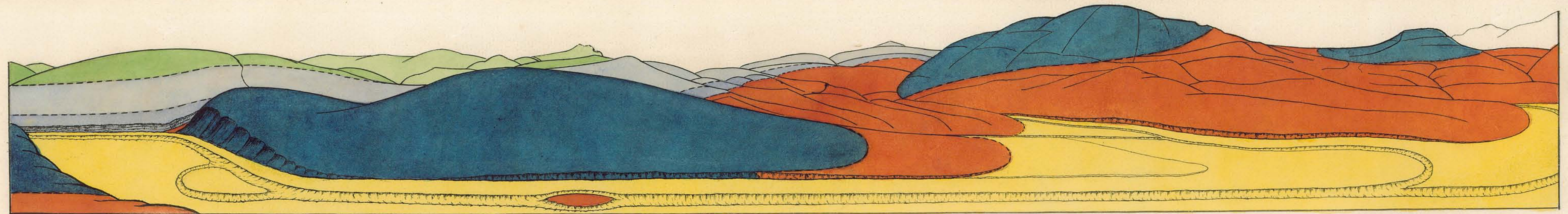
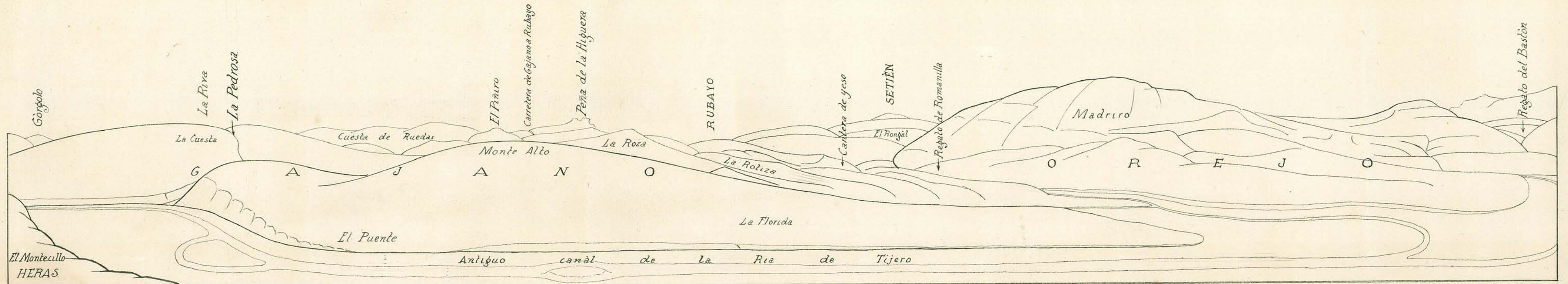
PROVINCIA DE SANTANDER

ERUPTIVO OFÍTICO DE LA RIA DE TIJERO

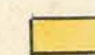






VISTO DESDE LA MIÉS DE HERAS

POR

FRANCISCO FERNANDEZ MONTES



EXPLICACION

	Aluviál.	ACTUAL		Charmontense. LIÁSICO. S.
	Aptense.	CRETACEO. I.		Keuper. TRIÁSICO. S.
	Wealdense.			Eruptivo ofítico
	Toarcense.	LIÁSICO. S.		

NOTAS

Los nombres de letras mayúsculas indican pueblos.

Los de minúsculas sitios o lugares.

EL AYUDANTE DE MINAS.

Francisco Fernandez Montes