



Article

# A Plasmid-Encoded FetMP-Fls Iron Uptake System Confers Selective Advantages to *Salmonella enterica* Serovar Typhimurium in Growth under Iron-Restricted Conditions and for Infection of Mammalian Host Cells

Vanesa García <sup>1,2,†</sup> , Ana Herrero-Fresno <sup>3</sup>, Rosaura Rodicio <sup>4,5</sup>, Alfonso Felipe-López <sup>2</sup>, Ignacio Montero <sup>1</sup> , John E. Olsen <sup>3</sup> , Michael Hensel <sup>2</sup> and María Rosario Rodicio <sup>1,5,\*</sup>

<sup>1</sup> Department of Functional Biology, Section of Microbiology, University of Oviedo, 33006 Oviedo, Spain; vanesag.menendez@usc.es (V.G.); nachomontero@gmail.com (I.M.)

<sup>2</sup> Division of Microbiology, University of Osnabrück, 49076 Osnabrück, Germany; alfonso.felipe@cinvestav.mx (A.F.-L.); Michael.Hensel@uni-osnabrueck.de (M.H.)

<sup>3</sup> Department of Veterinary and Animal Sciences, Faculty of Health and Medical Sciences, University of Copenhagen, 1870 Frederiksberg, Denmark; ahefr@sund.ku.dk (A.H.-F.); jeo@sund.ku.dk (J.E.O.)

<sup>4</sup> Department of Biochemistry and Molecular Biology, University of Oviedo, 33006 Oviedo, Spain; mrosaura@uniovi.es

<sup>5</sup> Translacional Microbiology Group, Health Research Institute of Principado de Asturias, 33011 Oviedo, Spain (ISPA)

\* Correspondence: rrodicio@uniovi.es; Tel.: +34-985103562

† Present address: Department of Veterinary and Animal Sciences, Faculty of Health and Medical Sciences, University of Copenhagen, 1870 Frederiksberg, Denmark.

Received: 8 April 2020; Accepted: 25 April 2020; Published: 27 April 2020



**Abstract:** The resistance plasmid pUO-StVR2, derived from virulence plasmid pSLT, is widespread in clinical isolates of *Salmonella enterica* serovar Typhimurium recovered in Spain and other European countries. pUO-StVR2 carries several genes encoding a FetMP-Fls system, which could be involved in iron uptake. We therefore analyzed *S. Typhimurium* LSP 146/02, a clinical strain selected as representative of the isolates carrying the plasmid, and an otherwise isogenic mutant lacking four genes (*fetMP-flsDA*) of the *fetMP-fls* region. Growth curves and determination of the intracellular iron content under iron-restricted conditions demonstrated that deletion of these genes impairs iron acquisition. Thus, under these conditions, the mutant grew significantly worse than the wild-type strain, its iron content was significantly lower, and it was outcompeted by the wild-type strain in competition assays. Importantly, the strain lacking the *fetMP-flsDA* genes was less invasive in cultured epithelial HeLa cells and replicated poorly upon infection of RAW264.7 macrophages. The genes were introduced into *S. Typhimurium* ATCC 14028, which lacks the FetMP-Fls system, and this resulted in increased growth under iron limitation as well as an increased ability to multiply inside macrophages. These findings indicate that the FetMP-Fls iron acquisition system exceeds the benefits conferred by the other high-affinity iron uptake systems carried by ATCC 14028 and LSP 146/02. We proposed that effective iron acquisition by this system in conjunction with antimicrobial resistance encoded from the same plasmid have greatly contributed to the epidemic success of *S. Typhimurium* isolates harboring pUO-StVR2.

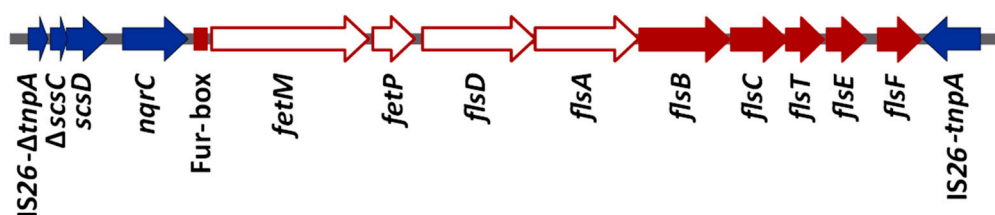
**Keywords:** *Salmonella enterica* serovar Typhimurium; high-affinity iron uptake systems; FetMP-Fls system; iron-restrictive conditions; epithelial cells invasion; macrophage intracellular replication

## 1. Introduction

Iron is an essential micronutrient required by nearly all bacteria, including non-typhoid serovars of *Salmonella enterica*, which are among the most common food-borne pathogens causing infections in humans [1]. Although iron is only required at very low concentrations ( $10^{-7}$  to  $10^{-5}$  M) for physiological processes [2], iron acquisition is challenging, because it is biologically unavailable in most environmental conditions. Ferrous ion ( $\text{Fe}^{2+}$ ), the reduced state required for incorporation into most iron-containing proteins, is only stable under anaerobic conditions, or under oxic conditions at low pH. In the presence of oxygen at physiological pH,  $\text{Fe}^{2+}$  spontaneously oxidizes to  $\text{Fe}^{3+}$ , the ferric form that is extremely insoluble and therefore useless for cellular processes [2,3]. To worsen the problem,  $\text{Fe}^{2+}$  ions can activate the Fenton reaction leading to generation of hydroxyl radicals, which are highly toxic, resulting in damage to cellular components [3,4]. Mammalian host chelators, such as ferritin, transferrin, and lactoferrin, prevent oxidative reactions and at the same time withhold this metal from pathogens [5,6].

To counteract the extremely low iron availability both in the external environment and within the host, bacterial pathogens like *S. enterica* have developed a variety of high-affinity iron uptake systems. They are based on three main strategies: (i) uptake of ferric iron by secreting siderophores, (ii) sequestration of ferric iron from exogenous siderophores or iron carrier proteins, and (iii) transport of ferrous iron across the cytoplasmic membrane [7]. Under iron shortage, *S. enterica* can synthesize and secrete the catecholate siderophore enterobactin [8,9], and its C-glycosylated derivative known as salmochelin [10,11]. The latter confers a significant growth advantage against competing bacteria in the infected intestine, because it is not recognized by lipocalin-2, an antimicrobial compound produced by epithelial cells and neutrophils during inflammation [12]. In addition to siderophore production, *S. enterica* hijacks  $\text{Fe}^{3+}$  from ferri-siderophores secreted by other microorganisms, including fungal (ferrichrome and coprogen) or bacterial (ferrioxamines) hydroxamates [13,14]. In contrast to  $\text{Fe}^{3+}$  that requires active transport to cross the outer membrane,  $\text{Fe}^{2+}$  can pass by diffusion through porins. Once in the periplasm, at least one  $\text{Fe}^{2+}$  (Feo), and two  $\text{Mn}^{2+}/\text{Fe}^{2+}$  (Sit and MntH) transporters internalize iron across the cytoplasmic membrane into the cytosol of *S. enterica* [15–17].

In previous studies, our group characterized an antibiotic resistance-encoding plasmid named pUO-StVR2, which is derived from pSLT, the virulence plasmid of *S. enterica* serovar Typhimurium (*S. Typhimurium*). This plasmid is widespread in clinical isolates from Spain and Portugal and was also detected in strains from the United Kingdom and Italy [18–22]. pUO-StVR2 contains a group of ORFs, here designated the *fetMP-fls* cluster (Figure 1), which are transcribed in the same orientation and preceded by a potential binding site for the ferric uptake regulator (Fur), which acts as a transcriptional repressor of genes and operons involved in iron uptake, using  $\text{Fe}^{2+}$  as a corepressor [2,23].



**Figure 1.** Schematic representation of the *fetMP-fls* region of plasmid pUO-StVR2 (flanked by truncated and intact copies of insertion sequence IS26). Genes *fetMP-flsDA* deleted in the mutant used to investigate the function of the putative FetMP-Fls iron acquisition system are indicated by white arrows; red arrows designate other *fls* genes, the small red square—a putative Fur box, and the blue arrows—additional genes in the *fetMP-fls* region. The ORFs from *fetM* to *flsF* were previously designated as ORF-R1 to ORF-R9 [24].

Previous information together with sequence comparisons suggest that the *fetMP-fls* region specifies an iron uptake system [24]; see Section 3.1. In *S. enterica*, homologous genes were only found in *S. Typhimurium* T000240 as part of a new genomic island of 82 kb termed GI-DT12, which also

contains all the resistance genes carried by pUO-StVR2 [25], as well as in plasmids of *S. Enteritidis* strain S14 and *S. Wien* strain ZM3 (accession numbers MN328348 and MK797990, respectively). Nevertheless, homologs of this system are detected in annotated genomes of numerous bacteria from different hosts and environments [26], although functional information is only available for a limited number, including strains of human pathogens *Escherichia coli*, *Yersinia pestis*, and *Campylobacter jejuni* [26–29].

In order to gain evidence on the role of the FetMP-Fls system encoded by pUO-StVR2 in *S. enterica*, a mutant strain of *S. Typhimurium* lacking the *fetM*, *fetP*, *flsD*, and *flsA* genes was generated in the present study. Functional analysis demonstrated that in comparison to the wild-type strain the mutant showed reduced ability to grow under iron-restricted conditions, contained a significantly lower concentration of intracellular iron, and could not efficiently invade epithelial cells or replicate within macrophages.

## 2. Materials and Methods

### 2.1. Bacterial Strains, Plasmids, and Culture Conditions

LSP 146/02, a clinical strain recovered from feces of a 62-year man with gastroenteritis, was chosen as representative of wild-type *S. Typhimurium* isolates carrying plasmid pUO-StVR2 and hence the putative iron uptake system [24]. pUO-StVR2 confers resistance to ampicillin, chloramphenicol, streptomycin/spectinomycin, sulfonamides, and tetracyclines, thus limiting the available selection markers required for generation of recombinant strains (see below). ATCC 14028 reference strain, positive for pSLT, and its mutant derivatives MvP818 ( $\Delta invC::FRT$  impaired in invasion) and P2D6 (*ssaV::mTn5* deficient in intracellular replication), were employed as controls in different experiments [30,31]. *E. coli* DH5 $\alpha$  (*lacZ* $\Delta$ M15, *recA1*, and *endA1* [32]) was used as the host strain for gene cloning. Unless stated otherwise, the strains were routinely grown in a Luria–Bertani (LB; 10 g/L tryptone, 5 g/L yeast extract, and 10 g/L NaCl, pH 7.0–7.4) broth or an LB agar, supplemented with ampicillin (100  $\mu$ g/mL), kanamycin (50  $\mu$ g/mL), gentamicin (20  $\mu$ g/mL), or trimethoprim (10  $\mu$ g/mL) when required.

### 2.2. In Silico Studies

Whole genome sequencing of *S. Typhimurium* LSP 146/02 harboring pUO-StVR2 was performed with the single-molecule real-time (SMRT) technology of Pacific Biosciences (PacBio, Menlo Park, CA, USA). Briefly, genomic DNA was extracted with a GenElute Bacterial Genomic DNA Kit (Sigma Aldrich, Darmstadt, Germany) and sequenced at Expression Analysis Inc. (Durham, NC, USA) from a library of about 6,500 bp fragments using the PacBio RSII platform. The reads were assembled with the Hierarchical Genome Assembly Process (HGAP 3) version 3.0. The assembly comprised two contigs, one corresponding to the entire chromosome and one to pUO-StVR2, which were annotated by the Prokaryotic Genomes Automatic Annotation Pipeline (PGAAP) of the National Center for Biotechnology Information (NCBI, USA). Genes related to iron uptake were identified by means of a database expressly built for the present study. To update previously obtained information [24], the *fetMP-fls* region of pUO-StVR2 (Figure 1) was thoroughly characterized and bacterial homologs were identified with *blastn* and *blastx* [33]. The products of the genes were compared with homologs using the multiple sequence alignment tool of Clone Manager (CmSuite9). The sequences are deposited in GenBank under accession numbers CP019950 (chromosome) and CP019951 (pUO-StVR2).

### 2.3. Construction of an *S. Typhimurium* LSP 146/02 *fetMP-flsDA* Deficient Strain

To investigate the role of the putative iron uptake system of pUO-StVR2, genes *fetM*, *fetP*, *flsD*, and *flsA* (Figure 1) were deleted from the *S. Typhimurium* LSP 146/02 genome by using the one-step gene inactivation method (previously described by Datsenko and Wanner [34]). The basic strategy of this method is to replace any DNA sequence by a selectable resistance cassette via homologous recombination. In the present study, plasmid pKD13 served as a template for PCR amplification of a

kanamycin resistance gene [*aph(3)-IIIa*] flanked by FRT (FLP recombinase recognition target) sites [34] using primers containing 40 nt 5'-extensions homologous to the ends (upstream and downstream) of the DNA to be deleted (Table S1). The resulting PCR product was transformed into competent LSP 146/02 cells containing pKD46-Gm [35]. This plasmid has the gentamicin resistance gene *aac(3)-Id* as a selectable marker, and carries the *exo*, *bet*, and *gam* genes of the  $\lambda$ -Red recombination system under the control of the inducible *araBAD* promoter. After induction with 10 mM arabinose of the  $\lambda$ -phage proteins in the strain harboring pKD46-Gm, the replacement of the *fetMP-flsDA* genes by the kanamycin resistance cassette was verified by PCR amplification using appropriate primers (Table S1). The generated strain, *S. Typhimurium* LSP 146/02  $\Delta$ *fetMP-flsDA::aph(3)-IIIa*, was directly employed in competition assays (see below). In addition, the kanamycin resistance cassette was removed by FLP-mediated recombination using plasmid pCP20-Gm that carries gentamicin [*aac(3)-Id*] and chloramphenicol (*cat*) resistance genes, and codes for an FLP recombinase which acts on directly repeated FRT sites. The  $\lambda$ -Red and FLP helper plasmids are easily cured by growth at 42 °C because of their temperature-sensitive replicon [35]. The mutant obtained (*S. Typhimurium* LSP 146/02  $\Delta$ *fetMP-flsDA::FTR*) will be designated  $\Delta$ *fetMP-flsDA* from now on.

#### 2.4. Bacterial Growth under Iron-Restricted Conditions

The involvement of the FetMP-Fls system of pUO-StVR2 in iron uptake was first tested by following the growth of LSP 146/02,  $\Delta$ *fetMP-flsDA*, and ATCC 14028 strains in an LB broth containing 0, 10, 50, and 100  $\mu$ M concentrations of chelating agent 2,2'-dipyridyl (Sigma), or in a PCN minimal medium containing all the micronutrients needed for bacterial growth, except iron. It consisted of 50 mL 10 x MES buffer (800 mM MES, 40 mM tricine, 3.76 mM K<sub>2</sub>SO<sub>4</sub>, 500 mM NaCl); 50 mL 250 mM phosphate buffer, pH 7.4; 5 mL 1.5 M NH<sub>4</sub>Cl; 10 mL 20% glucose; 0.5 mL 1M MgSO<sub>4</sub> × 7 H<sub>2</sub>O; 0.5 mL 10 mM CaCl<sub>2</sub> × 2 H<sub>2</sub>O; 0.5 mL 10,000 × micronutrients (10  $\mu$ M Na<sub>2</sub>MoO<sub>4</sub> × 2 H<sub>2</sub>O; 10  $\mu$ M NaSeO<sub>3</sub> × 5 H<sub>2</sub>O; 4  $\mu$ M H<sub>3</sub>BO<sub>3</sub>; 0.3 mM CoCl<sub>2</sub> × 6 H<sub>2</sub>O; 0.1 mM CuSO<sub>4</sub> × 5 H<sub>2</sub>O; 0.8 mM MnCl<sub>2</sub> × 4 H<sub>2</sub>O; 0.1 mM ZnSO<sub>4</sub> × 7 H<sub>2</sub>O); and 384 mL H<sub>2</sub>O<sub>dd</sub> [36] and was further supplemented with 0.2, 2, 20, or 100  $\mu$ M of FeCl<sub>3</sub> (Sigma). Overnight cultures of the *S. Typhimurium* strains were used to inoculate flasks containing 50 mL of each media to an OD<sub>600</sub> of 0.01, which were incubated with shaking (250 rpm) at 37 °C. Growth was recorded by following the increase in the OD<sub>600</sub> of the cultures every 2 h for 12 h, and after 24 h.

#### 2.5. Intracellular Metal Content Determination by Inductively Coupled Plasma-Mass Spectrometry (ICP-MS)

The total amount of intracellular iron and two other transition metals, manganese and zinc, was quantified by ICP-MS, using a modification of the procedure described in [37]. *S. Typhimurium* LSP 146/02 wild-type and  $\Delta$ *fetMP-flsDA* strains were grown in an LB broth containing 50  $\mu$ M of 2,2'-dipyridyl to the late logarithmic phase. Cells were harvested by centrifugation at 7000 × g for 7 min and washed three times with 20 mM Tris-HCl, 1 mM EDTA (pH 7.4) followed by three times with 20 mM Tris-HCl (pH 7.4). Bacterial pellets were desiccated at 95 °C overnight to determine the dry cell weight. Pellets were resuspended in 35% HNO<sub>3</sub> (Trace Metal Grade, Fisher Chemical, Madrid, Spain) and heated at 90 °C for 4 h. After removal of debris by centrifugation, samples were diluted with MQ water to a final concentration of 3.5% HNO<sub>3</sub>. Metal content was determined by ICP-MS on an Agilent 7700 x ICP-MS (Santa Clara, CA, United States) at the Technical Services of the University of Oviedo. Results are expressed in  $\mu$ g of metal/g of cell dry weight.

#### 2.6. Competition Assays

To test the ability of the LSP 146/02 wild-type strain to compete for iron against the mutant lacking the *fetMP-flsDA* genes, both strains were co-cultured under iron-restricted and non-restricted conditions. In order to differentiate the two strains, LSP 146/02 was labelled with a trimethoprim resistance gene. For this, the *phoN* gene of the wild-type strain, which encodes a non-essential acid phosphatase [38], was replaced by the *dfpA12* gene from plasmid pUO-STmRV1 [39] using the one-step

inactivation method as described in Section 2.3 [34] and the primers shown in Table S1. The correct substitution of *phoN* by *dfrA12* was confirmed by PCR amplification using suitable primers (Table S1). LSP 146/02  $\Delta phoN::dfrA12$  and LSP 146/02  $\Delta fetMP-flsDA::aph(3)-IIIa$  mixed at a 1:1 ratio ( $1 \times 10^7$  CFU/mL each) were grown together at 37 °C with shaking for 10 h in a PCN medium supplemented with 0.2, 2, 20, or 100 mM FeCl<sub>3</sub>. Growth was monitored every 2 h by spreading 100  $\mu$ l of tenfold serial dilution on an LB agar containing either trimethoprim or kanamycin and quantifying the CFU/mL corresponding to each strain.

### 2.7. Infection of Eukaryotic Cell Lines

The ability of LSP 146/02 and  $\Delta fetMP-flsDA$  strains to invade HeLa cells, a classical model for *Salmonella* invasion of epithelial cells, and to replicate within macrophage cell line RAW264.7 (lacking a functional natural resistance-associated macrophage protein 1, Nramp1<sup>-/-</sup>) was tested. Relevant *Salmonella* control strains were included in these experiments (see below). HeLa and RAW264.7 cells (Cell Lines Service (CLS), Heidelberg, Germany) were propagated in a high-glucose (4.5 g/L) Dulbecco's modified Eagle's medium (DMEM) containing 4 mM glutamine (PAA, Cölbe, Germany) and 10% (HeLa) or 6% (RAW264.7) inactivated fetal calf serum (iFCS) (Sigma), at 37 °C in an atmosphere of 5% CO<sub>2</sub>. For the infection experiments, cells were seeded in 24-well plates to confluence with approximately  $2 \times 10^5$  and  $4 \times 10^5$  cells per well for HeLa cells and RAW264.7, respectively, at the day of infection.

#### 2.7.1. Invasion of HeLa Cells

In these experiments, the *S. Typhimurium* LSP 146/02 wild-type and  $\Delta fetMP-flsDA$  strains were tested together with ATCC 14028 and its isogenic  $\Delta invC::FRT$  mutant [30], which were used as positive and negative controls for invasion, respectively. Strains were grown overnight in an LB broth at 37 °C. The cultures were diluted 1:30 with a fresh LB broth and incubated for further 3.5 h at 37 °C with shaking to reach the late logarithmic growth phase to induce expression of invasion genes. Bacteria were added to the HeLa cells at the multiplicity of infection (MOI) of 5. The plates were centrifuged at 500 rpm for 5 min in order to synchronize infection, and incubated for 25 min at 37 °C under 5% CO<sub>2</sub>. After infection, HeLa cells were washed with the PBS and incubated for 1 h in a DMEM supplemented with 100  $\mu$ g/mL gentamicin to kill free bacteria. HeLa cells were then washed with a pre-warmed PBS and lysed with 0.1% Triton X-100 in the PBS for 10 min at room temperature. Serial dilutions of the lysates were plated onto the Müller–Hinton (MH) agar for quantification of CFU/mL. Rates of invasion are expressed as the percentage of CFU/mL corresponding to gentamicin-protected bacteria with respect to the initial inoculum.

#### 2.7.2. Replication within Macrophages

Together with the *S. Typhimurium* LSP 146/02 wild-type and  $\Delta fetMP-flsDA$  strains, the ATCC 14028 strain and the isogenic *ssaV*-mTn5 derivative [31] were included as positive and negative controls, respectively. All strains were grown overnight in an LB broth with appropriate antimicrobial selection, and RAW264.7 macrophages were infected at the MOI of 1. After 25 min, non-internalized bacteria were removed by washing with PBS and the remaining extracellular bacteria were killed by incubation in a DMEM supplemented with 100  $\mu$ g/mL of gentamicin for 1 h and then, to quantify intracellular replication, with 10  $\mu$ g/mL gentamicin for 1 and 15 h (2 and 16 h post-infection). After this treatment, RAW264.7 cells were washed and lysed with 0.1% Triton X-100 in the PBS. Serial dilutions of the lysates were plated onto the MH agar for the quantification of CFU/mL. Rates of intracellular proliferation were calculated as the ratio of gentamicin-protected bacteria recovered from host cells 2 and 16 h post-infection.

## 2.8. Complementation Studies and Transformation of *S. Typhimurium* ATCC 14028 with the Cloned *fetMP-flsDA* Genes

For complementation studies, 5,566 bp of pUO-StVR2 containing *fetMP-flsDA* and the upstream promoter region were cloned as an XbaI/KpnI fragment into low copy number vector pWKS130, which has the kanamycin resistance *aphA1* gene as a selectable marker [40]. The DNA of pUO-StVR2 was extracted with a PureLink™ HiPure Plasmid DNA Purification Kit (Invitrogen, Madrid, Spain) and used as a template for PCR amplification of the fragment with forward and reverse primers containing recognition sites for XbaI and KpnI at the 5'-end, respectively (Table S1). The PCR product and the pWKS130 vector were digested with these enzymes, mixed, ligated, and transferred into *E. coli* DH5 $\alpha$  competent cells [41]. A plasmid carrying the right insert named pWKS130::*fetMP-flsDA* was introduced into LSP 146/02  $\Delta$ *fetMP-flsDA* and also into *S. Typhimurium* ATCC 14028 to investigate the effect of the iron uptake system of pUO-StVR2 on this bacterium. The generated strains (LSP 146/02  $\Delta$ *fetMP-flsDA*<sup>C</sup> and ATCC 14028 *fetMP-fls*<sup>T</sup>) were tested for growth under iron-limiting and non-limiting conditions, invasion of HeLa cells, and replication within macrophages as described above.

## 2.9. Statistical Analysis

Results of all the assays carried out in this work are expressed as the mean values  $\pm$  standard deviations (SD) of three biological replicates. Statistical analysis was performed with the GraphPad Prism version 8.3 software (GraphPad Inc). For the competition assays, CFU data were log<sub>10</sub> transformed and compared at each time point tested. For analysis of the results related to infection of cell lines, raw CFU/mL data were used and % of invasion or fold net replication were determined and compared. Statistical significance was established using a one-sample *t*-test analysis (for intracellular metal content and competition assays) or a one-way ANOVA with the Tukey's multiple comparison post-test (for growth curves based on OD measurements and infection of cell lines). *p*-values < 0.05 were considered significant.

## 3. Results

### 3.1. Multiple High-Affinity Iron-Uptake Systems are Encoded by the Genome of *S. Typhimurium* LSP 146/02

Sequence analysis of the genome of *S. Typhimurium* LSP 146/02 revealed the presence of genes encoding numerous systems involved in iron uptake, including i) the genes required for production and secretion of siderophores enterobactin and salmochelin, import of the Fe<sup>3+</sup>-loaded siderophores, and cytoplasmic reduction of Fe<sup>3+</sup> to Fe<sup>2+</sup> for incorporation into bacterial proteins; ii) the genes for uptake of exogenous ferri-siderophores (ferrichrome, rhodotorulic acid, and ferrioxamine); and iii) the genes for production of Fe<sup>2+</sup> transporters Feo, Sit, and MntH (Table S2). These high-affinity iron uptake systems are widely spread and highly conserved in serovars and strains of *S. enterica*, including *S. Typhimurium* LT2 and ATCC 14028. Comparison of the LSP 146/02 regions encoding these systems revealed that they are identical to homologous regions in the genome of LT2 and nearly identical to those in ATCC 14028 (Table S3). Thus, they are likely to be functional in LSP 146/02.

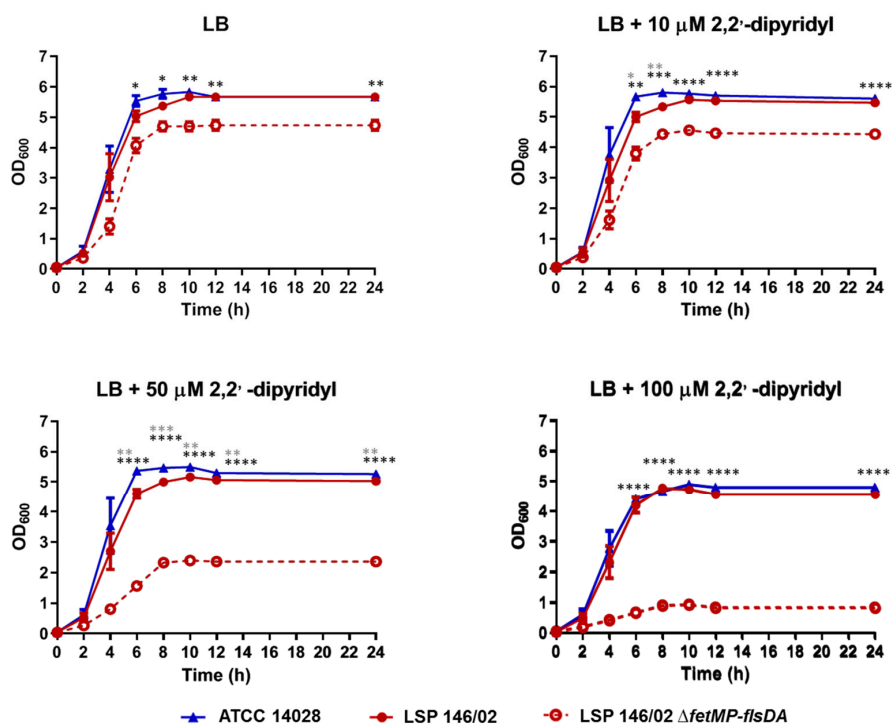
Besides the former systems, plasmid pUO-StVR2 provides to *S. Typhimurium* LSP 146/02 the *fetMP-fls* genes, previously designated ORF-R1 to ORF-R9 (Figure 1), which could specify an additional iron uptake system [24]. Sequence analysis identified the product of ORF-R1 as a membrane protein belonging to a subgroup of the iron/lead transporter (ILT) superfamily homologous to the FetM protein of uropathogenic *E. coli* strain F11, whereas the product of ORF-R2 resembles a periplasmic iron binding protein related to the *E. coli* F11 FetP that, together with FetM, constitutes an Fe<sup>2+</sup>/Fe<sup>3+</sup> uptake system regulated by the Fur [27]. The ORFs downstream of the *fetMP*-like genes (ORF-R3 to ORF-R9), here termed *fls* (for *fet*-linked *Salmonella*), were predicted to encode a membrane protein of unknown function (*flsD*); a previously uncharacterized ABC transporter with two permease components (*flsA* and *flsB*) and an ATPase component (*flsC*); and a periplasmic protein of the thioredoxin-like (TRL) superfamily (*flsT*). The products of these genes are identical or highly similar to products of the

equivalent genes found in *S. Typhimurium* T000250, *S. Enteritidis* S14, *S. Wien* ZM3, and *E. coli* F11, and more distantly related to those of *Y. pestis* KIM5 (identities ranging from 56% to 88%) and *C. jejuni* 81-176 (from 27% to 57%) (Table S4; [25–29]). *flsE* and *flsF*, which specify a hypothetical protein and a member of the histidine phosphatase (HP) superfamily, are not conserved in *fetMP-fls*-like clusters.

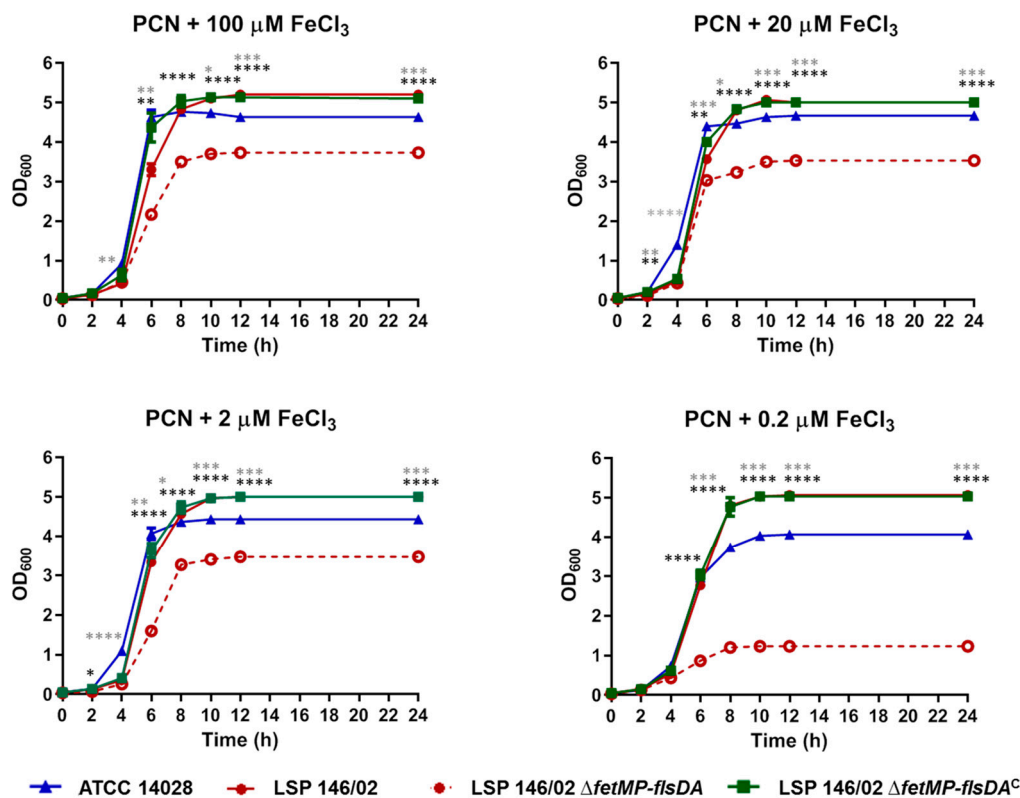
### 3.2. Growth of the *S. Typhimurium* LSP 146/02 $\Delta$ *fetMP-flsDA* Strain is Impaired under Iron-Restrictive Conditions

In order to assess the physiological contribution of the *fetMP-fls* cluster to iron acquisition, growth of wild-type strain LSP 146/02 and its isogenic *fetMP-flsDA* deletion mutant were compared under iron-restrictive growth conditions. *S. Typhimurium* ATCC 14028, usually employed for virulence studies in *Salmonella*, was included as a control.

As shown in Figure 2, 2,2'-dipyridyl slightly affected the growth of both LSP 146/02 and ATCC 14028 at concentrations of 10 and 50  $\mu$ M, while bacterial growth decreased by approximately 17% in the presence of 100  $\mu$ M of the chelating agent. Interestingly, growth of the  $\Delta$ *fetMP-flsDA* strain was severely impaired at 50  $\mu$ M (55% reduction) and 100  $\mu$ M (83% reduction) of 2,2'-dipyridyl, despite the presence of the many other iron uptake systems expected to be functional according to sequence comparisons. In an iron-free PCN medium supplemented with decreasing concentrations of  $\text{FeCl}_3$ , growth of the mutant was reduced by approximately 30% compared to the isogenic wild-type strain at 100, 20, or 2  $\mu$ M  $\text{FeCl}_3$ , while bacteria barely grew at 0.2  $\mu$ M  $\text{FeCl}_3$  (80% reduction; Figure 3). Complementation  $\Delta$ *fetMP-flsDA* with a low copy number vector harboring the *fetMP-flsDA* genes under the control of the native promoter region restored the ability of the mutant to grow like the wild-type strain under iron-limiting conditions (Figure 3).



**Figure 2.** Growth curves obtained for *S. Typhimurium* ATCC 14028, wild-type *S. Typhimurium* LSP 146/02, and its isogenic  $\Delta$ *fetMP-flsDA* derivative using an LB broth supplemented with increasing concentrations of chelating agent 2,2'-dipyridyl. The data shown are the mean values  $\pm$  standard deviations of three biological replicates. Statistical significance (\*\*\*\*  $p < 0.0001$ ; \*\*\*  $p < 0.001$ ; \*\*  $p < 0.01$ ; \*  $p < 0.05$ ) was determined by ANOVA and the Tukey's post-test. Black and grey asterisks show significant differences for LSP 146/02 versus  $\Delta$ *fetMP-flsDA* and ATCC 14028, respectively.



**Figure 3.** Growth curves obtained for *S. Typhimurium* ATCC 14028, *S. Typhimurium* LSP 146/02 wild-type, its isogenic  $\Delta$ *fetMP-flsDA* derivative, and the complemented LSP 146/02  $\Delta$ *fetMP-flsDA*<sup>C</sup> strain using a PCN medium supplemented with decreasing concentrations of FeCl<sub>3</sub>. The data shown are the mean values  $\pm$  standard deviations of three biological replicates. Statistical significance (\*\*\*\*  $p < 0.0001$ ; \*\*\*  $p < 0.001$ ; \*\*  $p < 0.01$ ; \*  $p < 0.05$ ) was determined by ANOVA and the Tukey's post-test. Black and grey asterisks show significant differences for LSP 146/02 versus  $\Delta$ *fetMP-flsDA* and ATCC 14028, respectively. Significant differences were not observed for LSP 146/02 versus LSP 146/02  $\Delta$ *fetMP-flsDA*<sup>C</sup>.

### 3.3. The Intracellular Iron Content is Higher in *S. Typhimurium* LSP 146/02 than in the $\Delta$ *fetMP-flsDA* Mutant

The growth behavior of  $\Delta$ *fetMP-flsDA* on iron-restricted media indicates an important role of the *fetMP-fls* system in iron uptake. This was further corroborated by comparison of the intracellular iron concentrations in LSP 146/02 and its isogenic mutant, which still carries the genes for many other iron uptake systems.

As shown in Table 1, the iron concentration was significantly lower ( $p < 0.0005$ ) in the mutant than in the wild-type strain. In contrast, no significant differences were observed for manganese, an iron analogue with shared transport systems, like SitABCD and MntH [17], or zinc, the second most abundant transition metal in living organisms [42].



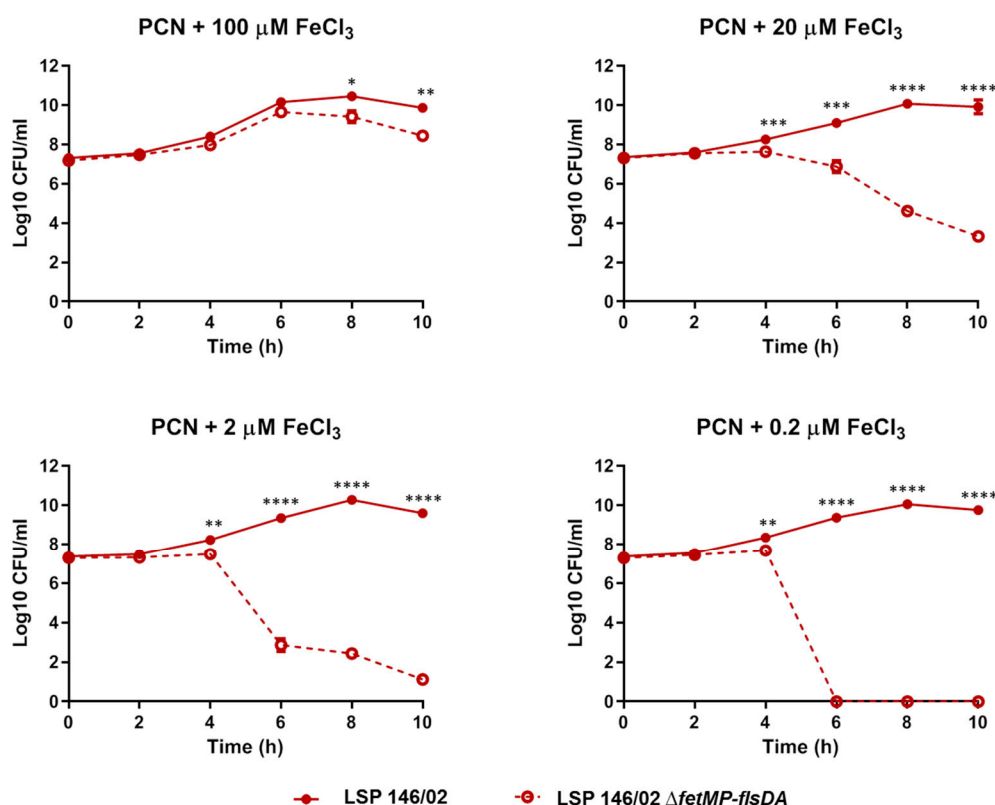
**Table 1.** Intracellular metal concentration in *S. Typhimurium* LSP 146/02 and its  $\Delta fetMP-flsAB$  mutant.

Strain	Fe [ $\mu\text{g/g dw}$ ]	Mn [ $\mu\text{g/g dw}$ ]	Zn [ $\mu\text{g/g dw}$ ]
LSP 146/02	1516.48 $\pm$ 184.32	39.58 $\pm$ 9.96	60.05 $\pm$ 3.69
LSP 146/02 $\Delta fetMP-flsDA$	280.69 $\pm$ 90.68	31.78 $\pm$ 3.89	60.22 $\pm$ 7.72
<i>p</i> -value	< 0.0005	0.2747	0.9742

Intracellular concentrations of iron, manganese, and zinc were determined by inductively coupled plasma-mass spectrometry (ICP-MS) in the cells grown on an LB broth containing 50  $\mu\text{M}$  of 2,2'-dipyridyl to the late logarithmic phase. The results expressed in  $\mu\text{g}$  of metal per g of cell dry weight (dw) are the mean values  $\pm$  standard deviations of three biological replicates, each with three technical replicates. Statistical significance was calculated using a one-sample *t*-test; *p*-values < 0.05 are considered significant.

### 3.4. *S. Typhimurium* LSP 146/02 Outcompetes its $\Delta fetMP-flsDA$ Mutant Strain under Iron Limitation

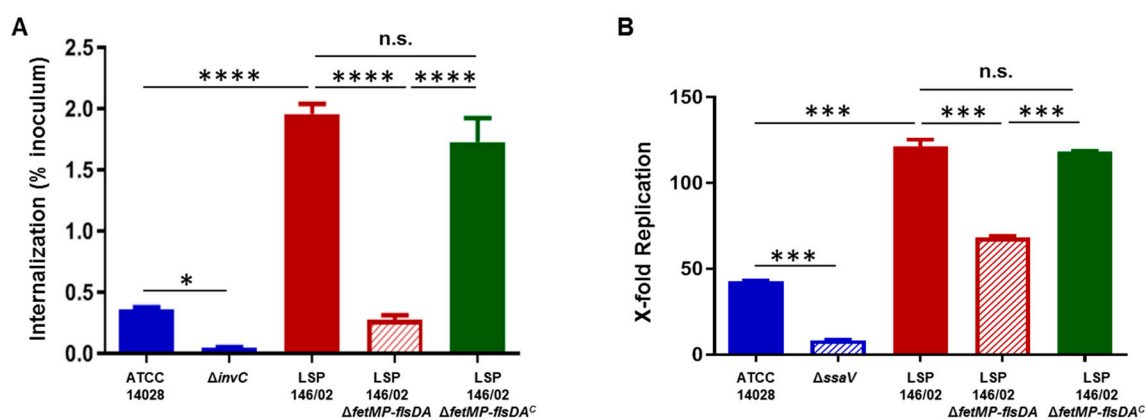
Competition assays were performed to compare the fitness of the  $\Delta fetMP-flsDA$  strain relative to wild-type LSP 146/02 under iron-limiting conditions. To distinguish the strains, the wild-type and the mutant labelled with trimethoprim (LSP 146/02::*dfrA12*) and kanamycin [LSP 146/02  $\Delta fetMP-flsDA$ ::*aph(3)-IIIa*] resistance cassettes, respectively, were employed. The results are shown in Figure 4. In accordance with the role of the deleted ORFs in iron uptake, the mutant strain was totally outcompeted by the wild-type strain 6 h post-inoculation in a PCN medium supplemented with the lowest iron concentration (0.2  $\mu\text{M}$ ). The same result was obtained 10 h post-inoculation at 2  $\mu\text{M}$ , and displacement of the mutant by the wild-type strain was still observed at higher iron concentrations (with significant differences detected at *t* = 8 h and *t* = 10 h post-inoculation).



**Figure 4.** Competition assays of the *S. Typhimurium* LSP 146/02 wild-type strain and its isogenic derivative  $\Delta fetMP-flsDA$  using a PCN medium with different concentrations of  $\text{FeCl}_3$ . The data shown are the mean values  $\pm$  standard deviations of three biological replicates. Statistical significance (\*\*\*\*  $p < 0.0001$ ; \*\*\*  $p < 0.001$ ; \*\*  $p < 0.01$ ; \*  $p < 0.05$ ) was determined using a one-sample *t*-test at each time point tested.

### 3.5. Invasion of Epithelial Cells and Replication within Macrophages Decrease in the Absence of the *fetMP-flsDA* Genes

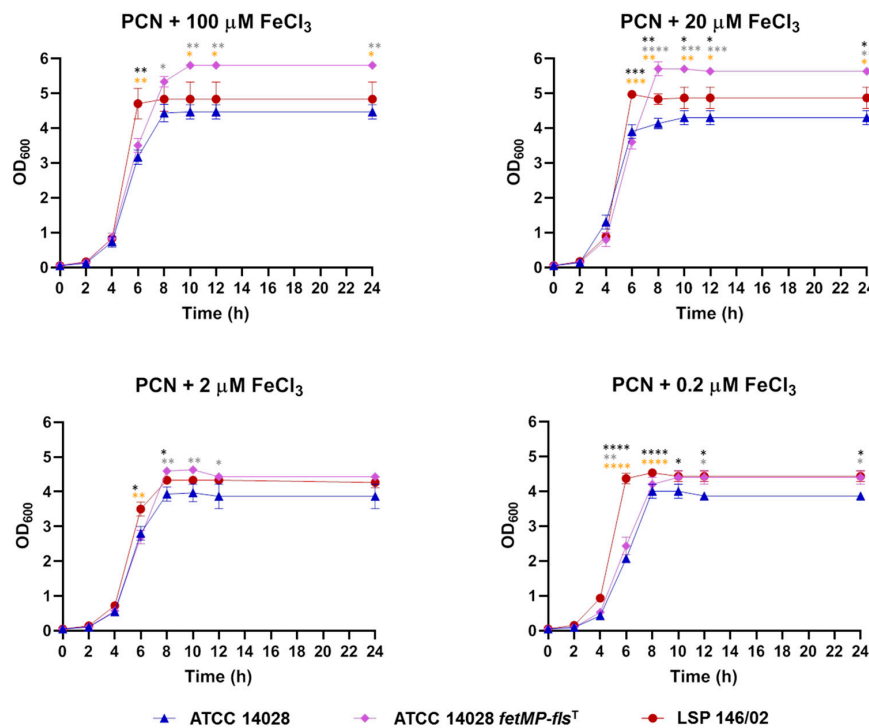
In order to assess the role of the iron uptake system in virulence, the invasion of epithelial HeLa cells by the wild-type LSP 146/02 and  $\Delta fetMP-flsDA$  strains was investigated. ATCC 14028 and its isogenic *invC* deficient mutant were included as positive and negative controls, respectively. As shown in Figure 5A, the mutant strain lacking the iron uptake system was significantly less invasive (7-fold reduction) than LSP 146/02 ( $p < 0.0001$ ). The same strains were tested for the ability to replicate intracellularly within RAW264.7 macrophages, except for the negative control, for which the *ssaV* mutant of ATCC 14028 instead of the *invC* mutant was employed. Proliferation of  $\Delta fetMP-flsDA$  was significantly reduced (1.7-fold) when compared to LSP 146/02 ( $p < 0.0001$ ) (Figure 5B). Moreover, we confirmed that introduction of the intact *fetMP-flsDA* genes restored the ability of the mutant strain to invade HeLa cells and to replicate within macrophages, reaching wild-type levels (Figure 5A,B).



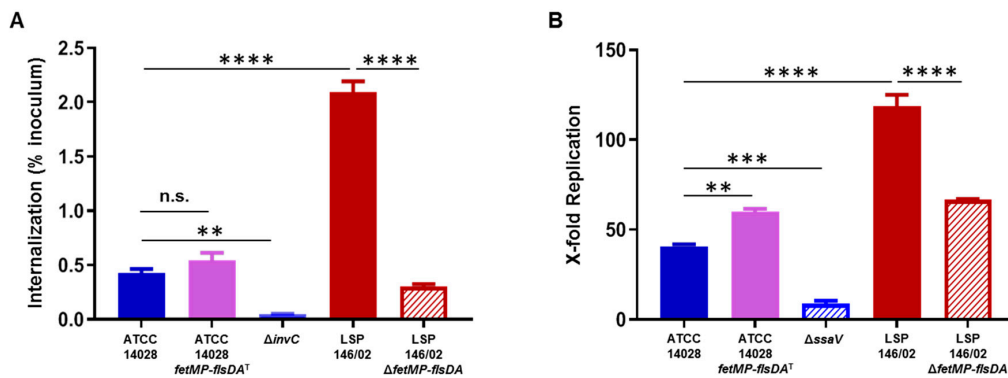
**Figure 5.** Invasion of epithelial HeLa cells (A) and replication within RAW264.7 macrophages (B) by wild-type *S. Typhimurium* LSP 146/02, its  $\Delta fetMP-flsDA$  isogenic derivative, and the latter strain complemented with the cloned *fetMP-flsDA* genes (LSP 146/02  $\Delta fetMP-flsDA^C$ ). The data shown are the mean values  $\pm$  standard deviations of three biological replicates. Statistical significance (\*\*\*\*  $p < 0.0001$ ; \*\*\*  $p < 0.001$ ; \*\*  $p < 0.01$ ; \*  $p < 0.05$ ; n.s., not significant) was determined by one-way ANOVA and the Tukey's post-test.

### 3.6. The *FetMP-Fls* System of pUO-StVR2 Increases Performance of *S. Typhimurium* ATCC 14028 under Iron-Limiting Conditions

To evaluate whether the iron acquisition system encoded by pUO-StVR2 could also provide a selective advantage to *S. Typhimurium* ATCC 14028, the cloned *fetMP-flsDA* genes were introduced into this strain and then growth under iron-restricted conditions, invasion of HeLa cells, and replication within RAW264.7 cells were tested. As shown in Figure 6, the transformed strain grew better than the original strain in an iron-free PCN medium with all  $FeCl_3$  concentrations tested, and it grew similarly or even better than LSP 146/02 depending on the iron concentration in the medium. The cloned DNA also increased the ability of ATCC 14028 to replicate inside macrophages, although it did not improve its capacity to invade epithelial cells (Figure 7).



**Figure 6.** Growth curves obtained for *S. Typhimurium* ATCC 14028 with and without the cloned *fetMP-flsDA* genes (*ATCC 14028 fetMP-flsDA<sup>T</sup>*) using a PCN medium supplemented with decreasing concentrations of  $\text{FeCl}_3$ . The data shown are the mean values  $\pm$  standard deviations of three biological replicates. Statistical significance (\*\*\*\*  $p < 0.0001$ ; \*\*\*  $p < 0.001$ ; \*\*  $p < 0.01$ ; \*  $p < 0.05$ ) was determined by ANOVA and the Tukey’s post-test. Black, grey, and orange asterisks show significant differences for ATCC 14028 versus LSP 146/02, ATCC 14028 versus *ATCC 14028<sup>T</sup>*, and LSP 146/02 versus *ATCC 14028 fetMP-flsDA<sup>T</sup>*, respectively.



**Figure 7.** Invasion of epithelial HeLa cells by *S. Typhimurium* ATCC 14028 harboring the cloned *fetMP-flsDA* genes (*ATCC 14028 fetMP-flsDA<sup>T</sup>*) (A) and replication of the same strain within RAW264.7 macrophages (B). The data are the mean values  $\pm$  standard deviations of three biological replicates. Statistical significance (\*\*\*\*  $p < 0.0001$ ; \*\*\*  $p < 0.001$ ; \*\*  $p < 0.01$ ) was determined by one-way ANOVA and the Tukey’s post-test.

#### 4. Discussion

Taken together, the results presented herein demonstrated that the FetMP-Fls system of pUO-StVR2 is involved in iron uptake and confers benefits to bacteria both under culture and infective conditions. This conclusion is based on three observations: i) when iron was restricted, deletion of the *fetMP-flsDA* genes was detrimental to growth and the wild-type strain fully outcompeted the deletion mutant

strain; ii) the intracellular iron concentration was five times higher in the presence than in the absence of these genes; and iii) their loss compromised the infection of mammalian host cells by *Salmonella*.

While previous studies shed light on the role of the FetM and FetP proteins in iron uptake, the function of the Fls proteins remains to be established. In the uropathogenic F11 strain of *E. coli*, a mutant deficient in most iron transport systems was used to investigate the role of FetM and FetP [27]. Deletion of *fetM* in this genetic background impaired iron acquisition, whereas *fetP* proved to be dispensable, although required for optimal growth at low  $\text{Fe}^{2+}$  concentrations and also in the presence of  $\text{Fe}^{3+}$ . Koch et al. [27] proposed that FetM acts as a functional  $\text{Fe}^{2+}$  transporter and attributed to FetP a dual role as a periplasmic  $\text{Fe}^{2+}$  binding protein and as a  $\text{Fe}^{3+}$  reductase. In the present study, growth experiments were performed with decreasing concentrations of  $\text{FeCl}_3$ . However, as suggested for the FetMP system of *E. coli* F11 [27], a nearly identical system to the FetMP system of *S. Typhimurium* LSP 146/02, the latter may be equally able to use both oxidative states of iron with or without the cooperation of FetP.

In contrast to *E. coli*, the *fetP* gene of *Y. pestis*, but not *fepM*, was required for optimal growth under iron limitation [29]. This was also the case for the *fetP* homolog of *C. jejuni* 81-176, termed p19, but the possible involvement of *fetM* in iron uptake was not investigated in the latter bacterium [28]. Like in *E. coli*, experiments in *Y. pestis* were performed with a mutant lacking other iron acquisition systems. In contrast, many other systems were present in the  $\Delta$ p19 ( $\Delta$ *fetP*) mutant of *C. jejuni* as well as in the  $\Delta$ *fetMP-flsDA* derivative of LSP 146/02 according to an in silico analysis. Therefore, the benefits associated with the FetMP-Fls system of LSP 146/02, and also with the *fetMP-flsDA* genes once transferred into *S. Typhimurium* ATCC 14028, appear to exceed those conferred by the many other iron uptake systems found in the two strains. The predominant role of FetMP-Fls as an iron scavenger is also supported by the more than 5-fold increase in the intracellular iron content in LSP 146/02 versus the isogenic  $\Delta$ *fetMP-flsDA* derivative under iron-restricted conditions. It has been reported that catecholamine dopamine promotes growth of *S. Typhimurium* both in culture and within bone marrow-derived macrophages, which depends on an increased iron uptake [43]. Dopamine achieves this by at least two mechanisms: i) acting as a pseudo-siderophore that binds iron directly, and ii) increasing the expression of iron uptake genes, particularly *sitABCD* [43]. Similarly, although the existence of a new regulatory mechanism hindering the expression of other iron uptake systems cannot be disregarded, the enhanced iron availability might be enough to account for the selective advantages conferred by an additional FetMP-Fls system to *S. Typhimurium*.

Surprisingly, the  $\Delta$ *fetMP-flsDA* strain grew worse than the wild-type LSP 146/02 strain even in the presence of ample iron (i.e., in an LB broth without 2,2'-dipyridyl as well as in a PCN medium containing  $\text{FeCl}_3$  100  $\mu\text{M}$ ). This suggests that the FetMP-Fls system provides further benefit(s) to the host strain in addition to iron acquisition. They cannot be caused by an enhanced uptake of zinc and manganese, since no significant differences were observed in the intracellular concentrations of these elements between the mutant and the wild-type strain. However, the involvement of the FetMP-Fls system in enhanced transport of other metals cannot be ruled out, particularly since the role of the FlsABC transporter remains unknown.

Although some information is available on the impact of FetMP-Fls-like systems during growth of bacterial pathogens under iron-restrictive culture conditions, their role under infective conditions has not been investigated, until now. Epithelial cells and macrophages are commonly used in virulence studies of facultative intracellular pathogens like *S. enterica*, which can invade, survive, and replicate within host cells [44]. In the present study, the effect of deletion of *fetMP-flsDA* on replication of *S. Typhimurium* LSP 146/02 inside HeLa cells was not determined, but the absence of the iron uptake system negatively affected the process of invasion. Deletion of the system also resulted in decreased bacterial replication within RAW264.7 macrophages, consistent with the notion that iron is limited in both cell types and with its efficient acquisition by the bacterial FetMP-Fls system. Boyer et al. [17] investigated the role of the Feo, Sit, and MntH proteins using mutants of a clinical strain of *S. Typhimurium* lacking either one, two, or all three systems and found that Sit was required for

replication inside RAW264.7 cells. However, these experiments were performed with macrophages treated with IFN- $\gamma$ , and even though the differences were detected only after addition of 2,2'-dipyridyl, which can permeate the macrophage membrane and sequester the intracellular Fe<sup>2+</sup> [17]. In the present study, a significant reduction in replication of the  $\Delta$ *fetMP-flsDA* strain with respect to the wild-type strain was observed, although RAW264.7 macrophages (Nramp1<sup>-/-</sup>) are not particularly efficient in withholding intracellular metals from pathogens, and they were not treated with IFN- $\gamma$  or 2,2'-dipyridyl. A significantly higher replication rate was also observed for ATCC 14028 harboring the *fetMP-flsDA* genes, in agreement with enhanced iron acquisition by the FetMP-Fls system.

## 5. Conclusions

The present study reveals the great importance of the FetMP-Fls system in iron acquisition by *S. Typhimurium* LSP 146/02 and ATCC 14028, addressing for the first time the role of one of these systems during infection of epithelial and phagocytic host cells. As it was proposed for the uropathogenic *E. coli* F11 strain [36], the versatility of the FetMP proteins connected with the ability to use both Fe<sup>2+</sup> and Fe<sup>3+</sup> would represent an important advantage with respect to the systems specialized on the uptake of just one of the two oxidation states. Accordingly, the highly efficient FetMP-Fls system together with the multiple resistance genes harbored by pUO-StVR2 may have greatly contributed to the successful dissemination of *S. Typhimurium* isolates carrying the plasmid.

**Supplementary Materials:** The following are available online at <http://www.mdpi.com/2076-2607/8/5/630/s1>, Table S1. Primers used in this study; Table S2. Genes associated with iron acquisition found in the genome of *Salmonella enterica* serovar Typhimurium LSP 146/02; Table S3. Comparison of iron acquisition regions found in the genomes of *Salmonella enterica* serovar Typhimurium LSP 146/02, ATCC 14028, and LT2; Table S4. Homologs of the FetMP-Fls system of *Salmonella enterica* serovar Typhimurium LSP 146/02.

**Author Contributions:** Conceptualization, M.H. and M.R.R.; validation, V.G., R.R., and M.R.R.; formal Analysis, V.G., A.H.-F., R.R., and M.R.R.; investigation, V.G., R.R., and I.M.; resources, J.E.O., M.H., and M.R.R.; data curation, V.G. and M.R.R.; writing—original draft preparation, V.G., R.R., and M.R.R.; writing—review and editing, V.G., A.F.-L., A.H.-F., I.M., R.R., J.E.O., M.H., and M.R.R.; visualization, V.G., A.F.-L., A.H.-F., R.R., and M.R.R.; supervision, A.F.-L., J.E.O., M.H., and M.R.R.; project administration, M.H. and M.R.R.; funding acquisition, M.H. and M.R.R. All authors have read and agreed to the published version of the manuscript.

**Funding:** This work was supported by the Fondo de Investigación Sanitaria, Instituto de Salud Carlos III, Ministerio de Economía y Competitividad, Spain, co-funded by the European Regional Development Fund of the European Union: a way to making Europe, FIS projects PI11-00808 and PI7-00474 (granted to M.R.R.), and by the DFT (Deutsche Forschungsgemeinschaft) through SFB944, Projects P4 and P15 (granted to M.H.). Work in Osnabrück was partially supported by a research collaboration in the frame of the IPID (International Promovieren In Deutschlandnetwork) of the DAAD (Deutscher Akademischer Austauschdienst, covering travel and expenses of V.G. and N.M.A.F.-L. was a recipient of a DAAD research fellowship (A0773175).

**Acknowledgments:** The authors are grateful to Benoît Doublet (INRA, UR1282, Infectiologie Animale et Santé Publique, Nouzilly, France) for kindly providing plasmids pKD46-Gm and pCP20-Gm, to Annabella Meana del Soto (Unidad Espectrometría de Masas, Servicios Científico Técnicos, Universidad de Oviedo, Spain) for excellent technical assistance, and to Jürgen Heinisch (Department of Biology and Chemistry, Genetics Group, University of Osnabrück, Germany) for critical reading of the manuscript and constructive suggestions. V.G. acknowledges the Consellería de Cultura, Educación e Ordenación Universitaria, Xunta de Galicia, for her post-doctoral grant (grant number ED481B-2018/018).

**Conflicts of Interest:** The authors declare no conflict of interest.

## References

1. Majowicz, S.E.; Musto, J.; Scallan, E.; Angulo, F.J.; Kirk, M.; O'Brien, S.J.; Jones, T.F.; Fazil, A.; Hoekstra, R.M. International Collaboration on Enteric Disease "Burden of Illness" Studies. The global burden of nontyphoidal *Salmonella* gastroenteritis. *Clin. Infect. Dis.* **2010**, *50*, 882–889. [[CrossRef](#)] [[PubMed](#)]
2. Andrews, S.C.; Robinson, A.K.; Rodríguez-Quinones, F. Bacterial iron homeostasis. *FEMS Microbiol. Rev.* **2003**, *27*, 215–237. [[CrossRef](#)]
3. Kortman, G.A.; Roelofs, R.W.; Swinkels, D.W.; de Jonge, M.I.; Burt, S.A.; Tjalsma, H. Iron-induced virulence of *Salmonella enterica* serovar Typhimurium at the intestinal epithelial interface can be suppressed by carvacrol. *Antimicrob. Agents Chemother.* **2014**, *58*, 1664–1670. [[CrossRef](#)] [[PubMed](#)]

4. Braun, V. Regulation of iron uptake minimizes iron-mediated oxidative stress. *J. Biosci.* **1998**, *23*, 483–489. [[CrossRef](#)]
5. Ratledge, C.; Dover, L.G. Iron metabolism in pathogenic bacteria. *Annu. Rev. Microbiol.* **2000**, *54*, 881–941. [[CrossRef](#)] [[PubMed](#)]
6. Weinberg, E.D. Iron and susceptibility to infectious disease. *Science* **1974**, *184*, 952–956. [[CrossRef](#)]
7. Kingsley, R.A. Iron Uptake and Metabolism by *Salmonella enterica*. Ph.D. Thesis, University of Leicester, Leicester, UK, 1997.
8. Pollack, J.R.; Neilands, J.B. Enterobactin, an iron transport compound from *Salmonella typhimurium*. *Biochem. Biophys. Res. Commun.* **1970**, *38*, 989–992. [[CrossRef](#)]
9. Raymond, K.N.; Dertz, E.A.; Kim, S.S. Enterobactin: An archetype for microbial iron transport. *Proc. Natl. Acad. Sci. USA* **2003**, *100*, 3584–3588. [[CrossRef](#)]
10. Bäumlér, A.J.; Tsolis, R.M.; van der Velden, A.W.; Stojilkovic, I.; Anic, S.; Heffron, F. Identification of a new iron regulated locus of *Salmonella typhi*. *Gene* **1996**, *183*, 207–213. [[CrossRef](#)]
11. Müller, S.I.; Valdebenito, M.; Hantke, K. Salmochelin, the long-overlooked catecholate siderophore of *Salmonella*. *Biometals* **2009**, *22*, 691–695. [[CrossRef](#)]
12. Raffatellu, M.; George, M.D.; Akiyama, Y.; Hornsby, M.J.; Nuccio, S.P.; Paixao, T.A.; Butler, B.P.; Chu, H.; Santos, R.L.; Berger, T.; et al. Lipocalin-2 resistance confers an advantage to *Salmonella enterica* serotype Typhimurium for growth and survival in the inflamed intestine. *Cell Host Microbe* **2009**, *5*, 476–486.
13. Kingsley, R.; Rabsch, W.; Stephens, P.; Roberts, M.; Reissbrodt, R.; Williams, P.H. Iron supplying systems of *Salmonella* in diagnostics, epidemiology and infection. *FEMS Immunol. Med. Microbiol.* **1995**, *11*, 257–264. [[CrossRef](#)] [[PubMed](#)]
14. Luckey, M.; Pollack, J.R.; Wayne, R.; Ames, B.N.; Neilands, J.B. Iron uptake in *Salmonella typhimurium*: Utilization of exogenous siderochromes as iron carriers. *J. Bacteriol.* **1972**, *111*, 731–738. [[CrossRef](#)] [[PubMed](#)]
15. Cartron, M.L.; Maddocks, S.; Gillingham, P.; Craven, C.J.; Andrews, S.C. Feo-transport of ferrous iron into bacteria. *Biometals* **2006**, *19*, 143–157. [[CrossRef](#)] [[PubMed](#)]
16. Janakiraman, A.; Slauch, J.M. The putative iron transport system SitABCD encoded on SPI1 is required for full virulence of *Salmonella typhimurium*. *Mol. Microbiol.* **2000**, *35*, 1146–1155. [[CrossRef](#)]
17. Boyer, E.; Bergevin, I.; Malo, D.; Gros, P.; Cellier, M.F. Acquisition of Mn(II) in addition to Fe(II) is required for full virulence of *Salmonella enterica* serovar Typhimurium. *Infect. Immun.* **2002**, *70*, 6032–6042. [[CrossRef](#)]
18. Herrero, A.; Rodicio, M.R.; González-Hevia, M.A.; Mendoza, M.C. Molecular epidemiology of emergent multidrug-resistant *Salmonella enterica* serotype Typhimurium strains carrying the virulence resistance plasmid pUO-StVR2. *J. Antimicrob. Chemother.* **2006**, *57*, 39–45. [[CrossRef](#)]
19. Herrero, A.; Rodicio, M.R.; Echeita, M.A.; Mendoza, M.C. *Salmonella enterica* serotype Typhimurium carrying hybrid virulence-resistance plasmids (pUO-StVR): A new multidrug-resistant group endemic in Spain. *Int. J. Med. Microbiol.* **2008**, *298*, 253–261. [[CrossRef](#)]
20. Antunes, P.; Machado, J.; Sousa, J.C.; Peixe, L. Dissemination amongst humans and food products of animal origin of a *Salmonella typhimurium* clone expressing an integron-borne OXA-30 beta-lactamase. *J. Antimicrob. Chemother.* **2004**, *54*, 429–434. [[CrossRef](#)]
21. Herrero, A.; Mendoza, M.C.; Threlfall, E.J.; Rodicio, M.R. Detection of *Salmonella enterica* serovar Typhimurium with pUO-StVR2-like virulence-resistance hybrid plasmids in the United Kingdom. *Eur. J. Clin. Microbiol. Infect. Dis.* **2009**, *28*, 1087–1093. [[CrossRef](#)]
22. Beutlich, J.; Rodicio, M.R.; Mendoza, M.C.; García, P.; Kirchner, M.; Luzzi, I.; Mevius, D.; Threlfall, J.; Helmuth, R.; Guerra, B. Med-Vet-Net WP21 Project Group. *Salmonella enterica* serovar Typhimurium virulence-resistance plasmids derived from the pSLT carrying nonconventional class 1 integrons with *dfrA12* gene in their variable region and *sul3* in the 3' conserved segment. *Microb. Drug Resist.* **2013**, *19*, 437–445. [[PubMed](#)]
23. Carpenter, C.; Payne, S.M. Regulation of iron transport systems in *Enterobacteriaceae* in response to oxygen and iron availability. *J. Inorg. Biochem.* **2014**, *133*, 110–117. [[CrossRef](#)] [[PubMed](#)]
24. Herrero, A.; Mendoza, M.C.; Rodicio, R.; Rodicio, M.R. Characterization of pUO-StVR2, a virulence-resistance plasmid evolved from the pSLT virulence plasmid of *Salmonella enterica* serovar Typhimurium. *Antimicrob. Agents Chemother.* **2008**, *52*, 4514–4517. [[CrossRef](#)] [[PubMed](#)]
25. Izumiya, H.; Sekizuka, T.; Nakaya, H.; Taguchi, M.; Oguchi, A.; Ichikawa, N.; Nishiko, R.; Yamazaki, S.; Fujita, N.; Watanabe, H.; et al. Whole-genome analysis of *Salmonella enterica* serovar Typhimurium T000240 reveals the acquisition of a genomic island involved in multidrug resistance via IS1 derivatives on the chromosome. *Antimicrob. Agents Chemother.* **2011**, *55*, 623–630. [[CrossRef](#)]

26. Liu, M.M.; Boinett, C.J.; Chan, A.C.K.; Parkhill, J.; Murphy, M.E.P.; Gaynor, E.C. Investigating the *Campylobacter jejuni* transcriptional response to host intestinal extracts reveals the involvement of a widely conserved iron uptake system. *MBio* **2018**, *9*, e01347-18. [[CrossRef](#)]
27. Koch, D.; Chan, A.C.; Murphy, M.E.; Lilie, H.; Grass, G.; Nies, D.H. Characterization of a dipartite iron uptake system from uropathogenic *Escherichia coli* strain F11. *J. Biol. Chem.* **2011**, *286*, 25317–25330. [[CrossRef](#)]
28. Chan, A.C.; Doukov, T.I.; Scofield, M.; Tom-Yew, S.A.; Ramin, A.B.; Mackichan, J.K.; Gaynor, E.C.; Murphy, M.E. Structure and function of P19, a high-affinity iron transporter of the human pathogen *Campylobacter jejuni*. *J. Mol. Biol.* **2010**, *401*, 590–604. [[CrossRef](#)]
29. Fetherston, J.D.; Mier, I.; Truszczynska, H.; Perry, R.D. The Yfe and Feo transporters are involved in microaerobic growth and virulence of *Yersinia pestis* in bubonic plague. *Infect. Immun.* **2012**, *80*, 3880–3891. [[CrossRef](#)]
30. Gerlach, R.G.; Cláudio, N.; Rohde, M.; Jäckel, D.; Wagner, C.; Hensel, M. Cooperation of *Salmonella* pathogenicity islands 1 and 4 is required to breach epithelial barriers. *Cell. Microbiol.* **2008**, *10*, 2364–2376. [[CrossRef](#)]
31. Shea, J.E.; Hensel, M.; Gleeson, C.; Holden, D.W. Identification of a virulence locus encoding a second type III secretion system in *Salmonella typhimurium*. *Proc. Natl. Acad. Sci. USA* **1996**, *93*, 2593–2597. [[CrossRef](#)]
32. Taylor, R.G.; Walker, D.C.; McInnes, R.R. *E. coli* host strains significantly affect the quality of small scale plasmid DNA preparations used for sequencing. *Nucleic Acids Res.* **1993**, *21*, 1677–1678. [[CrossRef](#)] [[PubMed](#)]
33. Altschul, S.F.; Madden, T.L.; Schäffer, A.A.; Zhang, J.; Zhang, Z.; Miller, W.; Lipman, D.J. Gapped BLAST and PSI-BLAST: A new generation of protein database search programs. *Nucleic Acids Res.* **1997**, *25*, 3389–3402. [[CrossRef](#)] [[PubMed](#)]
34. Datsenko, K.A.; Wanner, B.L. One-step inactivation of chromosomal genes in *Escherichia coli* K-12 using PCR products. *Proc. Natl. Acad. Sci. USA* **2000**, *97*, 6640–6645. [[CrossRef](#)] [[PubMed](#)]
35. Doublet, B.; Douard, G.; Targant, H.; Meunier, D.; Madec, J.Y.; Cloeckert, A. Antibiotic marker modifications of lambda Red and FLP helper plasmids, pKD46 and pCP20, for inactivation of chromosomal genes using PCR products in multidrug-resistant strains. *J. Microbiol. Methods* **2008**, *75*, 359–361. [[CrossRef](#)]
36. Deiwick, J.; Nikolaus, T.; Erdogan, S.; Hensel, M. Environmental regulation of *Salmonella* pathogenicity island 2 gene expression. *Mol. Microbiol.* **1999**, *31*, 1759–1773. [[CrossRef](#)]
37. Hassan, K.A.; Pederick, V.G.; Elbourne, L.D.; Paulsen, I.T.; Paton, J.C.; McDevitt, C.A.; Eijkelkamp, B.A. Zinc stress induces copper depletion in *Acinetobacter baumannii*. *BMC Microbiol.* **2017**, *17*, 59. [[CrossRef](#)]
38. Kasahara, M.; Nakata, A.; Shinagawa, H. Molecular analysis of the *Salmonella typhimurium* *phoN* gene, which encodes nonspecific acid phosphatase. *J. Bacteriol.* **1991**, *173*, 6760–6765. [[CrossRef](#)]
39. García, P.; Guerra, B.; Bances, M.; Mendoza, M.C.; Rodicio, M.R. IncA/C plasmids mediate antimicrobial resistance linked to virulence genes in the Spanish clone of the emerging *Salmonella enterica* serotype 4,[5],12:i. *J. Antimicrob. Chemother.* **2011**, *66*, 543–549. [[CrossRef](#)]
40. Wang, R.F.; Kushner, S.R. Construction of versatile low-copy-number vectors for cloning, sequencing and gene expression in *Escherichia coli*. *Gene* **1991**, *100*, 195–199. [[CrossRef](#)]
41. Sambrook, J.; Russell, D.W. *Molecular Cloning: A Laboratory Manual*, 3rd ed.; Cold Spring Harbor Laboratory: New York, NY, USA, 2001.
42. Porcheron, G.; Garénaux, A.; Proulx, J.; Sabri, M.; Dozois, C.M. Iron, copper, zinc, and manganese transport and regulation in pathogenic Enterobacteria: Correlations between strains, site of infection and the relative importance of the different metal transport systems for virulence. *Front. Cell. Infect. Microbiol.* **2013**, *3*, 90. [[CrossRef](#)]
43. Dichtl, S.; Demetz, E.; Haschka, D.; Tymoszuk, P.; Petzer, V.; Nairz, M.; Seifert, M.; Hoffmann, A.; Brigo, N.; Würzner, R.; et al. Dopamine is a siderophore-like iron chelator that promotes *Salmonella enterica* serovar Typhimurium virulence in mice. *mBio* **2019**, *10*, e02624-18. [[CrossRef](#)] [[PubMed](#)]
44. Hurley, D.; McCusker, M.P.; Fanning, S.; Martins, M. *Salmonella*-host interactions—Modulation of the host innate immune system. *Front. Immunol.* **2014**, *5*, 481. [[PubMed](#)]

